

The Jockey Club CPS Limited

Central Police Station Conservation
and Revitalisation Project:
*Twenty-fourth Monthly EM&A
Report*
(1 October to 31 October 2013)

Issue Date: November 2013

Environmental Resources Management

16/F

DCH Commercial Centre
25 Westlands Road
Quarry Bay, Hong Kong
Telephone: (852) 2271 3000
Facsimile: (852) 2723 5660
E-mail: post.hk@erm.com
<http://www.erm.com>

The Jockey Club CPS Limited

Central Police Station Conservation
and Revitalisation Project:
*Twenty-fourth Monthly EM&A
Report*
(From 1 October to 31 October 2013)

Issue Date: November 2013

Reference 0095646

For and on behalf of	
ERM-Hong Kong, Limited	
Approved by:	Frank Wan
Signed:	
Position:	Partner
Certified by:	
	(Environmental Team Leader – Winnie Ko)
Date:	12 November 2013

This report has been prepared by ERM-Hong Kong, Limited with all reasonable skill, care and diligence within the terms of the Contract with the client, incorporating our General Terms and Conditions of Business and taking account of the resources devoted to it by agreement with the client.

We disclaim any responsibility to the client and others in respect of any matters outside the scope of the above.

This report is confidential to the client and we accept no responsibility of whatsoever nature to third parties to whom this report, or any part thereof, is made known. Any such party relies on the report at their own risk.

Your ref. 0095646_let_Atkins_20131114 Monthly EM&A Report No.24.doc
Our ref. 4690/OC051/SO

Telephone (852) 2972 1000
Facsimile (852) 2890 6343

info.hk@atkinsglobal.com
www.atkinsglobal.com

Date: 14 November 2013

By Email and Post

ERM-Hong Kong Limited,
16/F DCH Commercial Centre,
25 Westlands Road,
Quarry Bay,
Hong Kong

Attn: Ms Winnie Ko

Dear Winnie,

Central Police Station Conservation and Revitalization Project Verification of Monthly EM&A Report No.24

We refer to your letter dated 14 November 2013 regarding the Monthly EM&A Report No.24. Atkins China Ltd. verifies, in the capacity of Independent Environmental Checker, that the report, in principle, conforms the requirements provided in Condition 3.4 of the Environmental Permit (EP-408/2011/B).

Yours sincerely,
For Atkins China Ltd.



Sharifah Or
Independent Environmental Checker

c.c. HKJC – Mr. Kenneth Lee,
Rocco Design Architect – Mr. Charles Kung,

By Email
By Email

CONTENTS

1	INTRODUCTION	1
1.1	PURPOSE OF THE REPORT	1
1.2	STRUCTURE OF THE REPORT	1
2	PROJECT INFORMATION	3
2.1	BACKGROUND	3
2.2	SITE DESCRIPTION	3
2.3	CONSTRUCTION ACTIVITIES	3
2.4	PROJECT ORGANISATION	4
2.5	STATUS OF ENVIRONMENTAL APPROVAL DOCUMENTS	4
3	ENVIRONMENTAL MONITORING REQUIREMENTS	7
3.1	NOISE MONITORING	7
3.1.1	Monitoring Location	7
3.1.2	Monitoring Parameters, Frequency and Programme	7
3.1.3	Monitoring Equipment and Methodology	7
3.1.4	Event / Action Plan	8
3.1.5	Mitigation Measures	8
3.2	CULTURAL HERITAGE	8
3.2.1	Vibration Monitoring	8
3.2.2	Mitigation Measures	9
3.3	LANDSCAPE AND VISUAL MONITORING	10
3.3.1	Mitigation Measures	10
3.4	ENVIRONMENTAL REQUIREMENTS IN CONTRACT DOCUMENTS	10
4	IMPLEMENTATION STATUS ON ENVIRONMENTAL PROTECTION REQUIREMENTS	11
5	MONITORING RESULTS	12
5.1	NOISE	12
5.2	CULTURAL HERITAGE	12
5.3	LANDSCAPE AND VISUAL	14
5.4	WASTE MANAGEMENT	14
6	ENVIRONMENTAL SITE INSPECTION	15
7	ENVIRONMENTAL NON-CONFORMANCE	16
7.1	SUMMARY OF MONITORING EXCEEDANCE	16
7.2	SUMMARY OF ENQUIRY	16
7.3	SUMMARY OF ENVIRONMENTAL NON-COMPLIANCE	16
7.4	SUMMARY OF ENVIRONMENTAL COMPLAINT	16
7.5	SUMMARY OF ENVIRONMENTAL SUMMONS AND SUCCESSFUL PROSECUTION	17

8	FUTURE KEY ISSUES	17
8.1	KEY ISSUES FOR THE COMING MONTH	17
8.2	MONITORING SCHEDULE FOR THE NEXT MONTH	17
8.3	CONSTRUCTION PROGRAMME FOR THE NEXT MONTH	17
9	CONCLUSIONS	18

LIST OF TABLES

Table 2.1	Summary of Construction Activities Undertaken from 1 October to 31 October 2013
Table 2.2	Summary of Environmental Licensing, Notification and Permit Status
Table 3.1	Construction Phase Noise Monitoring Station
Table 3.2	Noise Monitoring Equipment
Table 3.3	Action and Limit Levels for Construction Noise Monitoring
Table 3.4	Alert, Alarm and Action (AAA) Levels for Vibration Monitoring
Table 3.5	Event and Action Plan for Vibration Monitoring
Table 4.1	Status of Required Submissions
Table 5.1	Findings of Monthly Tree Inspection in the Reporting Period
Table 5.2	Quantities of Waste Generated from the Project
Table 8.1	Construction Works to be Undertaken in the Coming One Month

LIST OF ANNEXES

Annex A	Locations of Works Areas and the Surroundings
<i>Annex A1</i>	<i>Project Location</i>
<i>Annex A2</i>	<i>Declared Monuments within the Project Site</i>
<i>Annex A3</i>	<i>Site Layout Plan marked with Works</i>
Annex B	Project Organization Chart and Contact Detail
Annex C	Locations of Noise Monitoring Stations and Noise Sensitive Receivers
Annex D	Monitoring Schedule of the Reporting Month and the Next Month
Annex E	Calibration Reports for Calibrators and Sound Level Meters
Annex F	Event /Action Plans for Noise
Annex G	Summary of Implementation Status
Annex H	Noise Monitoring Results
Annex I	Construction Programme for the Project

- Annex J** **Tree Inspection Reports**
- Annex K** **Environmental Complaint, Environmental Summons and Prosecution Log**
- Annex L** **Records of Vibration Monitoring for Trial Piling and Pipe / Bored Piling Works**
- Annex M** **Records of Vibration Monitoring for Other Construction Works**

EXECUTIVE SUMMARY

The construction works of **Central Police Station Conservation and Revitalisation Project** commenced on 24 October 2011. This is the twenty-fourth monthly Environmental Monitoring and Audit (EM&A) report presenting the EM&A works carried out during the period from 1 October to 31 October 2013 in accordance with the EM&A Manual.

Summary of Construction Works undertaken during Reporting Period

The major construction works undertaken during the reporting period include:

- General strip out works at Block 19;
- Structural addition and alteration works at Block 1;
- Roof tiling replacement works at Block 1 and Block 6;
- Demolition works at Block 2, Block 3, Block 11, Block 12, Block 14, Block 15 and Block 19;
- New structure construction at Block 11 and Block 15;
- External and lateral support for cost plus at Block 10 and Block 13;
- Underpinning works at Block 1, Block 3 and Block 14;
- Demolition of slab at Block 10 and Block 13;
- E&M opening at Block 6 and Block 7;
- Revetment wall strengthening of R175 and R806;
- Basement construction at Parade Ground;
- Timber doors and windows repair works at Block 1, Block 3, Block 4, Block 6 and Block 7;
- E&M installation at Block 1;
- External scaffolding erection at Block 2, Block 4 and Block 9;
- Old Bailey Wing piling works (Block 50) and Arbuthnot Wing (Block 51) loading test preparation;
- Removal of non-structural infill wall at Block 17; and
- Old Bailey Wing pump well installation and test.

Environmental Monitoring and Audit Progress

A summary of the monitoring activities in this reporting period is listed below:

- Construction noise monitoring during normal weekdays at each monitoring station 5 times
- Joint environmental site inspection 1 time
- Heritage site inspections 20 times
- Landscape & visual monitoring 1 time
- Tree inspection 1 time

- Vibration monitoring for piling works 121 times
- Vibration monitoring for other construction works 75 times

Noise

5 sets of 30-minute construction noise measurements were carried out at each of the monitoring stations (NM2 and NM6) during normal weekdays of the reporting period. No exceedance of Action or Limit Level of construction noise was recorded during the reporting period.

Cultural Heritage

Vibration monitoring carried out for the trial piling and piling works during the reporting period are listed below:

- 25 vibration monitoring measurements for the construction of the pipe pile walls at Parade Ground;
- 25 vibration monitoring measurements at Block 8;
- 25 vibration monitoring measurements for the construction of pipe pile walls at Old Bailey Wing (Block 50);
- 25 vibration monitoring measurements for the shaft grouted pre-bored H-piles at Block 51; and
- 21 vibration monitoring measurements at Block 17.

Vibration monitoring carried out for other construction works during the reporting period are listed below:

- 25 vibration monitoring measurements for the structural addition and alteration works at Block 1;
- 25 vibration monitoring measurements for the structural addition and alteration works at Block 14.
- 25 vibration monitoring measurements for the structural addition and alteration works at Block 11.

No exceedance of the Alert, Alarm and Action Levels was recorded during the reporting period.

Heritage site audits were conducted on 2, 3, 4, 8, 9, 10, 11, 15, 16, 17, 18, 21, 22, 23, 24, 25, 28, 29, 30 and 31 October 2013 by the Heritage Checker during the reporting period. Major observations and recommendations during the site inspections were listed below:

8 October 2013

- It was noticed that mark-up of openings in Building 2 were mostly incorrect or missing.

10 October 2013

- Cigarette buds were observed in one of the paint pots on the first floor of Building 1.

16 October 2013

- It was observed that scaffold components were placed on the unprotected timber floor boards on second floor of Building 4 and second floor of Building 3.

17 October 2013

- It was observed that scaffold components were placed on the unprotected timber floor boards on second floor of Building 4.

The Contractor was urged to follow-up the necessary rectification based on the inspection findings.

The follow-up actions recommended in the heritage site audits from the last reporting period (September 2013) have generally been implemented.

Landscape & Visual

Landscape and visual monitoring has commenced since October 2011 on a monthly basis. Tree inspection was conducted on 2 October 2013 by the arborist during the reporting period. No further action is required or recommended from the arborist during the tree inspection.

Waste Management

Wastes generated from this Project include inert construction and demolition (C&D) materials and non-inert C&D materials. A total of 2,170.54 tonnes of inert C&D materials were generated during the reporting period. 157.48 tonnes of non-inert C&D materials comprising general refuse were generated and disposed of at the SENT Landfill. 3,120 kg of metal was produced and sent to recyclers for recycling. No plastic waste or paper/cardboard packaging was generated during the reporting period. 135 kg of solid chemical waste was produced and collected by licensed chemical waste collector during the reporting period.

Environmental Site Inspection

A joint environmental site inspection was carried out by the representatives of the Contractor, the IEC and the ET on 17 October 2013. There is no major observation or recommendation during the site audit.

Environmental Exceedance/Non-conformance/Compliant/Summons and Prosecution

No exceedance of Action or Limit Level of construction noise was recorded at designated monitoring stations during the reporting period.

No exceedance of the Alert, Alarm and Action Levels of vibration was recorded during the reporting period.

No enquiry was received during the reporting period.

No non-compliance event was recorded during the reporting period.

No complaint was received during the reporting period.

No summons/prosecution was received during the reporting period.

Future Key Issues

Works to be undertaken in the next month include:

- General strip out works at Block 15 and Block 19;
- Structural addition and alteration works at Block 1, Block 11, Block 12, Block 14, Block 15 and Block 19;
- Roof tiles replacement works at Block 1 and Block 6;
- Demolition works to Block 2, Block 3, Block 4, Block 9, Block 10, Block 11, Block 12, Block 13, Block 14, Block 15 and Block 19;
- Underpinning works of Block 1, Block 3 and Block 14;
- Channel planking work at Block 19;
- E&M opening at Block 6 and Block 7;
- Excavation and construction of ground beam at Block 17;
- Basement construction at Parade Ground;
- Timber doors and windows repair works at Block 1, Block 3, Block 4, Block 6 and Block 7;
- E&M installation at Block 1;
- External scaffolding erection at Block 2, Block 4 and Block 9;
- Old Bailey Wing (Block 50) piling works and Arbuthnot Wing (Block 51) loading test preparation;
- Excavation and lateral support at Arbuthnot Wing;
- Old Bailey Wing pump well test; and
- Revetment wall strengthening of R175 and R806.

Potential environmental impacts arising from the above construction activities are mainly associated with dust, construction noise, site runoff and waste management.

ERM-Hong Kong, Limited (ERM) was appointed by the Jockey Club CPS Limited (the CPS Ltd) as the Environmental Team (ET) to undertake the Environmental Monitoring and Audit (EM&A) programme for the **Central Police Station Conservation and Revitalisation Project** (the Project).

1.1 PURPOSE OF THE REPORT

This is the twenty-fourth EM&A report which summarises the impact monitoring results and audit findings for the EM&A programme during the reporting period from **1 October to 31 October 2013**.

1.2 STRUCTURE OF THE REPORT

The structure of the report is as follows:

Section 1 : Introduction

details the scope and structure of the report.

Section 2 : Project Information

summarises background and scope of the Project, site description, project organization and contact details, construction programme, the construction works undertaken and the status of Environmental Permit(s)/License(s) during the reporting period.

Section 3 : Environmental Monitoring Requirements

summarises the monitoring parameters, monitoring programmes, monitoring methodologies, monitoring frequency, monitoring locations, Action and Limit Levels, Event/ Action Plans, environmental mitigation measures as recommended in the EIA report and relevant environmental requirements.

Section 4 : Implementation Status on Environmental Protection Requirements

summarises the implementation of environmental protection measures during the reporting period.

Section 5 : Monitoring Results

summarises the monitoring results obtained in the reporting period.

Section 6 : Environmental Site Inspection

summarises the audit findings of the site inspections undertaken within the reporting period.

Section 7: **Environmental Non-conformance**

summarises any monitoring exceedance, environmental complaints and environmental summons within the reporting period.

Section 8: **Future Key Issues**

summarises the impact forecast and monitoring schedule for the next reporting month.

Section 9: **Conclusions**

2 PROJECT INFORMATION

2.1 BACKGROUND

The Chief Executive (CE)'s 2007-2008 Policy Address highlighted revitalisation as the guiding principle of heritage conservation and the Project was one of the specific proposals put forward by the CE in the same Policy Address. At the meeting of the Executive Council (ExCo) on 15 July 2008, the ExCo advised and the CE ordered that Government should enter into a partnership with the Hong Kong Jockey Club (HKJC) in the form of an agreement (or agreements) to take forward the conservation and revitalisation of the CPS project based on various guiding parameters. The Project is now being undertaken in partnership with the Development Bureau of the HKSAR Government. The HKJC has taken on board the decision at the ExCo meeting and further investigated the design and implementation of the Project. The Project is now implemented by the Jockey Club CPS Limited.

2.2 SITE DESCRIPTION

The location of the Project Site is shown in *Annex A1*. The Site is bounded by Hollywood Road to the north, Arbuthnot Road to the east, Chancery Lane to the south and Old Bailey Street to the west.

The Site comprises three Declared Monuments designated under the *Antiquities and Monuments Ordinance* in 1995. They are:

- Central Police Station;
- Former Central Magistracy; and
- Victoria Prison Compound.

They are collectively named the Central Police Station (CPS). *Annex A2* shows the location of the Declared Monuments within CPS and the buildings within the CPS.

2.3 CONSTRUCTION ACTIVITIES

A summary of the major construction activities undertaken in this reporting period is shown in *Table 2.1* and illustrated in *Annex A3*.

Table 2.1 *Summary of Construction Activities Undertaken from 1 October to 31 October 2013*

Construction Activities Undertaken
• General strip out works at Block 19;
• Structural addition and alteration works at Block 1;
• Roof tiling replacement works at Block 1 and Block 6;
• Demolition works at Block 2, Block 3, Block 11, Block 12, Block 14, Block 15 and Block 19;
• New structure construction at Block 11 and Block 15;
• External and lateral support for cost plus at Block 10 and Block 13;
• Underpinning works at Block 1, Block 3 and Block 14;
• Demolition of slab at Block 10 and Block 13;
• E&M opening at Block 6 and Block 7;
• Revetment wall strengthening of R175 and R806;
• Basement construction at Parade Ground;
• Timber doors and windows repair works at Block 1, Block 3, Block 4, Block 6 and Block 7;
• E&M installation at Block 1;
• External scaffolding erection at Block 2, Block 4 and Block 9;
• Old Bailey Wing piling works (Block 50) and Arbuthnot Wing (Block 51) loading test preparation;
• Removal of non-structural infill wall at Block 17; and
• Old Bailey Wing pump well installation and test.

2.4 *PROJECT ORGANISATION*

The Project organisation chart and contact details are shown in *Annex B*.

2.5 *STATUS OF ENVIRONMENTAL APPROVAL DOCUMENTS*

A summary of the relevant permits, licences, and/or notifications on environmental protection for this Project since the granting of the EP in April 2011 is presented in *Table 2.2*.

Table 2.2 *Summary of Environmental Licensing, Notification and Permit Status*

Permit/ Licences/ Notification	Reference	Validity Period	Remarks
Environmental Permit (EP)	EP-408/2011	-	Superseded on 10 January 2012
	EP-408/2011/A	-	Superseded on 22 March 2012
	EP-408/2011/B	Throughout the Contract	Permit granted on 22 March 2012
Notification of Construction Works as required under <i>Air Pollution Control (Construction Dust)</i>	Ref. No. 332920	Throughout the Contract	-

<i>Regulation</i>			
Registration of Waste Producer under <i>Waste Disposal Ordinance</i>	Waste Producer No.: 5213-122-G2347-25	Throughout the Contract	-
Effluent Discharge License under <i>Water Pollution Control Ordinance</i>	License No. WT00010633-2011	21 Oct 2011 – 31 Oct 2016	-
Notification of Commencement of Asbestos Abatement Work under <i>Air Pollution Control Ordinance</i>	-	Throughout the Contract	EPD's letter (EPD's ref.: (5) in EPAC/A/4/000/23 3 II) dated 2 December 2011 satisfied that the content of the asbestos abatement plan (Report No.: 0210/11/ED/0078A) is in accordance with the APCO
Approval of Asbestos Abatement Work (Phase 2)	-	Earliest commencement date on 26 January 2012	EPD's letter (EPD's ref.:() in EPAC/A/4/000/23 3) dated 18 January 2012.
Construction Noise Permit (CNP)	GW-RS0734-12	11 July 2012 at 0200 hours to 2 August 2012 at 0400 hours	Expired.
	GW-RS0839-12	13 August 2012 at 1900 hours to 31 December 2012 at 0700 hours	Expired.
	GW-RS1162-12	1 December 2012 at 0000 hours to 28 March 2013 at 0600 hours	Expired.
	GW-RS0113-13	1 February 2013 at 0200 hours to 31 May 2013 at 0400 hours	Expired.
	GW-RS1301-12	2 January 2013 at 1900 hours to 29 June 2013 at 2300 hours	Expired.
	GW-RS0084-13	24 January 2013 at 1900 hours to 29 June 2013 at 0700 hours	Expired.
	GW-RS0638-13	16 June 2013 at 0700 hours to 15 September 2013 at 1900 hours	Expired.
	GW-RS0901-13	14 August 2013 at 0000 hours to 31 October 2013 at 0600 hours	Expired.

GW-RS0714-13	29 June 2013 at 1900 hours to 28 December 2013 at 2400 hours	-
GW-RS0745-13	5 July 2013 at 1900 hours to 30 December 2013 at 2300 hours	-
GW-RS1110-13	7 October 2013 at 0200 hours to 31 December 2013 at 0400 hours	-

3.1 NOISE MONITORING

3.1.1 Monitoring Location

The construction noise monitoring locations are listed in *Table 3.1* and are shown in *Annex C*.

Table 3.1 Construction Phase Noise Monitoring Station

Monitoring Location	Proposed Construction Noise Monitoring Station			
	ID in EM&A Manual	ID	Type of Measurement	Remark
Rooftop of Ho Fook Building	N2	NM2	Façade	-
Rooftop of Chancery Mansion	---	NM6	Façade	Accesses to the original proposed monitoring location in the EM&A Manual, Chancery House (N5), were denied; alternative location of Chancery Mansion (N6), were therefore proposed and approved by the Authorised Person (AP), the Independent Environmental Checker (IEC) and EPD.

The noise sensitive receivers are also shown in *Annex C*.

3.1.2 Monitoring Parameters, Frequency and Programme

Weekly construction noise monitoring was conducted in accordance with the requirements stipulated in the EM&A Manual. The monitoring programme for this reporting period is shown in *Annex D*.

The construction noise levels were measured in terms of A-weighted equivalent continuous sound pressure level (L_{eq}) in decibels dB(A). $L_{eq(30min)}$ were used as the monitoring parameter for the time period in between 0700 – 1900 hours on normal weekdays. Supplementary information for data auditing, two statistical sound levels L_{10} and L_{90} - the levels exceeded for 10 and 90 percent of the time respectively, were also recorded during the monitoring for reference. The measured noise levels were logged in every 5 minutes throughout the impact monitoring period.

3.1.3 Monitoring Equipment and Methodology

Construction noise measurements were conducted in accordance with the calibration and measurement procedures as stated in *Annex – General Calibration and Measurement Procedures of Technical Memorandum on Noise from Construction Work other than Percussive Piling (GW-TM)* issued under the *Noise Control Ordinance (NCO)* (Cap 400).

The sound level meters and calibrator used for the noise measurement, as listed in *Table 3.2*, complies with the IEC 651: 1979 and 804:1985 (Type 1) specifications. The calibration certificates of the sound level meters are appended in *Annex E*.

Table 3.2 *Noise Monitoring Equipment*

Monitoring Stations	Monitoring Equipment (Sound Level Meter and Calibrator)
NM2, NM6	<u>Calibrator</u> Rion NC-73 (S/N 10786708) <u>Sound Level Meter</u> Rion NL-31 (S/N 00410224)

Immediately prior to and following the noise measurements, the accuracy of the measurement equipment was checked using an acoustic calibrator generating a known sound pressure level at a known frequency.

Measurements were accepted as the calibration level from before and after the noise measurement agree to within 1.0 dB(A).

3.1.4 *Event / Action Plan*

Table 3.3 *Action and Limit Levels for Construction Noise Monitoring*

Noise Monitoring Location	Action Level	Limit Level, $L_{eq}(30mins), dB(A)$	Remark
NM2, NM6	When one documented complaint is received from any one of the sensitive receivers	75 (note)	Applicable during 0700 – 1900 hours on normal weekdays.

Notes:

- Acceptable Noise Levels for Area Sensitivity Rating of A/B/C. Limit Level is reduced to 70dB(A) for schools and 65dB(A) during school examination periods.
- If works are to be carried out during restricted hours, the conditions stipulated in the CNP issued by the NCA have to be followed.

The Event / Action Plan (EAP) for noise monitoring is presented in *Annex F*.

3.1.5 *Mitigation Measures*

The mitigation measures in accordance with the EP, EIA and EM&A Manual and their implementation status are presented in *Annex G*.

3.2 *CULTURAL HERITAGE*

3.2.1 *Vibration Monitoring*

In accordance with the EM&A Manual, vibration monitoring is required and the vibration control limits and vibration monitoring proposal are defined by a specialist for AMO's approval.

Baseline Monitoring

A set of initial readings should be recorded prior to commencement of each stage of demolition works or trial piling works. The baseline vibration monitoring should be conducted for duration of 5 minutes on the measurement day(s) at each vibration monitoring location.

Vibration Monitoring for Demolition Works

There are five phases/stages of vibration monitoring to be carried out for demolition works, namely Initial Reading Phase, Monitoring Stage 1, Monitoring Stage 2, Monitoring Stage 3 and Monitoring Stage 4. The monitoring location is shown in *Annex L*. The vibration monitoring should be conducted for duration of 5 minutes on the days with demolition works at each vibration monitoring location.

Vibration Monitoring for Trial Piling and Pipe/Bored Piling Works

Vibration monitoring for trial piling works and pipe/bored piling works is required. The monitoring location is shown in *Annex L*. The vibration monitoring should be conducted for duration of 5 minutes on the days with trial piling works or pipe/bored piling works at each vibration monitoring location.

Vibration Monitoring for Other Construction Works

Vibration monitoring for specific construction works other than demolition works, trial piling works and pipe/bored piling works is also required in accordance with Building Department's requirement. The monitoring location is shown in *Annex M*. The number and location of monitoring location will depend on the location of the specific construction works. The vibration monitoring should be conducted for duration of 5 minutes on a daily basis (working day) at each vibration monitoring location.

Alert, Alarm and Action Levels

The Alert, Alarm and Action (AAA) Levels are to be implemented during the vibration monitoring and shown in *Table 3.4*.

Table 3.4 *Alert, Alarm and Action (AAA) Levels for Vibration Monitoring*

Instrument Type	Item Monitored	Alert Level	Alarm Level	Action Level
Vibration Monitoring	Horizontal Movement	2.0 mm/s	2.5 mm/s	3.0 mm/s

The Event / Action Plan (EAP) for vibration monitoring is shown in *Table 3.5*.

Table 3.5 *Event and Action Plan for Vibration Monitoring*

Events	Action
Exceedance of Alert Level	Notify Management Contractor
Exceedance of Alarm Level	Notify Authorised Person/ Resident Engineer

Events	Action
Exceedance of Action Level	Cease Works and submit mitigation

3.2.2 *Mitigation Measures*

Cultural heritage mitigation measures (including those for archaeology) in accordance with the EP, EIA and EM&A Manual were implemented by the Contractor and the implementation status is given in *Annex G*.

3.3 *LANDSCAPE AND VISUAL MONITORING*

In accordance with the EM&A Manual, inspections of affected trees were conducted by an experienced and appropriately trained arborist. All irregularities that deviate from the recommended tree protection measures or could impose deleterious impacts on the protected trees were reported. Besides, implementation of mitigation measures for landscape and visual resources recommended in the EIA Report were also monitored during the site inspection.

3.3.1 *Mitigation Measures*

Landscape and visual mitigation measures in accordance with the EP, EIA and EM&A Manual were implemented by the Contractor and the implementation status is given in *Annex G*.

3.4 *ENVIRONMENTAL REQUIREMENTS IN CONTRACT DOCUMENTS*

The environmental requirements as specified in the contract documents were reviewed and were covered in the EIA's requirements.

IMPLEMENTATION STATUS ON ENVIRONMENTAL PROTECTION REQUIREMENTS

The Contractor has generally implemented the environmental mitigation measures (including those for archaeology) and requirements as stated in the EIA Report, the EP and EM&A Manual and the contract documents. The implementation status during the reporting period is summarized in *Annex G*.

Status of required submissions under the EP during the reporting period is presented in *Table 4.1*.

Table 4.1 *Status of Required Submissions*

Submission		Submission Date
<i>EP Condition</i>		
Condition 3.4	Twenty-third Monthly EM&A Report	16 October 2013

5.1 NOISE

A total of 5 sets of 30-minute construction noise measurements were carried out at the monitoring stations (NM2 and NM6) during normal weekdays of the reporting period. The monitoring results together with graphical presentations are presented in *Annex H*. The local impacts observed near the monitoring stations of NM2 and NM6 were summarised below:

- NM2: construction noise from activities in the Project Site and traffic noise from Old Bailey Street.
- NM6: construction noise from activities in the Project Site and traffic noise from Chancery Lane.

No exceedance of Action or Limit Level of construction noise was recorded during the reporting period.

5.2 CULTURAL HERITAGE**5.2.1 Vibration Monitoring***Trial Piling and Piling works*

Vibration monitoring carried out for the trial piling and piling works during the reporting period are listed below:

- 25 vibration monitoring measurements for the construction of the pipe pile walls at Parade Ground;
- 25 vibration monitoring measurements at Block 8;
- 25 vibration monitoring measurements for the construction of pipe pile walls at Old Bailey Wing (Block 50);
- 25 vibration monitoring measurements for the shaft grouted pre-bored H-piles at Block 51; and
- 21 vibration monitoring measurements at Block 17.

The monitoring results are presented in *Annex L*.

Other Construction Works

Vibration monitoring carried out for other construction works during the reporting period are listed below:

- 25 vibration monitoring measurements for the structural addition and alteration works at Block 1;
- 25 vibration monitoring measurements for the structural addition and alteration works at Block 14;
- 25 vibration monitoring measurements for the structural addition and alteration works at Block 11.

The monitoring results are presented in *Annex M*.

All monitoring results were below the Alert/Alarm/Action Levels.

5.2.2 *Heritage Site Audit*

Heritage site audits were conducted on 2, 3, 4, 8, 9, 10, 11, 15, 16, 17, 18, 21, 22, 23, 24, 25, 28, 29, 30 and 31 October 2013 by the Heritage Checker during the reporting period. Major observations and recommendations during the site inspections were listed below:

8 October 2013

- It was noticed that mark-up of openings in Building 2 were mostly incorrect or missing.

10 October 2013

- Cigarette buds were observed in one of the paint pots on the first floor of Building 1.

16 October 2013

- It was observed that scaffold components were placed on the un-protected timber floor boards on second floor of Building 4 and second floor of Building 3.

17 October 2013

- It was observed that scaffold components were placed on the un-protected timber floor boards on second floor of Building 4.

The Contractor was urged to follow-up the necessary rectification based on the inspection findings.

The follow-up actions recommended in the heritage site audits from the last reporting period (September 2013) have generally been implemented.

The tree inspection was conducted by the arborist on 2 October 2013 and major observations and recommendations in the reporting period are summarised in *Table 5.1*. The tree inspection report is contained in *Annex J*.

Table 5.1 Findings of Monthly Tree Inspection in the Reporting Period

Tree No.	Botanical Name	Overall Health Condition	Arborist's Observations / Recommendations
Tree -5	<i>Mangifera indica</i>	Good	• No further action required.
Tree -6	<i>Aleurites moluccana</i>	Fair	• No further action required.
Tree-7	<i>Aleurites moluccana</i>	Fair	• No further action required.
Tree-8	<i>Plumeria rubra</i>	Fair	• No further action required.
Tree-9	<i>Araucaria cunninghamia</i>	Fair	• No further action required.
Tree-11	<i>Dracaena marginata</i>	Fair	• No further action required.

WASTE MANAGEMENT

Wastes generated from this Project include inert construction and demolition (C&D) materials and non-inert C&D materials. Non-inert C&D materials were made up of wastes such as general refuse. With reference to relevant handling records and trip tickets of this Project, the quantities of different types of waste generated in the reporting period are summarised in *Table 5.2*. The non-inert C&D materials and general refuse generated from the Project were disposed of at the SENT Landfill. 3,120 kg of metal was generated and sent to recyclers for recycling. No plastic waste or paper / cardboard packaging was generated during the reporting period. 135 kg of solid chemical waste was produced and collected by licensed chemical waste collector during the reporting period.

Table 5.2 Quantities of Waste Generated from the Project

Month / Year	Quantity						
	C&D Materials (inert) ^(a)	C&D Materials (non-inert) ^(b)	Chemical Waste		Recycled materials		
			Solid	Liquid	Paper / cardboard	Plastics	Metals
October 2013	2,170.54 tonnes	157.48 tonnes	135 kg	0 L	0 kg	0 kg	3,120 kg

Notes:

- (a) Inert C&D materials include bricks, concrete, building debris, rubble and excavated soil.
 (b) The figure presented under non-inert C&D materials represents quantities of non-recyclable materials such as general refuse which were disposed of at SENT Landfill. Recycled materials are reported separately.

Joint environmental site inspection was conducted by the representatives of the Contractor, IEC and the ET in the reporting period on 17 October 2013. There was no non-compliance recorded during the site inspection.

Follow-up Actions for the Last Site Audit

Nil.

Observations and Recommendations of this Reporting Month

Nil.

7 ENVIRONMENTAL NON-CONFORMANCE

7.1 SUMMARY OF MONITORING EXCEEDANCE

No exceedance of Action or Limit Level of construction noise or Alert, Alarm and Action Levels of vibration was recorded during the reporting period.

7.2 SUMMARY OF ENQUIRY

No enquiry was recorded during the reporting period.

7.3 SUMMARY OF ENVIRONMENTAL NON-COMPLIANCE

No non-compliance event was recorded during the reporting period.

7.4 SUMMARY OF ENVIRONMENTAL COMPLAINT

No complaint was received during the reporting period. Cumulative number of complaints is presented in *Annex K*.

7.5 SUMMARY OF ENVIRONMENTAL SUMMONS AND SUCCESSFUL PROSECUTION

No summons was received during the reporting period.

8.1 KEY ISSUES FOR THE COMING MONTH

Works to be undertaken for the coming monitoring period are summarised in *Table 8.1*.

Table 8.1 Construction Works to be Undertaken in the Coming Month

Work to be Undertaken
<ul style="list-style-type: none"> • General strip out works at Block 15 and Block 19; • Structural addition and alteration works at Block 1, Block 11, Block 12, Block 14, Block 15 and Block 19; • Roof tiles replacement works at Block 1 and Block 6; • Demolition works to Block 2, Block 3, Block 4, Block 9, Block 10, Block 11, Block 12, Block 13, Block 14, Block 15 and Block 19; • Underpinning works of Block 1, Block 3 and Block 14; • Channel planking work at Block 19; • E&M opening at Block 6 and Block 7; • Excavation and construction of ground beam at Block 17; • Basement construction at Parade Ground; • Timber doors and windows repair works at Block 1, Block 3, Block 4, Block 6 and Block 7; • E&M installation at Block 1; • External scaffolding erection at Block 2, Block 4 and Block 9; • Old Bailey Wing (Block 50) piling works and Arbuthnot Wing (Block 51) loading test preparation; • Excavation and lateral support at Arbuthnot Wing; • Old Bailey Wing pump well test; and • Revetment wall strengthening of R175 and R806.

Potential environmental impacts arising from the above construction activities are mainly associated with dust, construction noise, site runoff and waste management.

8.2 MONITORING SCHEDULE FOR THE NEXT MONTH

The tentative schedule of noise monitoring for the next reporting period is presented in *Annex D*.

8.3 CONSTRUCTION PROGRAMME FOR THE NEXT MONTH

The most updated construction programme for the Project is presented in *Annex I*.

CONCLUSIONS

The *Environmental Monitoring and Audit (EM&A) Report* presents the EM&A works undertaken during the period from 1 October to 31 October 2013 in accordance with EM&A Manual and the requirement under EP-408/2011/B.

No exceedance of Action or Limit Level of construction noise was recorded at designated monitoring stations during the reporting period.

No exceedance of the Alert, Alarm and Action Levels of vibration was recorded during the reporting period.

No enquiry was received during the reporting period.

No non-compliance event was recorded during the reporting period.

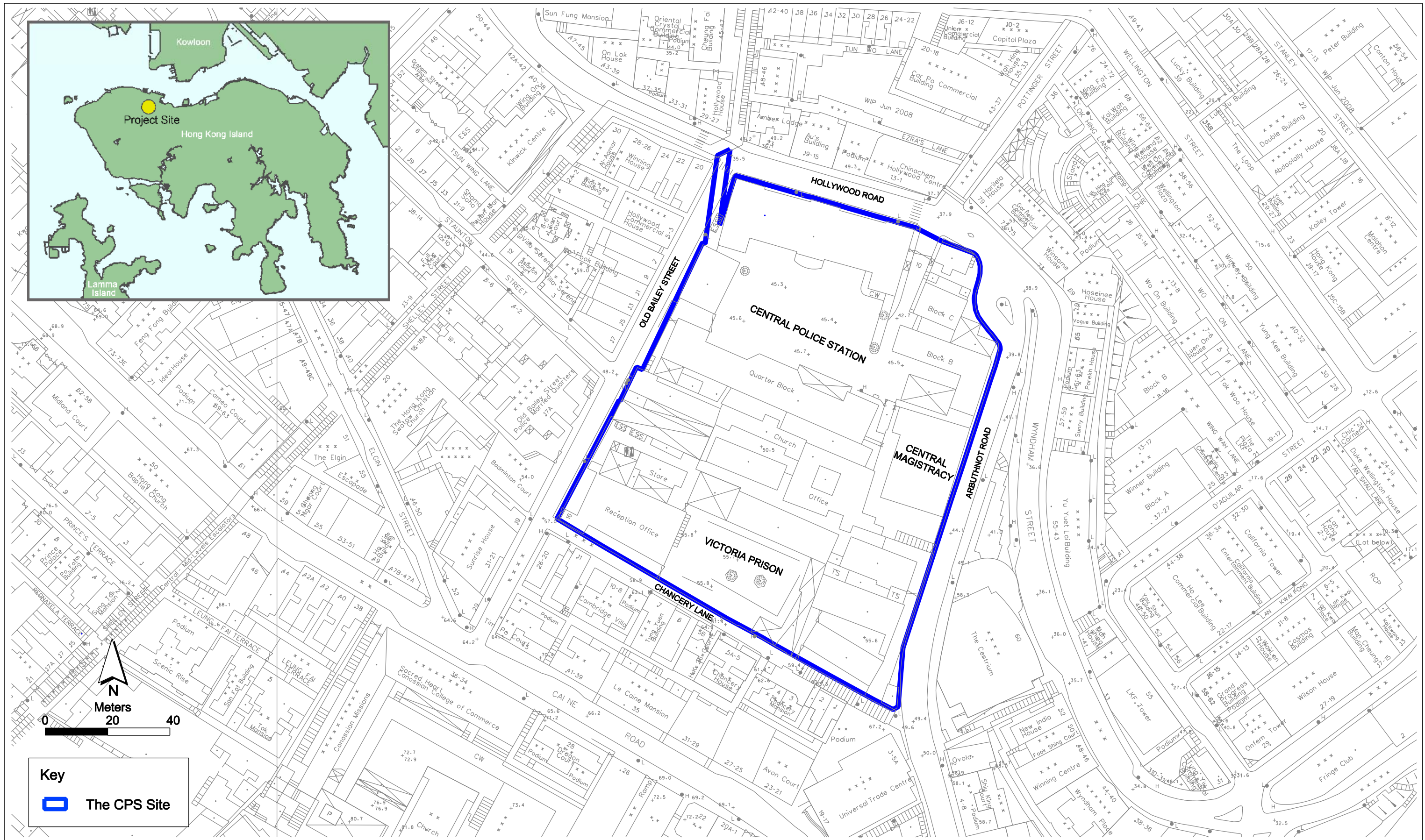
No complaint was received during the reporting period.

No summons/prosecution was received during the reporting period.

The ET will keep track on the EM&A programme to ensure compliance of environmental requirements and the proper implementation of all necessary mitigation measures.

Annex A

Locations of Works Areas and the Surroundings



Annex A1

Project Location

**Environmental
Resources
Management**



賽馬會文物保育有限公司
The Jockey Club CPS Limited



- Key**
- Central Police Station
 - Former Central Magistracy
 - Victoria Prison Compound
- Central Police Station**
- ① Police Headquarters
 - ② Armoury
 - ③ Barrack Block
 - ④ Married Inspectors Quarters and Deputy Superintendents House
 - ⑤ Garage
 - ⑥ Married Sergeant's Quarters
 - ⑦ Single Inspection Quarters
 - ⑧ Ablutions Block
- Former Central Magistracy**
- ⑨ Central Magistracy
- Victoria Prison Compound**
- ⑩ Superintendents House
 - ⑪ A Hall
 - ⑫ B Hall
 - ⑬ C Hall
 - ⑭ D Hall
 - ⑮ E Hall
 - ⑯ Workshops & Laundry
 - ⑰ F Hall
 - ⑱ General Office
 - ⑲ Bauhinia House

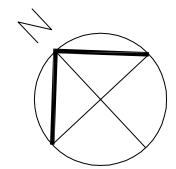
Annex A2

Declared Monuments within the Project Site

Environmental Resources Management



賽馬會文物保育有限公司
The Jockey Club CPS Limited



LEGEND

- 1. General Strip Out
- 2. ELN
- 3. Basement Construction
- 4. Underpinning Works
- 5. E&M Installation / opering
- 6 Roof Tiles Replacement Works
- 7. Pilling Works & pre-Loading Test
- 8. New Structure Construction
- 9. Structure A&A Works
- 10. Repair Works to Timber Window, Door
- 11. Demolition Works / Slab Demolition
- 12. Second Masonry Loading Test
- 13. External Scaffolding Erection
- 14. Removal of non-Structural Infill Wall
- 15. Pump Well Installation and Test
- 16. Revetment Wall Strengthening

© Gammon Construction Limited
 This document and the copyright in it is the property of Gammon Construction Limited. Gammon Construction Limited shall forthwith take all appropriate action against any infringer of its copyright.

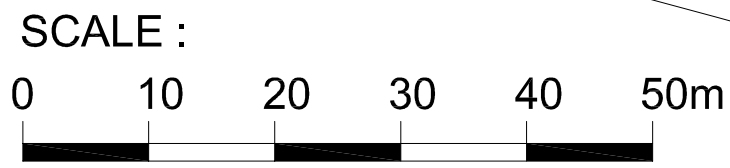
CENTRAL POLICE STATION

Client
 賽馬會文物保育有限公司
 The Jockey Club CPS Limited

Contractor

Drawing Title
SITE LAYOUT PLAN

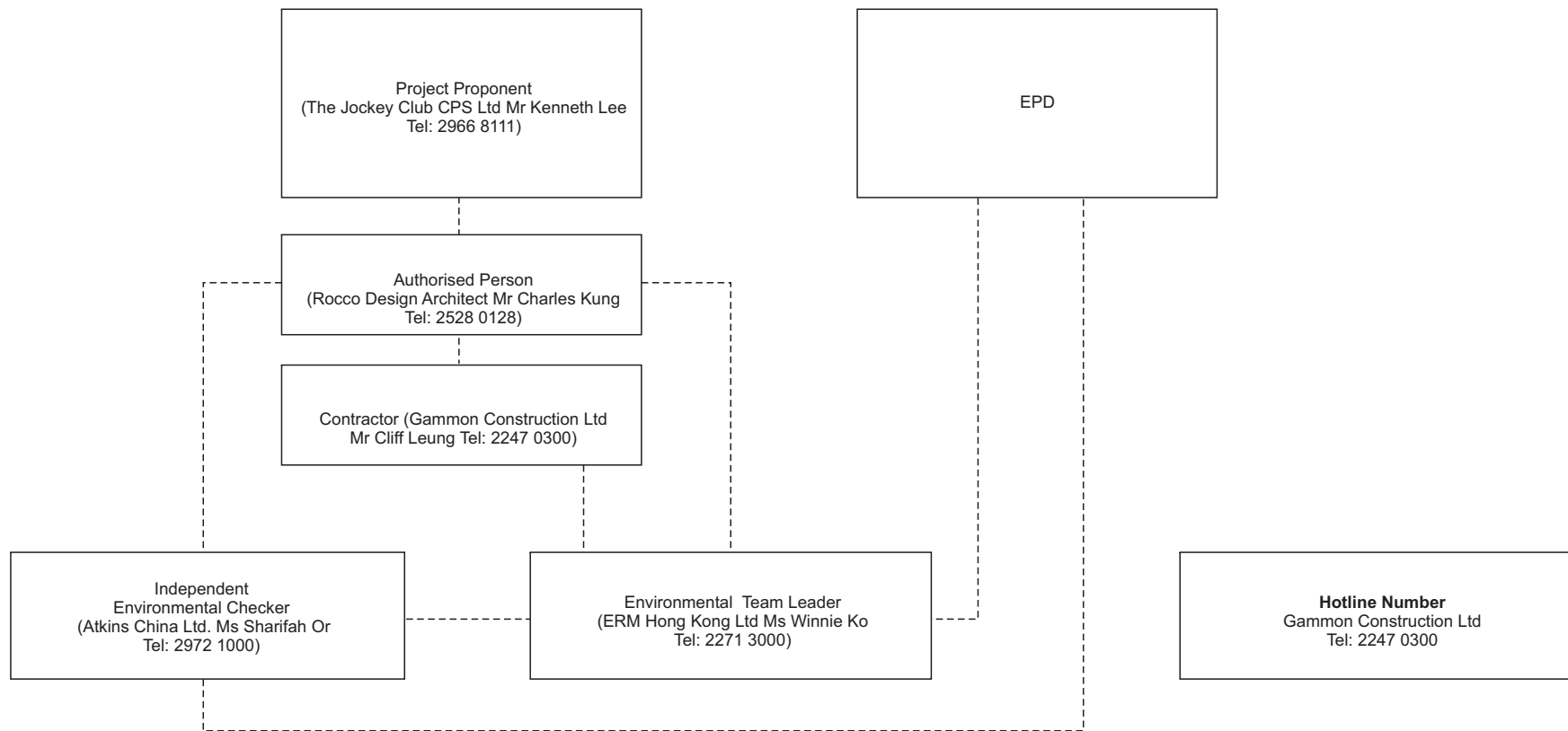
Drawn	Scale	N.T.S.
Designed	Status	Marked for Enquiry & Complaint log (CPS/E&C/09)
Checked		
Approved	Drawing No.	
CAD Ref		



Annex A3 Site Layout Plan marked with Works (October- 2013)

Annex B

Project Organization Chart and Contact Detail



Key
 - - - - - Line of Communication

Annex C

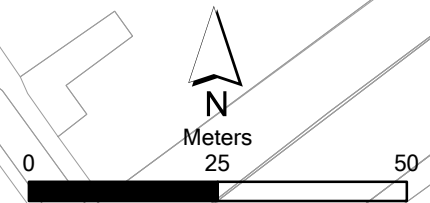
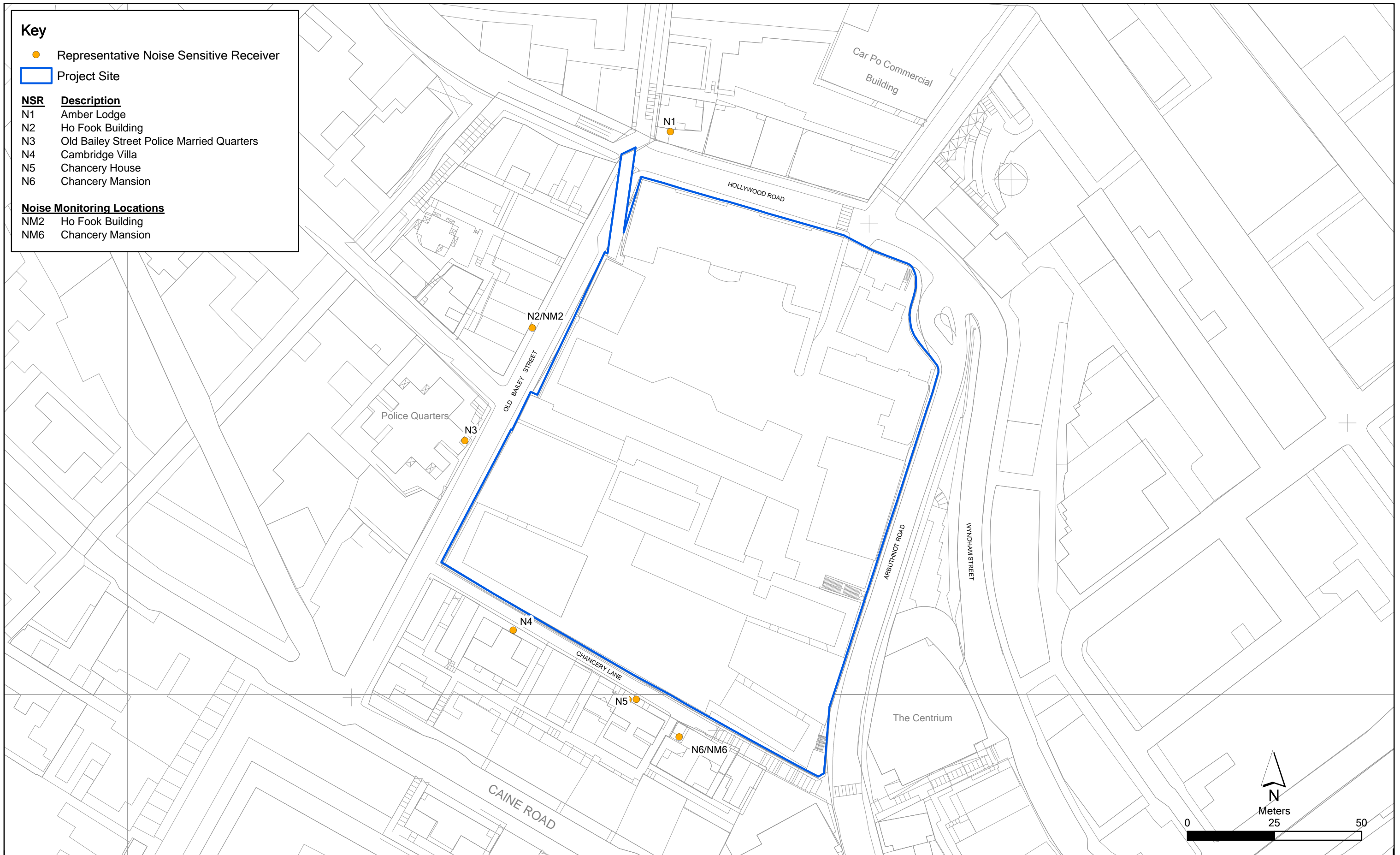
Locations of Noise
Monitoring Stations and
Noise Sensitive Receivers

Key

- Representative Noise Sensitive Receiver
- ▭ Project Site

NSR	Description
N1	Amber Lodge
N2	Ho Fook Building
N3	Old Bailey Street Police Married Quarters
N4	Cambridge Villa
N5	Chancery House
N6	Chancery Mansion

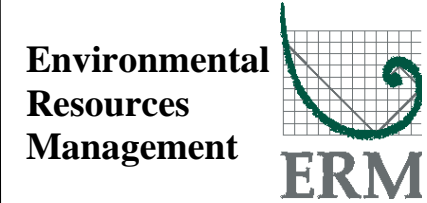
Noise Monitoring Locations	
NM2	Ho Fook Building
NM6	Chancery Mansion



Annex C

Location of Representative Noise Sensitive Receivers and Noise Monitoring Locations

File: 0095646_NSR_NM_May2012.mxd
Date: 09/05/2012



賽馬會文物保育有限公司
The Jockey Club CPS Limited

Annex D

Monitoring Schedule of the Reporting Period and Next Month

**Central Police Station Compound Conservation and Revitalisation
(Ho Fook Building - NM2 & Chancery Mansion - NM6)
Monitoring Schedule for Reporting Month - October 2013**

Sunday	Monday	Tuesday	Wednesday	Thursday	Friday	Saturday
		01-Oct	02-Oct	03-Oct	04-Oct	05-Oct
				Noise Monitoring at NM2 & NM6		
06-Oct	07-Oct	08-Oct	09-Oct	10-Oct	11-Oct	12-Oct
			Noise Monitoring at NM2 & NM6			
13-Oct	14-Oct	15-Oct	16-Oct	17-Oct	18-Oct	19-Oct
		Noise Monitoring at NM2 & NM6				
20-Oct	21-Oct	22-Oct	23-Oct	24-Oct	25-Oct	26-Oct
	Noise Monitoring at NM2 & NM6					Noise Monitoring at NM2 & NM6
27-Oct	28-Oct	29-Oct	30-Oct	31-Oct		

**Central Police Station Compound Conservation and Revitalisation
(Ho Fook Building - NM2 & Chancery Mansion - NM6)
Monitoring Schedule for Next Reporting Month - November 2013**

Sunday	Monday	Tuesday	Wednesday	Thursday	Friday	Saturday
					01-Nov	02-Nov
					Noise Monitoring at NM2 & NM6	
03-Nov	04-Nov	05-Nov	06-Nov	07-Nov	08-Nov	09-Nov
				Noise Monitoring at NM2 & NM6		
10-Nov	11-Nov	12-Nov	13-Nov	14-Nov	15-Nov	16-Nov
			Noise Monitoring at NM2 & NM6			
17-Nov	18-Nov	19-Nov	20-Nov	21-Nov	22-Nov	23-Nov
		Noise Monitoring at NM2 & NM6				
24-Nov	25-Nov	26-Nov	27-Nov	28-Nov	29-Nov	30-Nov
	Noise Monitoring at NM2 & NM6					Noise Monitoring at NM2 & NM6

Annex E

Calibration Reports for Calibrators and Sound Level Meters

Certificate of Calibration

校正證書

Certificate No. : C133573
證書編號

ITEM TESTED / 送檢項目 (Job No. / 序引編號 : IC13-1422)

Description / 儀器名稱 : Sound Level Meter
Manufacturer / 製造商 : Rion
Model No. / 型號 : NL-31
Serial No. / 編號 : 00410224
Supplied By / 委託者 : Envirotech Services Co.
Shop 6, G/F., Casio Mansion, 209 Shaukeiwan Road,
Hong Kong

TEST CONDITIONS / 測試條件

Temperature / 溫度 : $(23 \pm 2)^{\circ}\text{C}$ Relative Humidity / 相對濕度 : $(55 \pm 20)\%$
Line Voltage / 電壓 : ---

TEST SPECIFICATIONS / 測試規範

Calibration check

DATE OF TEST / 測試日期 : 14 June 2013

TEST RESULTS / 測試結果

The results apply to the particular unit-under-test only.
All results are within manufacturer's specification.
The results are detailed in the subsequent page(s).

The test equipment used for calibration are traceable to National Standards via :

- The Government of The Hong Kong Special Administrative Region Standard & Calibration Laboratory
- Rohde & Schwarz Laboratory, Germany
- Fluke Everett Service Center, USA
- Agilent Technologies, USA

Tested By : 
測試 : K C Lee

Certified By : 
核證 : K K Wong

Date of Issue : 17 June 2013
簽發日期

The test equipment used for calibration are traceable to the Nation Standards as specified in this certificate. This certificate shall not be reproduced except in full, without the prior written approval of this laboratory.

本證書所載校正用之測試器材均可溯源至國際標準。局部複印本證書需先獲本實驗室所書面批准。

Certificate of Calibration

校正證書

Certificate No. : C133573

證書編號

- The unit-under-test (UUT) was allowed to stabilize in the laboratory for over 12 hours, and switched on to warm up for over 10 minutes before the commencement of the test.
- Self-calibration was performed before the test.
- The results presented are the mean of 3 measurements at each calibration point.
- Test equipment :

Equipment ID	Description	Certificate No.
CL280	40 MHz Arbitrary Waveform Generator	C130019
CL281	Multifunction Acoustic Calibrator	DC110233

- Test procedure : MA101N.

- Results :

6.1 Sound Pressure Level

6.1.1 Reference Sound Pressure Level

UUT Setting				Applied Value		UUT Reading (dB)	IEC 61672 Class 1 Spec. (dB)
Range (dB)	Mode	Frequency Weighting	Time Weighting	Level (dB)	Freq. (kHz)		
30 - 120	L _A	A	Fast	94.00	1	93.6	± 1.1

6.1.2 Linearity

UUT Setting				Applied Value		UUT Reading (dB)
Range (dB)	Mode	Frequency Weighting	Time Weighting	Level (dB)	Freq. (kHz)	
30 - 120	L _A	A	Fast	94.00	1	93.6 (Ref.)
				104.00		103.6
				114.00		113.6

IEC 61672 Class 1 Spec. : ± 0.6 dB per 10 dB step and ± 1.1 dB for overall different.

6.2 Time Weighting

UUT Setting				Applied Value		UUT Reading (dB)	IEC 61672 Class 1 Spec. (dB)
Range (dB)	Mode	Frequency Weighting	Time Weighting	Level (dB)	Freq. (kHz)		
30 - 120	L _A	A	Fast	94.00	1	93.6	Ref.
			Slow			93.5	± 0.3

The test equipment used for calibration are traceable to the Nation Standards as specified in this certificate. This certificate shall not be reproduced except in full, without the prior written approval of this laboratory.

本證書所載校正用之測試器材均可溯源至國際標準。局部複印本證書需先獲本實驗室書面批准。

Certificate of Calibration 校正證書

Certificate No. : C133573
證書編號

6.3 Frequency Weighting

6.3.1 A-Weighting

UUT Setting				Applied Value		UUT Reading (dB)	IEC 61672 Class 1 Spec. (dB)
Range (dB)	Mode	Frequency Weighting	Time Weighting	Level (dB)	Freq.		
30 - 120	L _A	A	Fast	94.00	63 Hz	67.3	-26.2 ± 1.5
					125 Hz	77.3	-16.1 ± 1.5
					250 Hz	84.9	-8.6 ± 1.4
					500 Hz	90.3	-3.2 ± 1.4
					1 kHz	93.6	Ref.
					2 kHz	94.9	+1.2 ± 1.6
					4 kHz	94.8	+1.0 ± 1.6
					8 kHz	92.6	-1.1 (+2.1 ; -3.1)
					12.5 kHz	89.7	-4.3 (+3.0 ; -6.0)

6.3.2 C-Weighting

UUT Setting				Applied Value		UUT Reading (dB)	IEC 61672 Class 1 Spec. (dB)
Range (dB)	Mode	Frequency Weighting	Time Weighting	Level (dB)	Freq.		
30 - 120	L _C	C	Fast	94.00	63 Hz	92.7	-0.8 ± 1.5
					125 Hz	93.4	-0.2 ± 1.5
					250 Hz	93.6	0.0 ± 1.4
					500 Hz	93.7	0.0 ± 1.4
					1 kHz	93.7	Ref.
					2 kHz	93.5	-0.2 ± 1.6
					4 kHz	93.0	-0.8 ± 1.6
					8 kHz	90.7	-3.0 (+2.1 ; -3.1)
					12.5 kHz	87.9	-6.2 (+3.0 ; -6.0)

Remarks : - UUT Microphone Model No. : UC-53A & S/N : 307154

- Mfr's Spec. : IEC 61672 Class 1

- Uncertainties of Applied Value : 94 dB : 63 Hz - 125 Hz : ± 0.35 dB
 250 Hz - 500 Hz : ± 0.30 dB
 1 kHz : ± 0.20 dB
 2 kHz - 4 kHz : ± 0.35 dB
 8 kHz : ± 0.45 dB
 12.5 kHz : ± 0.70 dB
 104 dB : 1 kHz : ± 0.10 dB (Ref. 94 dB)
 114 dB : 1 kHz : ± 0.10 dB (Ref. 94 dB)

- The uncertainties are for a confidence probability of not less than 95 %.

Note :

The values given in this Certificate only relate to the values measured at the time of the test and any uncertainties quoted will not include allowance for the equipment long term drift, variations with environment changes, vibration and shock during transportation, overloading, mis-handling, or the capability of any other laboratory to repeat the measurement. Sun Creation Engineering Limited shall not be liable for any loss or damage resulting from the use of the equipment.

The test equipment used for calibration are traceable to the Nation Standards as specified in this certificate. This certificate shall not be reproduced except in full, without the prior written approval of this laboratory.

本證書所載校正用之測試器材均可溯源至國際標準。局部複印本證書需先獲本實驗所書面批准。

Certificate of Calibration

校正證書

Certificate No. : C134306
證書編號

ITEM TESTED / 送檢項目 (Job No. / 序引編號 : IC13-1709)

Description / 儀器名稱 : Sound Level Calibrator
Manufacturer / 製造商 : Rion
Model No. / 型號 : NC-73
Serial No. / 編號 : 10786708
Supplied By / 委託者 : Envirotech Services Co.
Shop 6, G/F., Casio Mansion, 209 Shaukeiwan Road,
Hong Kong

TEST CONDITIONS / 測試條件

Temperature / 溫度 : (23 ± 2)°C
Relative Humidity / 相對濕度 : (55 ± 20)%
Line Voltage / 電壓 : ---

TEST SPECIFICATIONS / 測試規範

Calibration check

DATE OF TEST / 測試日期 : 12 July 2013

TEST RESULTS / 測試結果

The results apply to the particular unit-under-test only.
All results are within manufacturer's specification.
The results are detailed in the subsequent page(s).

The test equipment used for calibration are traceable to National Standards via :

- The Government of The Hong Kong Special Administrative Region Standard & Calibration Laboratory
- Rohde & Schwarz Laboratory, Germany
- Fluke Everett Service Center, USA
- Agilent Technologies, USA

Tested By : 
測試 : K C Lee

Certified By : 
核證 : K M Wu

Date of Issue : 15 July 2013
簽發日期

The test equipment used for calibration are traceable to the Nation Standards as specified in this certificate. This certificate shall not be reproduced except in full, without the prior written approval of this laboratory.

本證書所載校正用之測試器材均可溯源至國際標準。局部複印本證書需先獲本實驗所書面批准。

Certificate of Calibration

校正證書

Certificate No. : C134306

證書編號

- The unit-under-test (UUT) was allowed to stabilize in the laboratory for over 12 hours before the commencement of the test.
- The results presented are the mean of 3 measurements at each calibration point.
- Test equipment :

<u>Equipment ID</u>	<u>Description</u>	<u>Certificate No.</u>
CL130	Universal Counter	C133632
CL281	Multifunction Acoustic Calibrator	DC130171
TST150A	Measuring Amplifier	C120886

- Test procedure : MA100N.

- Results :

5.1 Sound Level Accuracy

UUT Nominal Value	Measured Value (dB)	Mfr's Spec. (dB)	Uncertainty of Measured Value (dB)
94 dB, 1 kHz	93.8	± 0.5	± 0.2

5.2 Frequency Accuracy

UUT Nominal Value (kHz)	Measured Value (kHz)	Mfr's Spec.	Uncertainty of Measured Value (Hz)
1	0.990	1 kHz ± 2 %	± 1

Remark : The uncertainties are for a confidence probability of not less than 95 %.

Note :

The values given in this Certificate only relate to the values measured at the time of the test and any uncertainties quoted will not include allowance for the equipment long term drift, variations with environment changes, vibration and shock during transportation, overloading, mis-handling, or the capability of any other laboratory to repeat the measurement. Sun Creation Engineering Limited shall not be liable for any loss or damage resulting from the use of the equipment.

Annex F

Event / Action Plans for Noise

Annex F Event and Action Plan for Noise

Event	Action			
	Environmental Team (ET)	Independent Environmental Checker (IEC)	Authorised Person (AP)	Contractor
Action Level	<ol style="list-style-type: none"> 1. Notify IEC and Contractor; 2. Carry out investigation; 3. Report the results of investigation to the IEC, AP and Contractor; 4. Discuss with the Contractor and formulate remedial measures; 5. Increase monitoring frequency to check mitigation effectiveness. 	<ol style="list-style-type: none"> 1. Review the analysed results submitted by the ET; 2. Review the proposed remedial measures by the Contractor and advise the AP accordingly; 3. Supervise the implementation of remedial measures. 	<ol style="list-style-type: none"> 1. Confirm receipt of notification of failure in writing; 2. Notify Contractor; 3. Require Contractor to proposed remedial measures for the analysed noise problem; 4. Ensure remedial measures are properly implemented. 	<ol style="list-style-type: none"> 1. Submit noise mitigation proposals to IEC; 2. Implement noise mitigation proposals.
Limit Level	<ol style="list-style-type: none"> 1. Identify source; 2. Inform IEC and AP; 3. Repeat measurements to confirm findings; 4. Increase monitoring frequency; 5. Carry out analysis of Contractor's working procedures to determine possible mitigation to be implemented; 6. Inform IEC, AP and EPD the causes and actions taken for the exceedances; 7. Assess effectiveness of Contractor's remedial actions and keep IEC, EPD and AP informed of the results; 8. If exceedance stops, cease additional monitoring. 	<ol style="list-style-type: none"> 1. Discuss amongst AP, ET, and Contractor on the potential remedial actions; 2. Review Contractors remedial actions whenever necessary to assure their effectiveness and advise the AP accordingly; 3. Supervise the implementation of remedial measures. 	<ol style="list-style-type: none"> 1. Confirm receipt of notification of failure in writing; 2. Notify Contractor; 3. Require Contractor to propose remedial measures for the analysed noise problem; 4. Ensure remedial measures properly implemented; 5. If exceedance continues, consider what portion of the work is responsible and instruct the Contractor to stop that portion of work until the exceedance is abated. 	<ol style="list-style-type: none"> 1. Take immediate action to avoid further exceedance; 2. Submit proposals for remedial actions to IEC within 3 working days of notification; 3. Implement the agreed proposals; 4. Resubmit proposals if problem still not under control; 5. Stop the relevant portion of works as determined by the AP until the exceedance is abated.

Annex G

Summary of Implementation Status

Annex G Implementation Schedule for Environmental Protection Measures

EIA Ref.	EM&A Ref.	Recommended Mitigation Measures	Location	When to Implement the Measure	Status
<i>Cultural Heritage</i>					
S3.9.1	S3.2.6	Subject to the outcome of the archaeological investigation, if archaeological deposits are identified to be impacted by the proposed development, appropriate mitigation measures will be recommended and agreed with AMO.	In accordance with the recommendations in the Archaeological Action Plan (AAP) issued on 21 Dec 11 and approved on 30 Dec 11 by AMO	During detailed design and construction	No field work in the reporting month.
S3.9.2	S3.3.1	<u>Vibration Monitoring</u> A baseline condition survey and baseline vibration impact will be conducted by a specialist for the approval of AMO and Buildings Department prior to commencement of the construction works to define the vibration control limits and recommend a vibration monitoring proposal for the concerned historic buildings and structures in and outside CPS for AMO's prior approval before commencement of the construction works.	Historic buildings and structures in CPS, the granite walls at Old Bailey Street and the proposed Grade 3 historic building (No. 20 Hollywood Road)	During detailed design and construction	√
S3.9.2	S3.3.3	<u>Compliance of the Approved Measures and Auditing</u> Staff training by an experience building conservation expert or relevant competent person(s) in the environmental team of the project should be provided to the on-site staffs, contractors, sub-contractors and workers of the project before commencement of works to ensure their full understanding of the approved protection schedule, restoration proposal and work methodologies related to cultural heritage, and their respective responsibilities in the implementation of the environmental protection measures. Regular site audit for cultural heritage should be carried out in the construction phase by an experience building conservation expert in the environmental team ("the Heritage Checker") to investigate the site practice of the contractors and workers and their compliance of the approved work methodologies with respect of conservation works, mitigations for cultural heritage and any related works. A detailed	Whole site	Prior to and during construction	√

EIA Ref.	EM&A Ref.	Recommended Mitigation Measures	Location	When to Implement the Measure	Status
		<p>proposal of the regular audit such as methodology (e.g. performance and monitoring indicators, control tools, frequency of the audit, etc.) and the conservation professionals to be engaged should be agreed with AMO prior to work commencement.</p> <p>The Heritage Checker shall also attend the regular site meetings with AMO and report the compliance and effectiveness of the mitigation measures for cultural heritage.</p>			
S3.9.3	S3.3.4	<p><u>Archival Recording</u></p> <p>An archival recording should be conducted to provide a detailed reference for the update of the Conservation Management Plan and inventory of historical features of the monuments, the preparation of as-built drawings showing the condition of the historic buildings and structures after the completion of the construction works. These archival records will be a reference source for future maintenance of the character defining elements, conservation of the monuments, interpretation and conservation education of the Site. The archival recording shall include but not limit to the video and photographic recording on the detailed process of the repair trials for different kinds of historical features, conservation works of character defining elements and historic fabrics of the monuments, and a written records of any new changes to the detailed design made in the construction phase illustrate with photos and drawings. A full set of the archives records (including both hard and soft copies) should be submitted to the AMO for approval after the work completion for record purpose. Any new findings related to the conservation of built heritage in the Site identified during the detailed design stage and construction phases shall be properly recorded in details for notification to the AMO and update of the Conservation Management Plan.</p>	Whole Site	During detailed design, construction and prior to operation	N/A – Archival recording will be conducted at later stage.
S3.7.3	-	<p><u>General Construction Methods</u></p> <p>Prior to the commencement of the modification/refurbishment works at an existing building or structure (e.g. masonry walls near the Old Bailey Wing) , a site survey will be carried out by the design team, and all building dimensions and levels of the building/structure shown will be</p>	Whole site	During construction	√

EIA Ref.	EM&A Ref.	Recommended Mitigation Measures	Location	When to Implement the Measure	Status
		checked and confirmed by the contractor. Non-percussive piling methods will be adopted for the construction of the foundation for the new buildings. Protective and precaution measures to the existing buildings and structure adjacent to the work area (including the proposed Grade 3 historic building (No. 20 Hollywood road) and the granite boundary walls between the Ablutions Block of the police station (building no. 08) and the General Office of the prison area (building no. 18) which is adjacent to the new construction of the Old Bailey Wing and for an old granite walls at Old Bailey Street within 15m from the new construction) shall be provided to avoid damage to the existing features and to safeguard the structural integrity during the course of construction. Small scale handheld pneumatic tools with minimal vibration impact to the existing buildings/ structures are selected so as to have a better logistic and handling at the existing buildings and structures, which usually have only narrow working areas. In cases of the local demolition of structural elements, demountable platforms will be erected to temporarily support the affected area and divert the loading from above to avoid instability and create excessive cracking and settlement of the building/structure.			
S3.7.1 & 3.7.2	-	<p>Implementation and update of the Conservation Management Plan (CMP). Any new findings related to the conservation of the built heritage in the site identified during the detailed design and construction stage shall be properly recorded in details for the notification to the AMO and update in the CMP. After the construction, a cartographic and photographic recording on the restored historic buildings, historic features and the site shall be conducted and the following records shall be included into the CMP as appendices for updating and record purpose:</p> <ul style="list-style-type: none"> • one set of measured drawings and photographic records showing the as-built condition of historic buildings and structures; and • an updated inventory list of the historic features together with the cross referenced location plans and photo records. <p>One set of updated CMP shall be submitted to the AMO for approval before the operation stage of the project.</p>	Whole site	During detailed design, construction, post-construction and operation	√ - CMP was implemented during the reporting month. There were no updates for the CMP.

EIA Ref.	EM&A Ref.	Recommended Mitigation Measures	Location	When to Implement the Measure	Status
<i>Landscape & Visual</i>					
S4.7.27	-	<p><u><i>In-situ Tree Protection - Cordon Zone (CZ)</i></u></p> <p>Cordon off each tree along its drip line (below the crown) with a chain-link fencing of 2.5 m height with padlocked gate, allowing limited access to area only to authorized persons. The base of the perimeter fence will be sealed up to 30 cm height to ensure that no construction drainage water will enter. If grouting is to be conducted less than 5 m from the edge of the CZ, a waterproof membrane will be installed below the ground to a depth of 1.5 m on the outer edge of the CZ to prevent the subsurface lateral movement of contaminated construction wastewater from intruding the soil inside the CZ.</p>	Whole site	During construction	<p>√ - Part of the cordon zone of Tree-5 has been used as a worker storage room. The Contractor was recommended to pay utmost attention to potential land pollution at the worker storage room at all times.</p> <p>Scaffolding has been set up close to Tree-5 within the cordon zone. The Contractor was reminded to perform proper measures to protect Tree-5 during the carrying out of works within the cordon zone.</p>
S4.7.2	-	<p><u><i>In-situ Tree Protection - Advanced & Phased Root Pruning</i></u></p> <p>All edges of the CZ that will be affected by excavation will undergo root pruning by a trained arborist or horticulturist, in advance of the earth work. The entire affected length of the CZ, plus 3 m additional length at both ends, shall be designated as the root pruning segment (RPS). The require trench will be opened manually in the RPS, be 1.5 m deep and 1 m wide, and closed on the same day after pruning with a good soil mix. All roots with a diameter >20 mm encountered in the course of trench opening shall be cut flushed with the inner wall of the trench. If the RPS exceeds one-quarter of the CZ circumference, the root pruning should be conducted in two stages. Each phase will tackle half of the RPS length. After the first phase, the tree will be allowed to recuperate for not less than four months before the second phase root pruning is conducted. The RPS shall be protected by sheet piles along the outer edge. The rig that installs the piles and the associated operations shall not intrude into the CZ or injure the protected tree.</p>	Whole site	During construction	N/A – no root pruning has been conducted yet
S4.7.2	-	<p><u><i>In-situ Tree Protection - Foliage cleansing system</i></u></p> <p>A sprinkler cleansing system will be installed either in the crown of the tree or at a suitable location on an adjacent building to provide the</p>	Whole site	During construction	√

EIA Ref.	EM&A Ref.	Recommended Mitigation Measures	Location	When to Implement the Measure	Status
		means to wash the foliage of the accumulated dust when necessary, particularly in the dry season.			
S4.7.2	S4	<p><u>In-situ Tree Protection - Monthly inspection</u></p> <p>Monthly inspection of affected trees by an experienced and appropriately trained arborist or horticulturist using Form 1 – Tree Group Inspection Form and Form 2 – Tree Risk Assessment Form developed by Development Bureau (http://www.trees.gov.hk/en/doc/TRAGuideline_July2010version_combine.pdf) or a form designed by a tree expert and approved by Tree Management Office. All irregularities that deviate from the recommended tree protection measures, or could impose deleterious impacts on the protected trees, must be reported to the authorized person or the tree expert within two days.</p>	Whole site	During construction	√
S4.7.2	-	<p><u>Light Control</u></p> <p>Control of night-time lighting shall be implemented to minimise impact to adjacent VSRs.</p>	Whole site	During construction and operation	√
S4.7.2	S4	<p><u>Compensatory Tree Planting</u></p> <p>A new planting site has been identified for compensatory tree planting in the Parade Ground. The planting is to compensate for felling of T10. The existing tree site will be enlarged to become a wide tree strip to accommodate at least six trees. The entire strip of land that accommodates T1 to T4 should be revamped to improve the soil condition for future tree growth.</p> <p>The new tree strip should be 4 m wide and covered by porous unit pavers to permit the entry of rain and irrigation water and air exchange between the soil and the atmosphere. The unit pavers should be supported by small columns to create a vault-like structure so as to avoid compaction of the underlying soil due to pedestrian trampling. The unit pavers will be movable to provide access to the soil underneath so that fertilizers and conditioners could be added on a</p>	At identified compensatory tree planting location at the Parade Ground	During detailed design and construction	N/A – Compensatory Tree Planting will be conducted at later stage.

EIA Ref.	EM&A Ref.	Recommended Mitigation Measures	Location	When to Implement the Measure	Status
		<p>regular basis. The air conditioner unit currently located near the proposed planting site should also be removed. This new tree planting site should also be provided with proper irrigation.</p> <p>Pursuant to the "Environment, Transport and Works Bureau Technical Circular (Works) No. 3/2006 Tree Preservation", the compensation ratio should preferably be 1:1 according to trunk girth. T10 has a DBH of 20 cm (Table 4.3), and it is proposed that six trees of heavy standard size be planted, each with a DBH of around 10 cm and root balls of not less than 0.75 m diameter and 0.75 m depth,. Since the aggregate DBH of the new trees would be 60 cm, the rate of compensation is equivalent to three times the DBH of T10, far beyond the requirements</p> <p>The six replacement trees should be planted in the new tree strip in two staggered rows, maximising distance between each tree to avoid mutual interference in the future. It is recommended that the species selected should have a small final dimension of less than 10 m height given the proximity to built structures such as the retaining wall and buildings. Two each of the outstanding and related flowering tree species connected to local natural history are suggested::</p> <ul style="list-style-type: none"> - <i>Bauhinia</i> 'Blakeana' a native evergreen species with deep mauve flowers and an exceptionally long flowering period from late autumn to early spring. - <i>Bauhinia purpure</i>, a native evergreen with lighter purple flowers from late autumn to early winter. - <i>Bauhinia variegata</i>, an exotic deciduous species, with pale pinkish flowers in spring to early summer often when the tree has little or no leaves. 			
S4.7.2	S4	<p><u>Vertical Greening</u></p> <p>Within the limitations of the conservation of the CPS character, greening of vertical structures should be provided where possible.</p> <p>As such it is recommended that the inner southern wall of the Site be planted as a green wall. The plantings should be inserted in between each of the large protruding piers and an offset be made from both the</p>	Inner Southern Wall	During detailed design and construction	N/A – No vertical greening was conducted during the reporting month.

EIA Ref.	EM&A Ref.	Recommended Mitigation Measures	Location	When to Implement the Measure	Status
		top and bottom edge so that old and new are equally visible. An independent frame should be strategically positioned in order to ensure minimal disturbance to the original wall, and provide the main structural support and planting surface for the green wall. The frame on to which the new green will be planted should contain its own irrigation system so that moisture for the plants will remain mainly on the planting surface and not the existing wall behind. The planting chosen should be appropriate to the Hong Kong climate, requiring relatively little maintenance to sustain the quality of both plants and wall.			
S4.7.2	-	<i>New Custom Paving</i> New, Patterned, High Quality, Concrete Custom Pavers should replace most of the existing paving in the open spaces.	Whole site	During detailed design and construction	N/A – No custom paving was conducted during the reporting month.
S4.7.2	S4	<i>In-situ Tree Protection - Quarterly inspection</i> Quarterly Inspection of affected and newly planted trees by an experienced and appropriately trained arborist or horticulturist using Form 1 – Tree Group Inspection Form and Form 2 – Tree Risk Assessment Form developed by Development Bureau (http://www.trees.gov.hk/en/doc/TRAGuideline_July2010version_combine.pdf) or a form designed by a tree expert and approved by Tree Management Office for a period of 12 months after construction.	Whole site	During post construction and operation	N/A – The quarterly inspection will be conducted at later stage.
<i>Noise</i>					
S5.9	-	The following site practices should be followed during the construction of the Project: <ul style="list-style-type: none"> • Only well-maintained plant will be operated on-site and plant will be serviced regularly during the construction phase; • Silencers or mufflers on construction equipment will be utilised and will be properly maintained during the construction phase; • Mobile plant, if any, will be sited as far away from NSRs as possible; 	Whole Site	During construction	√

EIA Ref.	EM&A Ref.	Recommended Mitigation Measures	Location	When to Implement the Measure	Status
		<ul style="list-style-type: none"> Machines and plant (such as trucks) that may be in intermittent use will be shut down between work periods or will be throttled down to a minimum; Plant known to emit noise strongly in one direction will, wherever possible, be orientated so that the noise is directed away from the nearby NSRs; and Material stockpiles and other structures will be effectively utilised, wherever practicable, in screening noise from on-site construction activities. 			
S5.9	-	Noise insulating sheet would be adopted for certain PME (eg drill rig, excavator for demolition of existing structures, etc). The noise insulating sheet should be deployed such that there would be no opening or gaps on the joints.	Whole Site	During construction	√
S5.9	-	Use temporary noise barriers to mitigate the noise impact arising from the construction works, particularly for low-rise NSRs. Movable noise barriers of 3 m in height with skid footing should be used and located within a few metres of stationary plant and mobile plant such that the line of sight to the NSR is blocked by the barriers. The length of the barrier should be at least five times greater than its height. The noise barrier material should have a superficial surface density of at least 7 kg m ⁻² and have no openings or gaps.	Whole Site	During construction	√
S5.9	-	Use quiet PME as far as practicable to mitigate the construction noise impact.	Whole Site	During construction	√
S5.9	-	Scheduling of construction activities with identified grouping of PMEs.	Whole Site	During construction	√
S5.11	S5	Weekly noise monitoring will be undertaken at the representative NSRs N2 Ho Fook Building and N5 Chancery House. Monthly site audits will be conducted to ensure that the recommended mitigation measures are properly implemented during the construction stage.	Whole Site	During construction	√
<i>Air Quality</i>					
S6.8.1	-	Dust control measures stipulated in the <i>Air Pollution Control (Construction Dust) Regulation</i> will be implemented during the construction phase to control the potential fugitive dust emissions.	Whole Site	During construction	√

EIA Ref.	EM&A Ref.	Recommended Mitigation Measures	Location	When to Implement the Measure	Status
S6.8.1	-	In particular: Temporary stockpiles of dusty materials will be either covered entirely by impervious sheets; placed in an area sheltered on the top and three sides; or sprayed with water to maintain the entire surface wet at all the time.	Whole Site	During construction	√
S6.8.1	-	Impervious sheet will be provided for skip hoist for material transport.	Whole Site	During construction	√
S6.8.1	-	Vehicle washing facilities will be provided at the designated vehicle exit points.	Whole Site	During construction	√
S6.8.1	-	Every vehicle will be washed to remove any dusty materials from its chassis and wheels immediately before leaving the worksite.	Whole Site	During construction	√
S6.8.1	-	Road sections between vehicle-wash areas and vehicular entrances will be paved.	Whole Site	During construction	√
S6.8.1	-	The load carried by the trucks will be covered entirely to ensure no dust emission from the vehicles.	Whole Site	During construction	√
S6.8.1	-	Hoarding of not less than 2.4m high from ground level will be provided along the Project Site boundary adjoining a road where the new buildings (Old Bailey Wing and Arbuthnot Wing) will be constructed.	Whole Site	During construction	√
S6.8.1	-	Stockpiles of more than 20 bags of cement, dry pulverised fuel ash and dusty construction materials will be covered entirely by impervious sheeting sheltered on top and 3-sides.	Whole Site	During construction	√
S6.8.1	-	An effective dust screen will be provided to enclose scaffolding, if required, from the ground floor level of building for construction of superstructure of the new buildings.	Whole Site	During construction	√
S6.8.1	-	Impervious dust screen or sheeting will be implemented for demolition of structures and renovation of outer surfaces of structures that abuts or fronts open area accessible to the public to no less than 1m higher than the highest level of the structure being demolished.	Whole Site	During construction	√
S6.8.1	-	The area at which demolition work takes place will be sprayed with water or dust suppression chemical immediately prior to, during and immediately after the demolition activity.	Area for Demolition Work	During construction	√

EIA Ref.	EM&A Ref.	Recommended Mitigation Measures	Location	When to Implement the Measure	Status
S6.8.1	-	ULSD will be used for all construction plant on-site.	Whole Site	During construction	√
S6.8.1	-	The engine of the construction equipment or trucks during idling will be switched off.	Whole Site	During construction	√
S6.8.1	-	Site practices such as regular maintenance and checking of construction equipment deployed on-site will be conducted to avoid any black smoke emissions and to minimise gaseous emissions.	Whole Site	During construction	N/A – Not observed.
S6.10	S3.2	Monthly environmental site audits to ensure that appropriate dust control measures are properly implemented and good construction site practices are adopted throughout the construction period.	Whole Site	During construction	√
<i>Water Quality</i>					
S7.6	-	Channels, earth bunds or sand bag barriers will be provided on site to direct stormwater to silt removal facilities. The design of silt removal facilities will make reference to the guidelines in <i>Appendix A1 of ProPECC PN 1/94</i> . All drainage facilities and erosion and sediment control structures will be inspected on a regular basis and maintained to confirm proper and efficient operation at all times and particularly during rainstorms. Deposited silt and grit will be removed regularly.	Whole Site	During construction	√
S7.6	-	All drainage facilities and erosion and sediment control structures will be regularly inspected and maintained to ensure proper and efficient operation at all times and particularly following rainstorms. Deposited silt and grit will be removed regularly and disposed of.	Whole Site	During construction	N/A – Not observed.
S7.6	-	Measures will be taken to reduce the ingress of stormwater into excavation areas. If the excavation of the concrete foundation is to be carried out in wet season, they will be dug and backfilled in short sections wherever practicable. Water pumped out from trenches or foundation excavations will be discharged into stormwater drains via silt removal facilities.	Whole Site	During construction	N/A – Not observed.
S7.6	-	Open stockpiles of excavated and demolition materials will be covered with tarpaulin or similar fabric during rainstorms. Measures will be taken to prevent the washing away of residues, chemicals or debris into any drainage system.	Whole Site	During construction	√

EIA Ref.	EM&A Ref.	Recommended Mitigation Measures	Location	When to Implement the Measure	Status
S7.6	-	Manholes (including newly constructed ones) will always be adequately covered and temporarily sealed so as to prevent silt, construction materials or debris being washed into the drainage system.	Whole Site	During construction	N/A – Not observed.
S7.6	-	Precautions will be taken when a rainstorm is imminent or forecasted, and actions to be taken during or after rainstorms are summarised in Appendix A2 of <i>ProPECC PN 1/94</i> . Particular attention will be paid to the control of silty surface runoff during storm events.	Whole Site	During construction	N/A – Not observed.
S7.6	-	All temporary and permanent drainage pipes and culverts provided to facilitate runoff discharge will be adequately designed for the controlled release of stormwater flows. All sediment traps will be regularly cleaned and maintained. The temporary diverted drainage will be reinstated to the original condition when the construction work has finished or the temporary diversion is no longer required.	Whole Site	During construction	N/A – Not observed.
S7.6	-	Vehicle and plant servicing areas, vehicle washing bays and lubrication bays will, as far as possible, be located within roofed areas. The drainage in these covered areas will be connected to foul sewers via a petrol interceptor.	Whole Site	During construction	N/A – Not observed.
S7.6	-	Oil leakage or spillage will be contained and cleaned up immediately. Waste oil will be collected and stored for recycling or disposal.	Whole Site	During construction	N/A – Not observed.
S7.6	-	Waste streams classifiable as chemical wastes will be properly stored, collected and treated.	Whole Site	During construction	√
S7.6	-	All fuel tanks and chemical storage areas will be provided with locks and be sited on paved areas.	Whole Site	During construction	√
S7.6	-	The storage areas will be surrounded by bunds with a capacity equal to 110% of the storage capacity of the largest tank to prevent spilled oil, fuel and chemicals from reaching the receiving waters.	Whole Site	During construction	√
S7.6	-	The Contractors will prepare guidelines and procedures for immediate clean-up actions following any spillages of oil, fuel or chemicals.	Whole Site	During construction	√

EIA Ref.	EM&A Ref.	Recommended Mitigation Measures	Location	When to Implement the Measure	Status
S7.6	-	Surface runoff from bunded areas will pass through oil/grease traps prior to discharge to the stormwater system	Whole Site	During construction	N/A – Not observed.
S7.6	-	The stormwater discharge from the site will be monitored as part of the routine monitoring under the WPCO licence, if applicable.	Whole Site	During construction	N/A – Not observed.
S7.6	-	The existing toilet facilities of the CPS will be available to the construction workforce. The sewage will be discharged to the public sewer.	Whole Site	During construction	√
S7.8	S5.2	Monthly site audits of the works areas will be carried out during the construction phase to monitor the environmental performance of the Project and to enable prompt actions to rectify any malpractice which may give rise to water pollution problem.	Whole Site	During construction	√
<i>Waste Management</i>					
S8.5	S6.3.1 & Table 6.1	<u>General</u> The Contractor shall apply for and obtain all the necessary waste disposal permits or licences are obtained prior to the commencement of the construction works.	Whole Site	During construction	√
S8.5	-	<u>Management of Waste Disposal</u> The construction contractor will open a billing account with the EPD. Every construction waste or public fill load to be transferred to the Government waste disposal facilities such as public fill reception facilities, sorting facilities, landfills will require a valid “chit” which contains the information of the account holder to facilitate waste transaction recording and billing to the waste producer.	Whole Site	During construction	√
S8.5	S6.2	A trip-ticket system will also be established to monitor the disposal of construction waste at landfill and to control fly-tipping. The trip-ticket system will be included as one of the contractual requirements and implemented by the contractor.	Whole Site	During construction	√

EIA Ref.	EM&A Ref.	Recommended Mitigation Measures	Location	When to Implement the Measure	Status
S8.5	S6 & Table 6.1	A recording system for the amount of wastes generated /recycled and disposed of will be established during the construction phase.	Whole Site	During construction	√
S8.5	S6.3	<u>Reduction of Construction Waste Generation</u> C&D material will be segregated on-site into public fill and construction waste and stored in different containers or skips to facilitate reuse of the public fill and proper disposal of the construction waste. Specific areas of the work site will be designated for such segregation and storage if immediate use is not practicable.	Whole Site	During construction	√
S8.5	S6	<u>Chemical Waste</u> The contractor will register as a chemical waste producer with the EPD.	Whole Site	During construction and operation	√
S8.5	S6	Containers used for storage of chemical waste shall: <ul style="list-style-type: none"> • Be suitable for the substance they are holding, resistant to corrosion, maintained in a good condition, and securely closed; • Have a capacity of less than 450 L unless the specifications have been approved by the EPD; and • Display a label in English and Chinese in accordance with instructions prescribed in <i>Schedule 2 of the Regulations</i>. 	Whole Site	During construction and operation	√
S8.5	S6	Storage areas for chemical waste shall: <ul style="list-style-type: none"> • Be clearly labelled and used solely for the storage of chemical waste; • Be enclosed on at least 3 sides; • Have an impermeable floor and bunding, of capacity to accommodate 110% of the volume of the largest container or 20% by volume of the chemical waste stored in that area, whichever is the greatest; • Have adequate ventilation; • Be covered to prevent rainfall entering (water collected within the bund must be tested and disposed of as chemical waste, if necessary); and • Be arranged so that incompatible materials are appropriately separated. 	Whole Site	During construction and operation	√

EIA Ref.	EM&A Ref.	Recommended Mitigation Measures	Location	When to Implement the Measure	Status
S8.5	S6	A licensed contractor shall be employed to collect chemical waste for delivery to a licensed treatment facility.	Chemical Waste Treatment Centre at Tsing Yi	During construction and operation	√
S8.5	S6 & Table 6.1	<u>General Refuse</u> General refuse will be stored in enclosed bins separately from construction and chemical wastes. The general refuse will be delivered to the transfer station, separately from construction and chemical wastes, on a daily basis to reduce odour, pest and litter impacts.	Whole site	During construction	√
S8.5	S6	Recycling bins will be provided at strategic locations to facilitate recovery of aluminium can and waste paper from the Site. Materials recovered will be sold for recycling.	Whole site	During construction and operation	√
S8.5	S6	<u>Staff Training</u> At the commencement of the construction works, training will be provided to workers on the concepts of site cleanliness and on appropriate waste management procedures, including waste reduction, reuse and recycling.	Whole site	Commencement of construction	√
S8.7	S6.1 & 6.3	Monthly audits of the waste management practices will be carried out during the construction phases to determine if wastes are being managed in accordance with the recommended good site practices. The audits will examine all aspects of waste management including waste generation, storage, recycling, transport and disposal.	Whole site	During construction	√

Remark:

- √ Compliance of Mitigation Measures
- <> Compliance of Mitigation but need improvement
- x Non-compliance of Mitigation Measures
- ▲ Non-compliance of Mitigation Measures but rectified by Gammon Construction Ltd
- △ Deficiency of Mitigation Measures but rectified by Gammon Construction Ltd
- N/A Not Applicable in Reporting Period

Annex H

Noise Monitoring Results

Annex H Noise Monitoring Results

Daytime Noise Monitoring Results

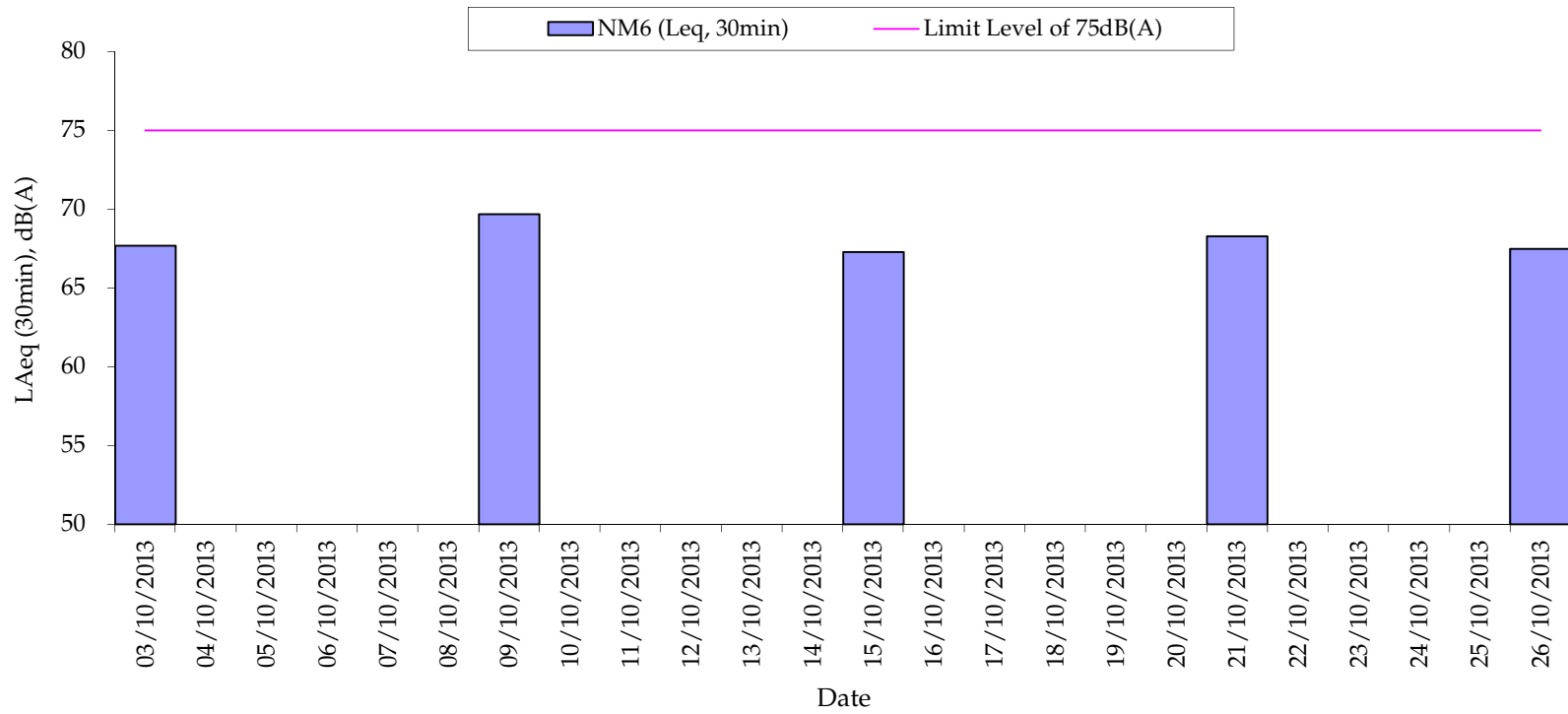
NM6 Chancery Mansion

Date	Start Time	End Time	Weather	Noise level (dB(A)), 30 min			Major Construction Noise Source(s) Observed	Other Noise Source(s) Observed	Remarks	Wind Speed (m/s)	Noise Meter Model / ID	Calibrator Model / ID
				Leq	L10	L90						
03-Oct-13	10:20	10:50	Sunny	67.7	69.2	63.9	Crawler crane, interior fitting (within the project site)	Traffic Noise	-	0.3	RION- NL31 (S/N 00410224)	RION - NC73 (S/N 10786708)
09-Oct-13	15:03	15:33	Sunny	69.7	72.7	66.1	Crawler crane (within the project site)	Traffic Noise	-	0.5	RION- NL31 (S/N 00410224)	RION - NC73 (S/N 10786708)
15-Oct-13	9:40	10:10	Sunny	67.3	68.8	64.8	Crawler crane (within the project site)	Traffic Noise	-	0.5	RION- NL31 (S/N 00410224)	RION - NC73 (S/N 10786708)
21-Oct-13	14:55	15:25	Sunny	68.3	69.6	67.0	Crawler crane (within the project site)	Traffic Noise	-	0.5	RION- NL31 (S/N 00410224)	RION - NC73 (S/N 10786708)
26-Oct-13	9:40	10:10	Sunny	67.5	68.9	64.4	Crawler crane, interior fitting (within the project site)	Traffic Noise	-	0.8	RION- NL31 (S/N 00410224)	RION - NC73 (S/N 10786708)
				Min.	67.3							
				Max.	69.7							

NM2 Ho Fook Building

Date	Start Time	End Time	Weather	Noise level (dB(A)), 30 min			Major Construction Noise Source(s) Observed	Other Noise Source(s) Observed	Remarks	Wind Speed (m/s)	Noise Meter Model / ID	Calibrator Model / ID
				Leq	L10	L90						
03-Oct-13	9:42	10:12	Sunny	70.2	72.4	66.5	Crawler crane, interior fitting, welding (within the project site)	Traffic noise	-	0.3	RION- NL31 (S/N 00410224)	RION - NC73 (S/N 10786708)
09-Oct-13	13:05	13:35	Sunny	67.6	69.9	65.4	Crawler crane, interior fitting (within the project site)	Traffic Noise	-	0.3	RION- NL31 (S/N 00410224)	RION - NC73 (S/N 10786708)
15-Oct-13	10:17	10:47	Sunny	68.3	69.9	66.0	Crawler crane, interior fitting (within the project site)	Traffic Noise	-	0.5	RION- NL31 (S/N 00410224)	RION - NC73 (S/N 10786708)
21-Oct-13	14:15	14:45	Sunny	69.8	71.3	66.6	Crawler crane, interior fitting (within the project site)	Traffic Noise	-	0.5	RION- NL31 (S/N 00410224)	RION - NC73 (S/N 10786708)
26-Oct-13	10:17	10:47	Sunny	68.3	69.8	66.0	Crawler crane, interior fitting (within the project site)	Traffic Noise	-	0.7	RION- NL31 (S/N 00410224)	RION - NC73 (S/N 10786708)
				Min.	67.6							
				Max.	70.2							

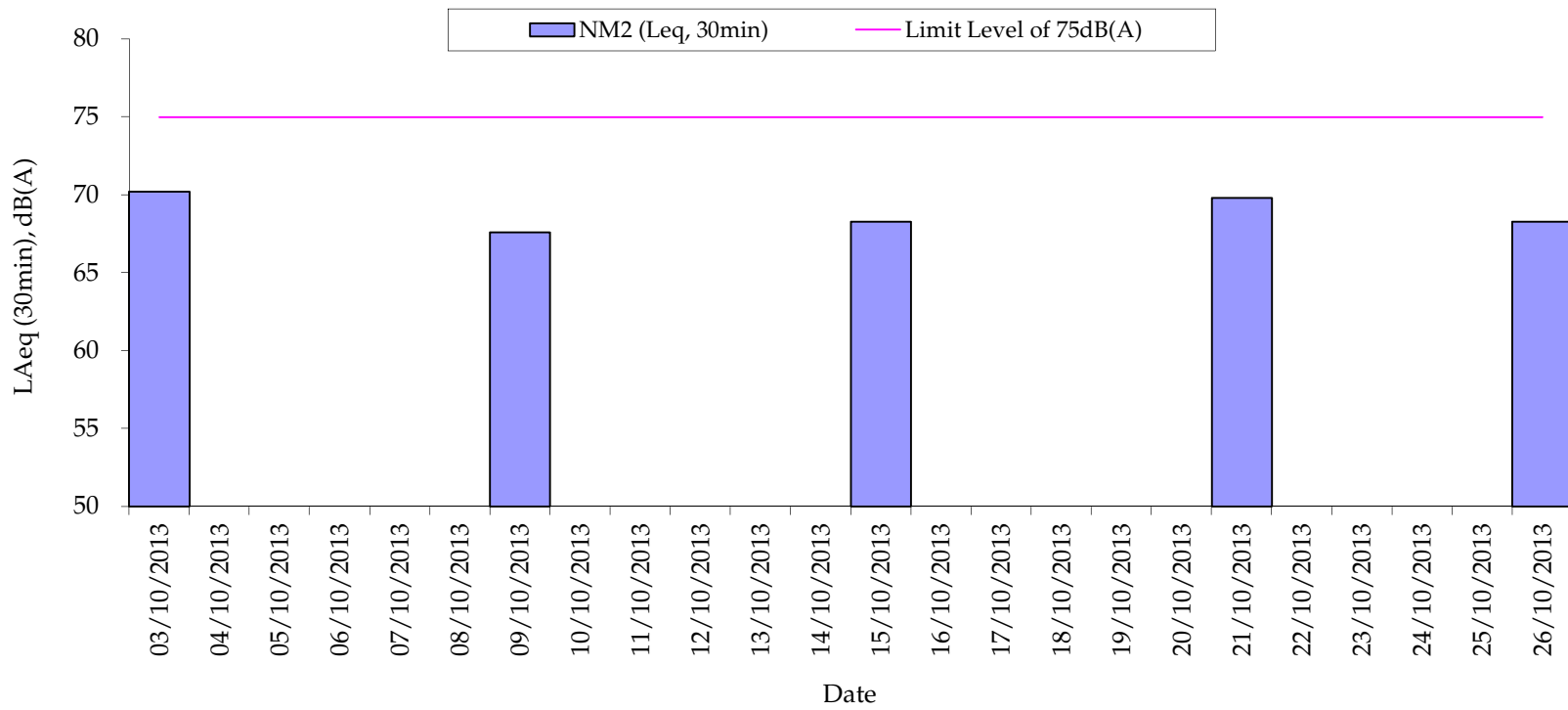
Normal Weekdays Noise Monitoring Results at NM6 - Chancery Mansion (Leq, 30min)



Remark:

- 75dB(A) was adopted as the Limit Level during normal weekdays in the reporting period

Normal Weekdays Noise Monitoring Results at NM2 - Ho Fook Building (Leq, 30min)



Remark:

- 75dB(A) was adopted as the Limit Level during normal weekdays in the reporting period

Annex I

Construction Programme for the Project

Activity ID	Activity Description	Duration in Days	2011		2012		2013		2014		2015		2016																																								
			J	A	S	O	N	D	J	F	M	A	M	J	J	A	S	O	N	D	J	F	M	A	M	J	J	A	S	O	N	D	J	F	M	A	M	J	J	A	S	O	N	D	J	F	M	A	M	J	J	A	S
GENERAL																																																					
S110	PRECONSTRUCTION WORKS	592	PRECONSTRUCTION WORKS																																																		
EXISTING BUILDINGS																																																					
160010	BLOCK 16 WORKSHOP & LAUNDRY (DEMOLITION WORKS)	198	BLOCK 16 WORKSHOP & LAUNDRY (DEMOLITION WORKS)																																																		
180010	BLOCK 18/14 ANNEX/BLDG F/G/H/ (DEMOLITION WORKS)	149	BLOCK 18/14 ANNEX/BLDG F/G/H/ (DEMOLITION WORKS)																																																		
080010	BLOCK 08 ABLUTIONS BLOCK	731	BLOCK 08 ABLUTIONS BLOCK																																																		
170005	BLOCK 17 F HALL	593	BLOCK 17 F HALL																																																		
010005	BLOCK 01 POLICE HEADQUARTERS BLOCK	626	BLOCK 01 POLICE HEADQUARTERS BLOCK																																																		
140005	BLOCK 14 D HALL	645	BLOCK 14 D HALL																																																		
120010	BLOCK 12 B HALL	341	BLOCK 12 B HALL																																																		
110010	BLOCK 11 A HALL	311	BLOCK 11 A HALL																																																		
100010	BLOCK 10 SUPERINTENDENT'S HOUSE	517	BLOCK 10 SUPERINTENDENT'S HOUSE																																																		
130010	BLOCK 13 C HALL	517	BLOCK 13 C HALL																																																		
060005	BLOCK 06 MARRIED SERGEANTS' QUARTERS	223	BLOCK 06 MARRIED SERGEANTS' QUARTERS																																																		
070005	BLOCK 07 SINGLE INSPECTORS' QUARTERS	225	BLOCK 07 SINGLE INSPECTORS' QUARTERS																																																		
030005	BLOCK 03 BARRACK BLOCK	440	BLOCK 03 BARRACK BLOCK																																																		
020005	BLOCK 02 ARMOURY	425	BLOCK 02 ARMOURY																																																		
090005	BLOCK 09 CENTRAL MAGISTRACY	425	BLOCK 09 CENTRAL MAGISTRACY																																																		
150010	BLOCK 15 E HALL	304	BLOCK 15 E HALL																																																		
040005	BLOCK 04 MARRIED INSPECTORS' QUARTERS	349	BLOCK 04 MARRIED INSPECTORS' QUARTERS																																																		
190005	BLOCK 19 BAUHINIA HOUSE	277	BLOCK 19 BAUHINIA HOUSE																																																		
050002	BLOCK 05 (DEMOLITION WORKS)	119	BLOCK 05 (DEMOLITION WORKS)																																																		
OTHER WORKS																																																					
253110	REVTMENT WALL / U/G UTILITIES / ROAD WORKS	679	REVTMENT WALL / U/G UTILITIES / ROAD WORKS																																																		
NEW BUILDINGS																																																					
S200	OBW OLD BAILEY WING	1,097	OBW OLD BAILEY WING																																																		
S300	AW ARBUTHNOT WING	1,056	AW ARBUTHNOT WING																																																		
BASEMENT PLANTROOM AND SERVICES TRENCH																																																					
202005	BASEMENT PLANTROOM / SERVICES TRENCH	588	BASEMENT PLANTROOM / SERVICES TRENCH																																																		
NEW FOOTBRIDGE																																																					
2300125	PROPOSED FOOTBRIDGE	699	PROPOSED FOOTBRIDGE																																																		



?Primavera Systems, Inc.

T76M

**CENTRAL POLICE STATION CONSERVATION AND REVITALIZATION
(MANAGEMENT CONTRACT)
CONSTRUCTION PROGRAMME
SUMMARY PROGRAMME**

Sheet 1 of 1

Date		Revision		Checked	Approved
13NOV12	for EPD				
04MAR13	revised				

GCL / P / J3416 /SUM/CP01

Annex J

Tree Inspection Reports



R11767
 欣榮 (香港) 環境管理有限公司

Yan Wing (Hong Kong) Environment Management Limited

香港 新界 沙頭角 新樓街 15 號 二樓
 No. 15, San Lau Street, 1/F., Sha Tau Kok, N.T., Hong Kong

RECEIVED

- 1 NOV 2013

通信地址 (Mail Address) : 上水郵局信箱 八八九 號 (Sheung Shui Post Office Box 889)

Tel: 9776 1987, 2486 2317 Fax: 2482 4667 E-mail: yanwinghk@netvigator.com

Our Ref. : YW/TP/GAMMON/2013/10/1

30th October 2013

Gammon Construction Limited
 28/F Devon House, TaiKoo Place 979 King's Road
 Hong Kong

Tel. 2516 8823
 Fax.2516 6260

Attn : Mr. Cliff C.H. LEUNG, Mr. Ariel LUI

Dear Sirs,

**Summary of Monthly Inspection Report for the Six Existing Trees
 at Central Police Station Compound for October 2013
 (Contract Ref. : J3416/400.4/D00025)**

Tree No.	Botanical Name	Date of Inspection	Overall Health Condition Good/Fair/Poor	Remarks
Tree-5	<i>Mangifera indica</i> 芒果	2 nd Oct. 2013	Good	N.F.A.
Tree-6	<i>Aleurites moluccana</i> 石栗	2 nd Oct. 2013	Fair	N.F.A.
Tree-7	<i>Aleurites moluccana</i> 石栗	2 nd Oct. 2013	Fair	N.F.A.
Tree-8	<i>Plumeria rubra</i> 紅雞蛋花	2 nd Oct. 2013	Fair	N.F.A.
Tree-9	<i>Araucaria cunninghamia</i> 花旗杉	2 nd Oct. 2013	Fair	N.F.A.
Tree-11	<i>Dracaena marginata</i> 馬尾鐵	2 nd Oct. 2013	Fair	N.F.A.



Tree Inspection Reports and Tree Group Inspection Form (Form 1) are attached for your reference and record, please.

I should be much grateful if you could endorse the attached Invoice (No.1042) and fax it to my Office at 2482 4667. Thank you.

Yours faithfully

For and on behalf of
Yan Wing (HK) Environment Management Ltd.


(WONG Pak Hay)
Contract Manager



FORM 1: TREE GROUP INSPECTION FORM
表格 1: 樹群檢查表格

General Information 基本資料

Company 公司:	Gammon Construction Ltd	Name of Tree Inspection officer 巡查人員姓名:	LAU Man Chung
File Ref. 檔案編號:	YW/TP/GAMMON/2013/10/2	Name of Endorsement Officer 覆核人員姓名:	WONG Pak Hay
Date of Inspection 巡查日期:	October 2, 2013		
Project/Contract No. 合約/工程編號:	J3416/400.4/D00025		

Location Information 位置資料

Location 地點:	Central Police Station Compound	Nearby Utility Post No. 就近公用設施編號:	
Location Types 地點類別: Address: __ (multiple answers allowed) 可選多於一項	<input type="checkbox"/> Roadside 路旁 <input checked="" type="checkbox"/> Open space 空地 <input type="checkbox"/> Exhibition Centre 展覽中心 <input type="checkbox"/> View Point 觀景台 <input type="checkbox"/> Walking / nature trail 行山徑 / 自然徑 <input type="checkbox"/> Others (please specify) 其他 (請說明): _____	<input type="checkbox"/> Community Hall / Centre 社區會堂 / 中心 <input type="checkbox"/> Roadside Planter 路旁花園 <input type="checkbox"/> Rain shelter / pavilion 避雨亭 / 涼亭 <input type="checkbox"/> Sitting out area 休憩處	

General Tree Information 基本樹木資料

* Delete as appropriate 請把不合適的刪除

Main tree species in the group or minority tree species of significant size 在群組內的主要樹種或樹幹胸徑或高度或樹冠範圍較大的樹種 (Note 2)	Approx. number of trees in the relevant species or as a % of tree group 該樹種在群組內的百分比/數目*	Range of tree height (m) 該樹種高度範圍	Overall health condition 整體健康狀況 (good, fair, poor 好, 良, 差)	Overall structural condition 整體結構狀況 (good, fair, poor 好, 良, 差)	Other remarks (Any special tree condition, e.g. dying/dead, pest/disease problem and structural defects; and soil condition 其他評語 (樹木狀況例如: 凋謝/枯樹/病蟲害或結構問題; 及泥土狀況)
<i>Mangifera indica</i> 芒果	17%, 1 No.	16M	GOOD	GOOD	N.F.A.
<i>Aleurites moluccana</i> 石栗	32% 2 Nos.	10-13M	FAIR	FAIR	N.F.A.
<i>Plumeria rubra</i> 紅雞蛋花	17% 1 No.	7M	FAIR	FAIR	N.F.A.
<i>Araucaria cunninghamia</i> 花旗杉	17% 1 No.	13M	FAIR	FAIR	N.F.A.
<i>Dracaena marginata</i> 馬尾鐵	17% 1 No.	8M	FAIR	FAIR	N.F.A.

Target 目標

TARGET (people or property potentially affected by tree/branch failure) 目標 (因樹木倒塌或枝條斷裂而受影響的人或財產)
Does target exist? 目標是否存在? <input checked="" type="checkbox"/> Yes 是 <input type="checkbox"/> No 否
Can target be moved? 能否移除目標? <input type="checkbox"/> Yes 是 <input checked="" type="checkbox"/> No 否
Can the use of site be restricted? 可否限制場地的使用? <input checked="" type="checkbox"/> Yes 是 <input type="checkbox"/> No 否
Frequency of use of location 使用該地點的頻密程度: <input type="checkbox"/> Occasional use 偶爾使用 <input type="checkbox"/> Intermittent use 間歇使用 <input checked="" type="checkbox"/> Frequent use 經常使用 <input type="checkbox"/> Constant use 恆常使用

Identification of Trees for Remedial Action or Detailed Tree Risk Assessment

識別下述樹木，以便採取風險緩減措施或進行詳細樹木風險評估

Trees falling under the following criteria 樹木屬於以下任何一項或多於一項類別	Number of trees 樹木數量	Remedial action or detailed tree risk assessment 緩減措施或進行詳細樹木風險評估
(1) Trees on complaint list with structural or health problems 投訴個案中，結構或健康問題的樹木 (Note 1)	NII	
(2) Mature trees belonging to species with brittle wood structure and having unsatisfactory health or structural conditions with failure potential 屬木質脆弱品種並已達成熟期及有倒塌風險的樹木 (Note 1)	NII	
(3) Tree with major defects or health problems 有明顯缺陷或健康問題的樹木 (Note 1)	NII	
(4) Trees growing in very stressful site conditions with failure potential 生長於非常擠壓環境而有倒塌風險的樹木 (Note 1)	NII	



Signature of Tree Inspection Officer :
Signature of Endorsement Officer:

Name of Contractor

Date:

Yan Wing (HK) Environment Management Ltd.

30-10-2013



Note 1: If remedial action (such as pruning) undertaken cannot mitigate the potential risk of tree or branch failure, detailed tree risk assessment (using Form 2) should be carried out.

備註 1: 若風險緩減措施(如枝幹修剪)仍未能解決倒塌或枝條斷裂的潛在風險, 應為該樹進行詳細的樹木風險評估(表格 2)。

Note 2: Please read in conjunction with TMO's Guidelines on Tree Risk Assessment and Management Arrangement (Para. 4.3. refers.)

備註 2: 請參閱樹木管理辦事處的樹木風險評估安排及管理指引(第 4.3 節)

**Inspection Report for the 6 Existing Trees
at Central Police Station Compound
(Contract Ref. : J3416/400.4/D00025)**

I. TREE NUMBER : Tree-5 *Mangifera indica* 芒果

II. BASIC INFORMATION :

Height (m)	16m	Crown spread (m)	18m
DBH (mm)	1000mm	Overall Health Condition Good/Fair/Poor	Good
Date of Inspection	2 nd October 2013	Last Inspection Date	2 nd September 2013

III. COMMENTS :

1. Overall health condition of the tree is good.
2. Cleanliness of the planter is acceptable.
3. The site near the tree is clean and tidy.
4. The scaffold still remains at site for further renovation work.
5. A small cordon zone is newly set up to protect the tree.
6. The crown is full of green and dense leaves.
7. Construction works are in progress outside the cordon zone.
8. The site outside the cordon zone is clean and tidy.

IV. RECOMMENDATIONS :

No further action is required.

V. PHOTO RECORD :



Fig 2. Cleanliness of the planter is acceptable.



Fig. 3 The site near the tree is clean and tidy.



Fig. 4 The scaffold still remains at site for further renovation work.



Fig. 5 A small cordon zone is newly set up to protect the tree.



Fig. 6 The crown is full of green and dense leaves.



Fig. 7 Appropriate notices have been displayed in front of the door.



Fig. 8 The site outside the cordon zone is clean and tidy.



Fig. 9 Construction works are in progress outside the cordon zone.



Fig. 10 Overall view of Tree-5 during inspection on 2nd October 2013



Signature of Inspection Officer :
(Mr. LAU Man-chung, ISA CA-HK0050A)

Signature of Endorsement Officer :
(Mr. WONG Pak-hay, Contract Manager)

Name of Contractor :

Dated this :

Yan Wing (HK) Environment
Management Ltd.

30th October 2013.



**Inspection Report for the 6 Existing Trees
at Central Police Station Compound
(Contract Ref. : J3416/400.4/D00025)**

I. TREE NUMBER : Tree-6 *Aleurites moluccana* 石栗

II. BASIC INFORMATION :

Height (m)	10m	Crown spread (m)	10m
DBH (mm)	510mm	Overall Health Condition Good/Fair/Poor	Fair
Date of Inspection	2 nd October 2013	Last Inspection Date	2 nd September 2013

III. COMMENTS :

1. Overall health condition of the tree is fair.
2. Cleanliness of the planter is acceptable.
3. Several heaps of construction materials are placed near the tree.
4. The crown is full of green and dense leaves.
5. Construction works are in progress outside the cordon zone.
6. The site outside the cordon zone is clean and tidy.

IV. RECOMMENDATIONS :

1. No further action is required.

V. PHOTO RECORD :



Fig 2. Cleanliness of the planter is acceptable.



Fig. 3 Several heaps of construction materials are placed near the tree.



Fig. 4 The crown is full of green and dense leaves.

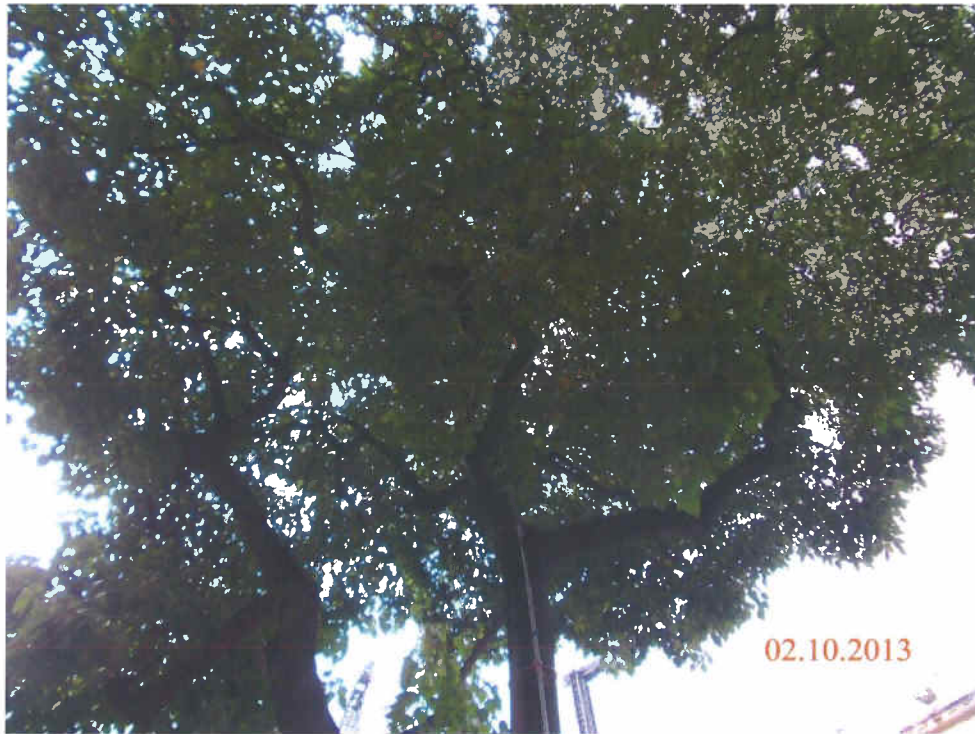


Fig. 5 Appropriate notice displays in front of the cordon zone.



Fig. 6 The site outside the cordon zone is clean and tidy.



Fig. 7 Construction works are in progress outside the cordon zone.



Fig. 8 Overall view of Tree-6 during inspection on 2nd October 2013.



Signature of Inspection Officer :
(Mr. LAU Man-chung, ISA CA-HK0050A)

Signature of Endorsement Officer :
(Mr. WONG Pak-hay, Contract Manager)

Name of Contractor :

Dated this :



Yan Wing (HK) Environment
Management Ltd.

30th October 2013



**Inspection Report for the 6 Existing Trees
at Central Police Station Compound
(Contract Ref. : J3416/400.4/D00025)**

I. TREE NUMBER : Tree-7 *Aleurites moluccana* 石栗

II. BASIC INFORMATION :

Height (m)	13m	Crown spread (m)	12m
DBH (mm)	650mm	Overall Health Condition Good/Fair/Poor	Fair
Date of Inspection	2 nd October 2013	Last Inspection Date	2 nd September 2013

III. COMMENTS :

1. Overall health condition of the tree is fair.
2. Cleanliness of the planter is acceptable.
3. Several heaps of construction materials are placed near the tree.
4. The crown is full of green and dense leaves.
5. The site outside the cordon zone is clean and tidy.
6. Construction works are in progress outside the cordon zone.

IV. RECOMMENDATIONS :

1. No further action is required.

V. PHOTO RECORD :



Fig 2. Cleanliness of the planter is acceptable.



Fig. 3 Several heaps of construction materials are placed near the tree.



Fig. 4 The crown is full of green and dense leaves.



Fig. 5 A pipe leads water to the crown for irrigation.

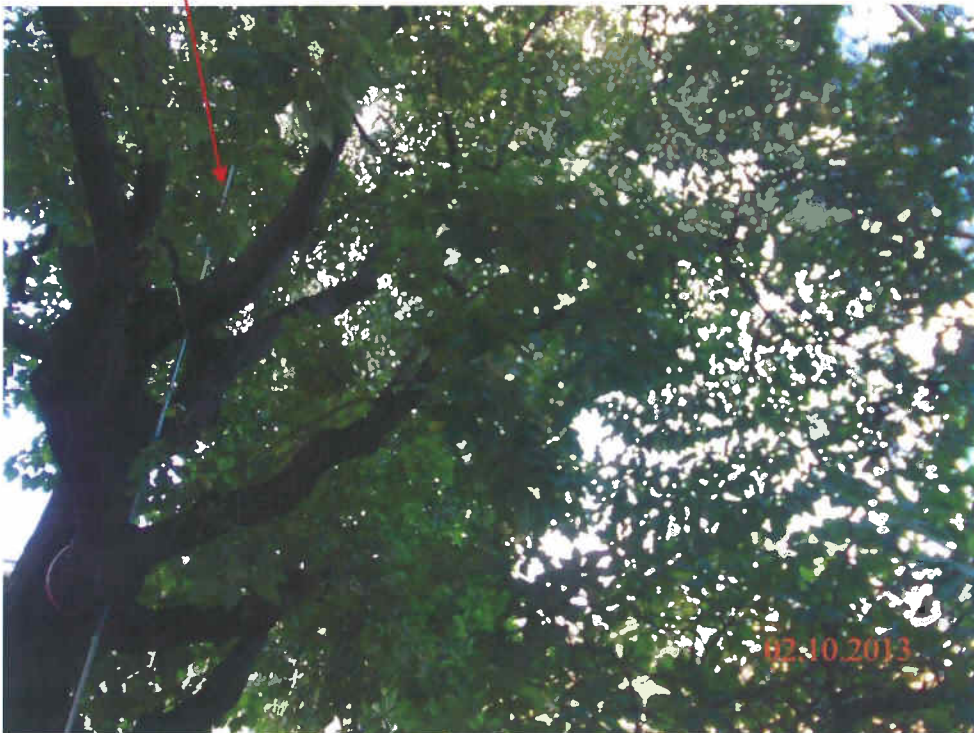


Fig. 6 The site outside the cordon zone is clean and tidy.



Fig. 7 Construction works are in progress outside the cordon zone.

Tree-7



Fig. 8 Overall view of Tree-7 during inspection on 2nd October 2013.



Signature of Inspection Officer :
(Mr. Lau Man-chung, ISA CA-HK0045A)

Signature of Endorsement Officer :
(Mr. WONG Pak-hay, Contract Manager)

Name of Contractor :

Dated this :

Yan Wing (HK) Environment
Management Ltd.

30th October 2013



**Inspection Report for the 6 Existing Trees
at Central Police Station Compound
(Contract Ref. : J3416/400.4/D00025)**

I. TREE NUMBER : Tree-8 *Plumeria rubra* 紅雞蛋花

II. BASIC INFORMATION :

Height (m)	7m	Crown spread (m)	9m
DBH (mm)	430mm	Overall Health Condition Good/Fair/Poor	Fair
Date of Inspection	2 nd October 2013	Last Inspection Date	2 nd September 2013

III. COMMENTS :

1. Overall health condition of the tree is fair.
2. Cleanliness of the planter is acceptable.
3. The site inside the cordon zone is clean and tidy.
4. The tree is full of green and dense leaves.
5. Red flowers on the crown become less.
6. The site outside the cordon zone is clean and tidy.

IV. RECOMMENDATIONS :

1. No further action is required.

V. PHOTO RECORD :

Fig 1. Tree number



Fig 2. The planter is clean and tidy.



Fig 3 The site near the tree is clean and tidy.



Fig. 4 The tree is full of green and dense leaves.



Fig. 5 Red flowers on the crown become less.



Fig. 6 Construction works are in progress outside the cordon zone.



Fig. 7 The site outside the cordon zone is clean and tidy.



Fig. 8 Overall view of Tree-8 during inspection on 2nd October 2013.



Signature of Inspection Officer :
(Mr. LAU Man-chung, ISA CA-HK0050A)

Signature of Endorsement Officer :
(Mr. WONG Pak-hay, Contract Manager)

Name of Contractor :

Dated this :





Yan Wing (HK) Environment
Management Ltd.

30th October 2013



**Inspection Report for the 6 Existing Trees
at Central Police Station Compound
(Contract Ref. : J3416/400.4/D00025)**

I. TREE NUMBER : Tree - 9 *Araucaria cunninghamia* 花旗杉

II. BASIC INFORMATION :

Height (m)	13m	Crown spread (m)	5m
DBH (mm)	230mm	Overall Health Condition Good/Fair/Poor	Fair
Date of Inspection	2 nd October 2013	Last Inspection Date	2 nd September 2013

III. COMMENTS :

1. Overall health condition of the tree is fair.
2. Cleanliness of the planter is acceptable.
3. The site near the tree is clean and tidy.
4. Sap flow has not been found again on the mid trunk.
5. Green and vigorous leaves appear on the tree.
6. The site outside the cordon zone is clean and tidy.

IV. RECOMMENDATIONS :

1. No further action is required.

V. PHOTO RECORD :



Fig 2. Cleanliness of the planter is acceptable.



Fig. 3 The site near Tree-9 is clean and tidy.



Fig. 6 A pipe leads water to the crown for irrigation.



Fig. 7 The site outside the cordon zone is clean and tidy.

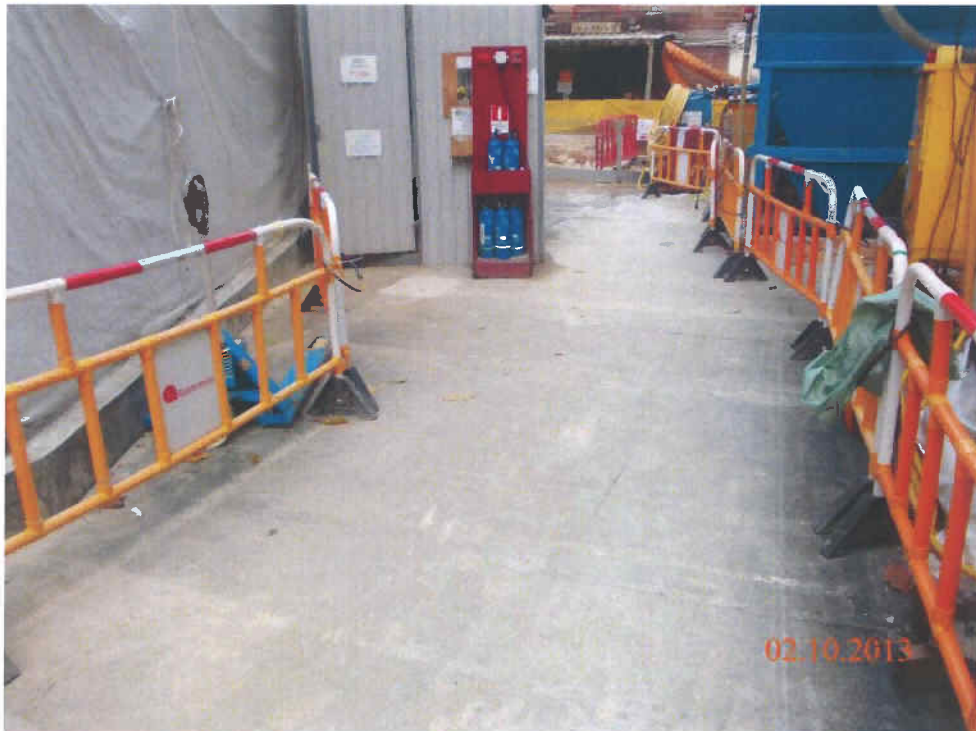
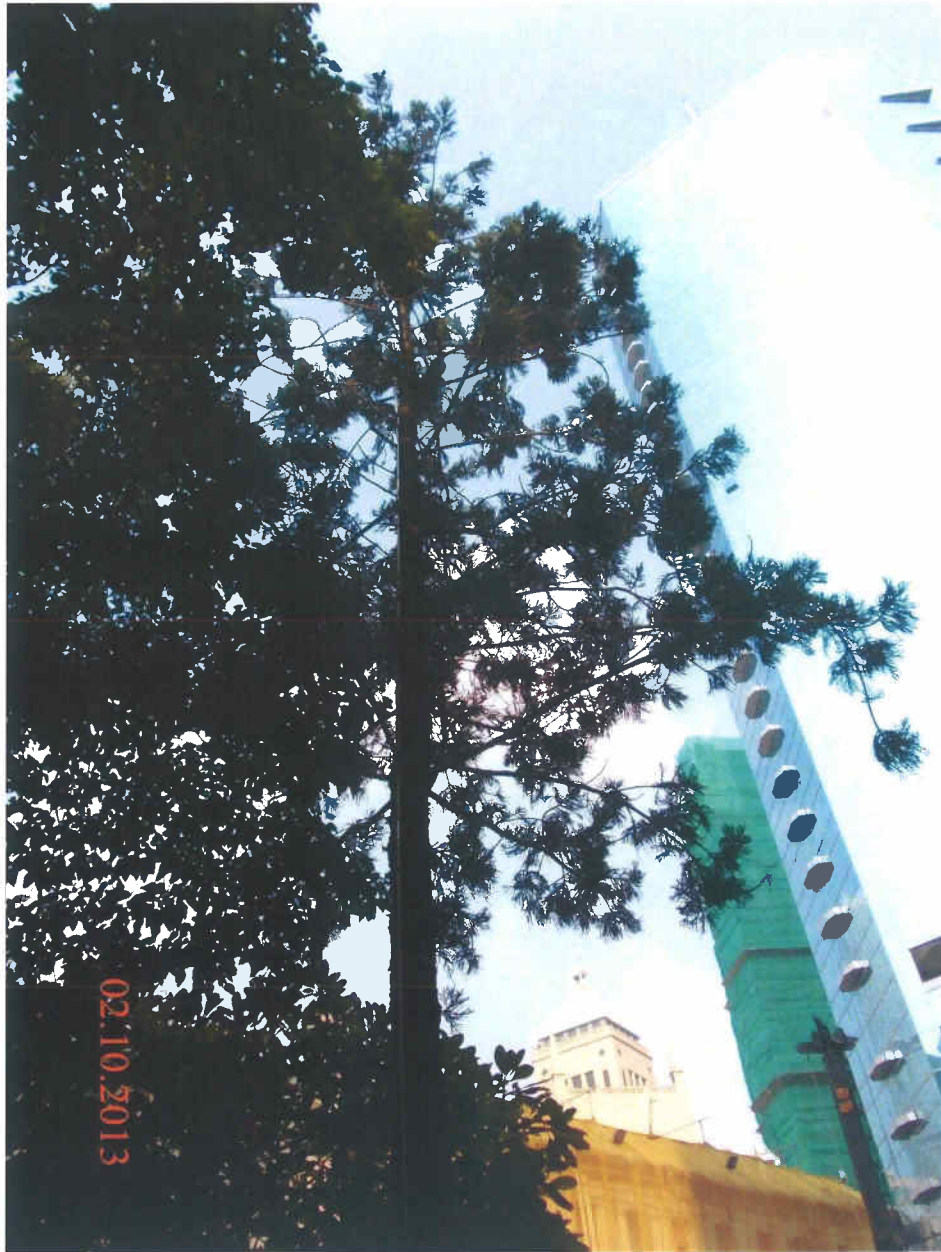


Fig. 8 Overall view of Tree-9 during inspection on 2nd October 2013.



Signature of Inspection Officer :
(Mr. LAU Man-chung, ISA CA-HK0050A)

Signature of Endorsement Officer :
(Mr. WONG Pak-hay, Contract Manager)

Name of Contractor :

Dated this :

Yan Wing (HK) Environment
Management Ltd

30th October 2013



**Inspection Report for the 6 Existing Trees
at Central Police Station Compound
(Contract Ref. : J3416/400.4/D00025)**

I. TREE NUMBER : Tree -11 *Dracaena marginata* 馬尾鐵

II. BASIC INFORMATION :

Height (m)	8m	Crown spread (m)	2m
DBH (mm)	170mm	Overall Health Condition Good/Fair/Poor	Fair
Date of Inspection	2 nd October 2013	Last Inspection Date	2 nd September 2013

III. COMMENTS :

1. Overall health condition of the tree is fair.
2. Cleanliness of the planter is acceptable.
3. Cleanliness of the site is acceptable.
4. A small cordon zone is newly set up to protect the tree.
5. The trunk has been wrapped with hessian cloth so as to get rid of damage to the tree.
6. The site outside the cordon zone is clean and tidy.

IV. RECOMMENDATIONS :

No further action is required.

V. PHOTO RECORD :



Fig. 2 Cleanliness of the planter is acceptable.



Fig. 3 Cleanliness of the site is acceptable.



Fig. 4 A small cordon zone is newly set up to protect the tree.



Fig. 5 The trunk has been wrapped with hessian cloth so as to get rid of damage to the tree.



Fig. 6 Appropriate notice displays in front of the cordon zone.



Fig. 7 The site outside the cordon zone is clean and tidy.



Fig. 8 Overall view of Tree-11 during inspection on 2nd October 2013.



Signature of Inspection Officer :
(Mr. LAU Man-chung, ISA CA-HK0050A)

Signature of Endorsement Officer :
(Mr. WONG Pak-hay, Contract Manager)

Name of Contractor :

Yan Wing (HK) Environment
Management Ltd.

Dated this :

30th October 2013



Annex K

Environmental Complaint,
Environmental Summons
and Prosecution Log

Annex K Cumulative Complaint and Summons/Prosecutions Log

Reporting Month	Number of Complaints in Reporting Month	Number of Summons/Prosecutions in Reporting Month
November 2011	0	0
December 2011	0	0
January 2012	0	0
February 2012	0	0
March 2012	4	0
April 2012	0	0
May 2012	0	0
June 2012	2	0
July 2012	1	0
August 2012	0	0
September 2012	0	0
October 2012	0	0
November 2012	2	0
December 2012	0	0
January 2013	0	0
February 2013	1	0
March 2013	1	0
April 2013	0	0
May 2013	0	0
June 2013	0	0
July 2013	0	0
August 2013	0	0
September 2013	0	0
October 2013	0	0
Overall Total	11	0

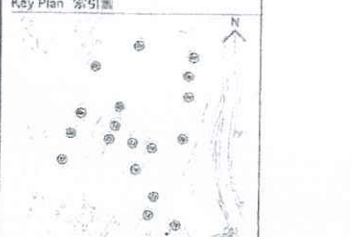
Annex L

Records of Vibration Monitoring for Piling works

Pipe pile wall, grout curtain and excavation and lateral support at Parade Ground



Plan Approved
NG Kim-shing
Chief Structural Engineer
for BUILDING AUTHORITY
- 3 MAY 2012



BD SUBMISSION
Drawing Status 製圖狀況

- The drawings and the contents herein are the copyright of the design consultant.
- 本圖紙及其內容均為設計顧問公司所有。
- No part of the drawing and the design contained herein may be reproduced without the prior written consent of the design consultant.
- 本圖紙及其內容均不得未經設計顧問公司書面同意而作任何复制或轉載。
- Do not take measurements directly from this drawing.
- 切勿直接從圖紙上量取尺寸。
- Check and verify all dimensions on site.
- 於現場核對及核實所有尺寸。
- Read this drawing in conjunction with the specifications and all other related drawings.
- 此圖紙必須與圖則及所有其他相關圖紙一併閱讀。
- Notify the relevant consultants immediately of any discrepancy found herein.
- 如發現任何不符之處，請立即通知有關顧問公司。

Client 業主:
The Tower Club Ltd Limited

Design Consultant
HERZOG & DEMEUREN

Conservation Architect
Rocco

Execution Architect / AS
ROCCO

Structural Engineer / RSE
ARUP

E & M Engineer
JRP

LEGEND

	EXISTING FRESH WATER MAIN
	EXISTING SALT WATER MAIN
	EXISTING STREET LIGHTING NO. 33458-A1
	EXISTING STREET LIGHTING CABLE
	EXISTING GAS MAIN
	EXISTING HV ELECTRICITY CABLE
	EXISTING LV ELECTRICITY CABLE
	EXISTING TELECOMMUNICATION DUCT (HUTCHINSON GLOBAL COMMUNICATIONS LIMITED)
	EXISTING STORMWATER DRAIN
	EXISTING FOUL SEWER
	PROPOSED FOUL SEWER
	SITE BOUNDARY
	EXISTING RETAINING WALL
	EXISTING DRILLHOLE WITH STANDPIPE/PIEZOMETER
	PROPOSED BUILDING SETTLEMENT POINTS/TILMETER
	PROPOSED RETAINING WALL SETTLEMENT POINTS/TILMETER
	PROPOSED INCLINOMETER TO BE BUILT IN BORED PILE WALL OR PIPE PILE WALL
	PROPOSED GROUND SETTLEMENT POINTS
	PROPOSED UTILITY MONITORING POINTS
	PROPOSED VIBRATION MONITORING POINTS
	PROPOSED ADDITIONAL DRILLHOLE

NOTES:

- UTILITIES SETTLEMENT POINTS (UT1 TO UT9) SHALL ONLY BE INSTALLED AFTER EXCAVATION PERMIT IS OBTAINED. AS ALTERNATIVE SETTLEMENT POINTS (GS18 AND GS19) MAY BE INSTALLED.
- SHOULD UT1 TO UT6 BE INSTALLED, GS18 AND GS19 SHALL NOT BE REQUIRED.
- EITHER UTILITIES SETTLEMENT MARKERS (UT1 TO UT9) OR GROUND SETTLEMENT MARKERS (GS18 AND GS19) SHALL BE INSTALLED PRIOR TO COMMENCEMENT OF OLD BAILEY WING ELS WORKS.

Project 項目
**CENTRAL POLICE STATION
CONSERVATION AND REVITALISATION
PROJECT**

Drawing Title 圖名
MONITORING LAYOUT PLAN

Scale 比例
1:3000A1

Drawn 繪圖
K.C. Lo

Checked 校核
AL

Drawing No. 圖號
00-OAP209674-C-001

Rev. 修訂
A

Doc No.: 00-OAP209674-C-001.dwg

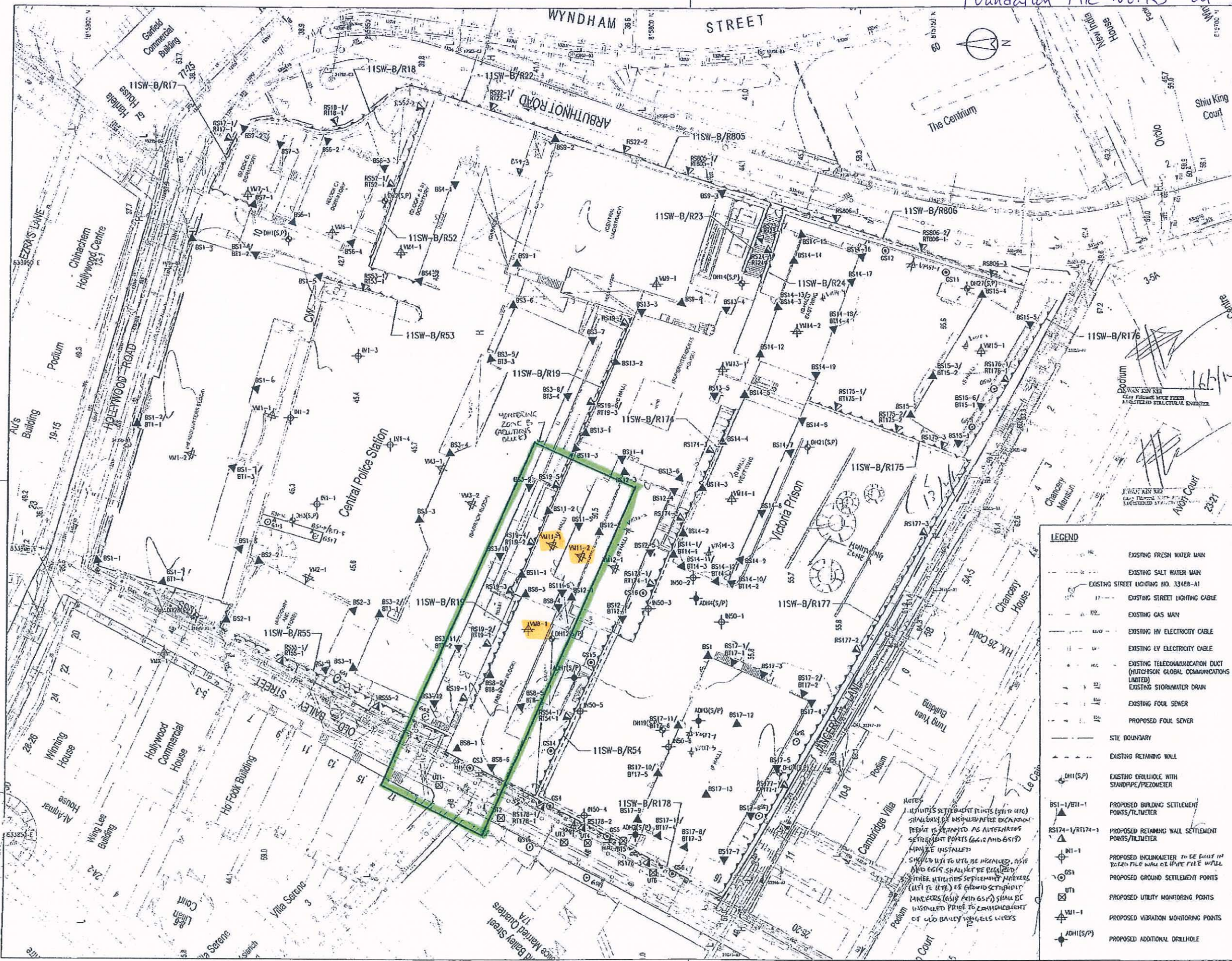


Gammon

Vibration Record of WP 107

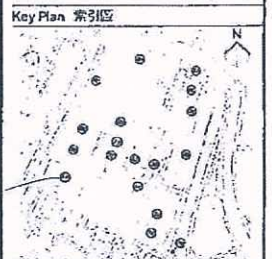
POINT	VM1-1	VM1-2	VM2-1	VM3-1	VM3-2
Date	mm/s	mm/s	mm/s	mm/s	mm/s
01-10-13	HOLIDAY				
02-10-13	0.207	0.362	0.093	0.172	0.196
03-10-13	0.178	0.156	0.267	0.091	0.106
04-10-13	0.122	0.212	0.133	0.131	0.086
05-10-13	0.208	0.151	0.181	0.230	0.367
06-10-13	SUNDAY				
07-10-13	0.143	0.200	0.128	0.157	0.150
08-10-13	0.108	0.184	0.122	0.207	0.178
09-10-13	0.160	0.239	0.132	0.484	0.145
10-10-13	0.561	0.257	0.349	0.285	0.103
11-10-13	0.093	0.194	0.132	0.103	0.228
12-10-13	0.158	0.177	0.171	0.217	0.339
13-10-13	SUNDAY				
14-10-13	HOLIDAY				
15-10-13	0.299	0.223	0.095	0.166	0.086
16-10-13	0.102	0.223	0.117	0.255	0.139
17-10-13	0.194	0.577	0.816	0.608	0.119
18-10-13	0.160	0.153	0.543	0.097	0.081
19-10-13	0.398	0.201	0.256	0.238	0.146
20-10-13	SUNDAY				
21-10-13	0.445	0.280	0.288	0.936	0.164
22-10-13	0.237	0.221	0.239	0.137	0.377
23-10-13	0.272	0.216	0.087	0.106	0.377
24-10-13	0.121	0.166	0.091	0.108	0.279
25-10-13	0.122	0.256	0.270	0.093	0.177
26-10-13	0.234	0.564	0.240	0.339	0.188
27-10-13	SUNDAY				
28-10-13	0.580	0.122	0.481	0.243	0.319
29-10-13	0.819	0.357	0.671	0.137	0.222
30-10-13	0.207	0.415	0.774	0.358	0.127
31-10-13	0.403	0.446	0.276	0.192	0.230

Foundation Pile Works at Block 8.



BD Ref No. 17-2024-002	
BD Ref No. 20-2024-002	
Revision/Description/Date/By	
No. Rev. Description/Date/By	
1 - ED SUBMISSION	12/11 JS

Plan Approved
 NG Kingling
 Chief Structural Engineer
 for BUILDING AUTHORITY
 20 FEB 2012



BD SUBMISSION
 Drawing Status 製圖狀況

This drawing and the contents herein are the copyright of relevant consultants.
 本圖紙及內容均為有關顧問公司的版權。
 No part of the drawing and the design contained herein may be reproduced without the prior written consent of relevant consultants.
 本圖紙及內容均不得未經有關顧問公司之書面同意而作任何复制或轉載。
 Do not take measurements directly from this drawing.
 切勿直接從此圖紙量取尺寸。
 Check and verify all dimensions on site.
 於現場檢查及核實所有尺寸。
 Read this drawing in conjunction with the specifications and all other related drawings.
 此圖紙須與規格書及其他有關圖紙一併閱讀。
 Notify the relevant consultants immediately of any discrepancy found between the drawings.
 如發現圖紙間有矛盾之處，請立即通知有關顧問公司。

Client 業主

 Design Consultant
HERZOG & DEMEUREN
 Conservation Architect
 Executive Architect
ROCCO
 Structural Engineer / RSE
ARUP
 Project 項目
**CENTRAL POLICE STATION
 CONSERVATION AND REVITALISATION
 PROJECT**

Drawing Title 圖名
MONITORING LAYOUT PLAN

Scale 比例
 1:3000 A1
 Drawing No. 圖號
00-OAP209674-G-001

LEGEND

	EXISTING FRESH WATER MAIN
	EXISTING SALT WATER MAIN
	EXISTING STREET LIGHTING NO. 33428-A1
	EXISTING STREET LIGHTING CABLE
	EXISTING GAS MAIN
	EXISTING HV ELECTRICITY CABLE
	EXISTING LV ELECTRICITY CABLE
	EXISTING TELECOMMUNICATION DUCT (FUTURION GLOBAL COMMUNICATIONS LIMITED)
	EXISTING STORMWATER DRAIN
	EXISTING FOUL SEWER
	PROPOSED FOUL SEWER
	SITE BOUNDARY
	EXISTING RETAINING WALL
	EXISTING DRILLHOLE WITH STANDPIPE/PNEUMETER
	PROPOSED BUILDING SETTLEMENT POINTS/TILTMETER
	PROPOSED RETAINING WALL SETTLEMENT POINTS/TILTMETER
	PROPOSED INCLINOMETER TO BE INSTALLED IN TRENCH FILE WALL OR PIPE FILE WALL
	PROPOSED GROUND SETTLEMENT POINTS
	PROPOSED UTILITY MONITORING POINTS
	PROPOSED VIBRATION MONITORING POINTS
	PROPOSED ADDITIONAL DRILLHOLE

NOTES
 1. ALL UTILITY SETTLEMENT POINTS (WITH OR WITHOUT STANDPIPE) SHALL BE INSTALLED AFTER EXCAVATION PERMIT IS OBTAINED AS ALTERNATIVE SETTLEMENT POINTS (E.G. BS15 AND BS16) MAY BE INSTALLED.
 2. STANDPIPE SHALL BE INSTALLED, BS15 AND BS16 SHALL NOT BE REQUIRED.
 3. UTILITY SETTLEMENT POINTS (WITH OR WITHOUT STANDPIPE) SHALL BE INSTALLED PRIOR TO COMMENCEMENT OF PILE WORKS.

Monitoring Check Pts.	Trigger Levels		
	Alert level	Alarm level	Action level
Vibrating Monitoring	2mm/s	2.5mm/s	3mm/s
#Vibration at largest span of highest Structural level	5.0mm/s	6.0mm/s	7.5mm/s

Vibration Record

Project Title: Central Police Station Conservation & Revitalization Project No: WP201 22-Sep-2013 to 5-Oct-2013

POINT		VM8-1	VM11-1#	VM11-2						
DATE	PD/(m)	mm/s	mm/s	mm/s						
23-Apr-2012 (Initial)		0.212	0.087	0.116						
22-Sep-2013					Sunday					
23-Sep-2013		0.33	0.26	0.16						
24-Sep-2013		0.15	1.27	0.14						
25-Sep-2013		0.22	0.47	0.55						
26-Sep-2013		0.38	0.25	1.90						
27-Sep-2013		0.34	0.14	0.21						
28-Sep-2013		0.34	0.71	0.29						
29-Sep-2013					Sunday					
30-Sep-2013		0.12	0.21	0.25						
1-Oct-2013					Punlic Holiday					
2-Oct-2013		0.21	0.28	0.18						
3-Oct-2013		0.26	0.50	0.32						
4-Oct-2013		0.15	0.20	0.37						
5-Oct-2013		0.48	0.23	0.47						

Monitoring Check Pts.	Trigger Levels		
	Alert level	Alarm level	Action level
Vibrating Monitoring	2mm/s	2.5mm/s	3mm/s
#Vibration at largest span of highest Structural level	5.0mm/s	6.0mm/s	7.5mm/s

Vibration Record

Project Title: Central Police Station Conservation & Revitalization Project No: WP201 6-Oct-2013 to 19-Oct-2013

POINT		VM8-1	VM11-1#	VM11-2						
DATE	PD/(m)	mm/s	mm/s	mm/s						
23-Apr-2012 (Initial)		0.212	0.087	0.116						
06-Oct-2013		Sunday								
7-Oct-2013		0.12	0.21	0.25						
8-Oct-2013		0.25	0.37	0.16						
9-Oct-2013		0.38	0.29	0.20						
10-Oct-2013		0.79	0.58	0.25						
11-Oct-2013		0.97	0.67	0.31						
12-Oct-2013		0.45	0.27	0.26						
13-Oct-2013		Sunday								
14-Oct-2013		Public Holiday								
15-Oct-2013		0.25	0.25	0.15						
16-Oct-2013		0.15	0.26	0.42						
17-Oct-2013		0.90	0.15	0.26						
18-Oct-2013		0.26	0.19	0.81						
19-Oct-2013		0.38	0.29	0.20						

Monitoring Check Pts.	Trigger Levels		
	Alert level	Alarm level	Action level
Vibrating Monitoring	2mm/s	2.5mm/s	3mm/s
#Vibration at largest span of highest Structural level	5.0mm/s	6.0mm/s	7.5mm/s

Vibration Record

Project Title: Central Police Station Conservation & Revitalization Project No: WP201 20-Oct-2013 to 2-Nov-2013

POINT		VM8-1	VM11-1#	VM11-2						
DATE	PD/(m)	mm/s	mm/s	mm/s						
23-Apr-2012 (Initial)		0.212	0.087	0.116						
20-Oct-2013					Sunday					
21-Oct-2013		0.15	0.26	0.42						
22-Oct-2013		0.24	0.34	0.33						
23-Oct-2013		0.15	0.25	0.75						
24-Oct-2013		0.31	0.16	0.23						
25-Oct-2013		0.26	0.25	0.35						
26-Oct-2013		0.54	0.95	1.85						
27-Oct-2013					Sunday					
28-Oct-2013		0.26	0.29	0.23						
29-Oct-2013		0.16	0.26	0.56						
30-Oct-2013		0.27	0.26	1.83						
31-Oct-2013		0.18	0.92	0.25						
1-Nov-2013		0.19	0.26	0.21						
2-Nov-2013		0.25	0.15	0.45						

Mini-piles with post-pressurized grout in CDG and steel shear H-piles at Block 1



NOTES:
 1. UTILITIES SETTLEMENT POINTS (UT1 TO UT6) SHALL ONLY BE INSTALLED AFTER EXCAVATION PERMIT IS OBTAINED. AS ALTERNATIVE SETTLEMENT POINTS (GS18 AND GS19) MAY BE INSTALLED.
 2. SHOULD UT1 TO UT6 BE INSTALLED, GS18 AND GS19 SHALL NOT BE REQUIRED.
 3. EITHER UTILITIES SETTLEMENT MARKERS (UT1 TO UT6) OR GROUND SETTLEMENT MARKERS (GS18 AND GS19) SHALL BE INSTALLED PRIOR TO COMMENCEMENT OF OLD BAILEY WING ELS WORKS.

LEGEND

	EXISTING FRESH WATER MAIN
	EXISTING SALT WATER MAIN
	EXISTING STREET LIGHTING NO. 33488-A1
	EXISTING STREET LIGHTING CABLE
	EXISTING GAS MAIN
	EXISTING HV ELECTRICITY CABLE
	EXISTING LV ELECTRICITY CABLE
	EXISTING TELECOMMUNICATION DUCT (HATCHSON & ORAL COMMUNICATIONS LIMITED)
	EXISTING STORMWATER DRAIN
	EXISTING FOUL SEWER
	PROPOSED FOUL SEWER
	SITE BOUNDARY
	EXISTING RETAINING WALL
	EXISTING DRILLHOLE WITH STANDPIPE/PREZOMETER
	PROPOSED BUILDING SETTLEMENT POINTS/TILTMETER
	PROPOSED RETAINING WALL SETTLEMENT POINTS/TILTMETER
	PROPOSED INCLINOMETER TO BE BUILT IN BORED PILE WALL OR PIPE PILE WALL
	PROPOSED GROUND SETTLEMENT POINTS
	PROPOSED UTILITY MONITORING POINTS
	PROPOSED VIBRATION MONITORING POINTS
	PROPOSED ADDITIONAL DRILLHOLE

NO.	DATE	DESCRIPTION	BY	CHECKED
1	03/11/2011	ISSUED FOR PERMIT	JS	JS
2	03/12/2011	ISSUED FOR PERMIT	JS	JS
3	03/12/2011	ISSUED FOR PERMIT	JS	JS

Plan Approved
 NG Kuan-ching
 Chief Structural Engineer
 for BUILDING AUTHORITY
 19 MAR 2012



BD SUBMISSION
 Drawing Status 製圖狀況

The drawing and the contents herein are the property of the client.
 此圖紙及其內容均為委託人所有。
 No part of this drawing and the design contained herein may be reproduced without the prior written consent of the client.
 未經委託人書面同意，不得複製或轉載此圖紙內任何內容。
 Do not take measurements directly from this drawing.
 切勿直接從此圖紙上量取尺寸。
 Check for any errors and the design contained herein may be revised without the prior written consent of the client.
 查閱此圖紙時請留意任何錯誤，未經委託人書面同意，不得直接從此圖紙上量取尺寸。
 Notify the relevant authorities immediately if any discrepancy is found between the drawing and the actual site conditions.
 如發現圖紙內容與實際現場情況不符，請立即通知有關當局。

Client 委託人

 Design Consultant
HERZOG & DEMEUREN
 Conservation Architect

 Executive Architect / AP
ROCCO
 Structural Engineer / RSC

ARUP

 Project 項目
**CENTRAL POLICE STATION
 CONSERVATION AND REVITALISATION
 PROJECT**

Drawing Title 圖名
MONITORING LAYOUT PLAN

Scale 比例尺
 1:3000A1
 Drawing No. 圖號
00-OAP209674-G-001 B



(Block 17 Foundation Works)



Monitoring Check Pts.	Trigger Levels		
	Alert level	Alarm level	Action level
Vibration Monitoring	2mm/s	2.5mm/s	3mm/s
# Vibration at largest span of highest Structural level	5.0mm/s	6.0mm/s	7.5mm/s

Vibration Record

Project Title: Central Police Station Conservation & Revitalization Project No: WP201 29-Sep-2013 to 12-Oct-2013

POINT		VM17-1	VM17-3 #						
DATE	PD/(m)	mm/s	mm/s						
19-Jun-2012 (Initial)		0.13	0.37						
Surveying Date									
29-Sep-2013		Sunday							
30-Sep-2013		0.32	0.30						
1-Oct-2013		Public Holiday							
2-Oct-2013		0.43	0.43						
3-Oct-2013		0.62	0.15						
4-Oct-2013		0.41	0.27						
5-Oct-2013		0.25	0.65						
6-Oct-2013		Sunday							
7-Oct-2013		0.32	0.30						
8-Oct-2013		0.16	0.23						
9-Oct-2013		0.34	0.37						
10-Oct-2013		0.17	0.34						
11-Oct-2013		0.24	0.38						
12-Oct-2013		0.25	0.12						
Remark									

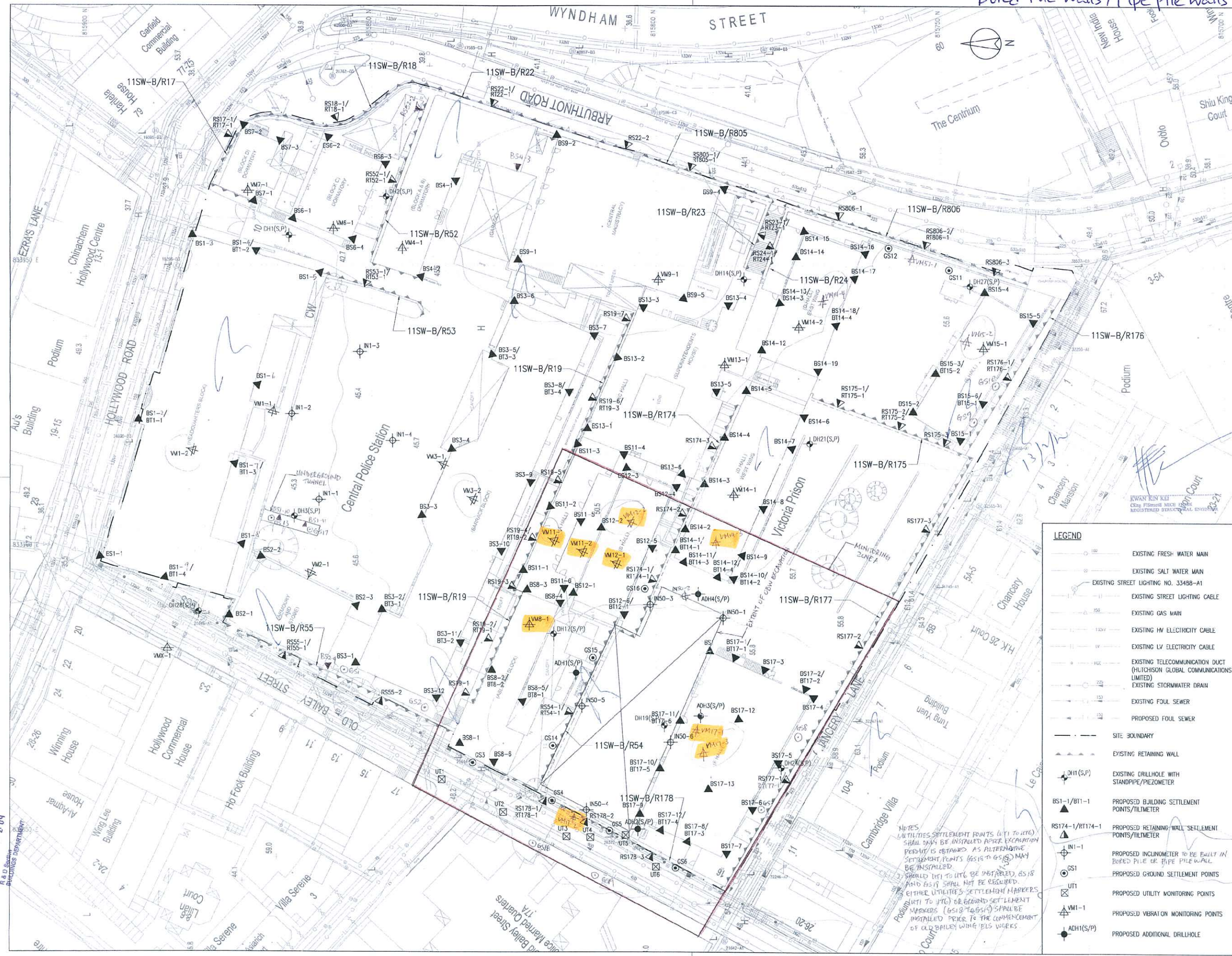
Monitoring Check Pts.	Trigger Levels		
	Alert level	Alarm level	Action level
Vibration Monitoring	2mm/s	2.5mm/s	3mm/s
# Vibration at largest span of highest Structural level	5.0mm/s	6.0mm/s	7.5mm/s

Vibration Record

Project Title: Central Police Station Conservation & Revitalization Project No: WP201 13-Oct-2013 to 26-Oct-2013

POINT		VM17-1	VM17-3 #						
DATE	PD/(m)	mm/s	mm/s						
19-Jun-2012 (Initial)		0.13	0.37						
Surveying Date									
13-Oct-2013				Sunday					
14-Oct-2013				Public Holiday					
15-Oct-2013		0.45	0.75						
16-Oct-2013		0.45	0.12						
17-Oct-2013		0.33	0.46						
18-Oct-2013		0.46	0.82						
19-Oct-2013		0.34	0.37						
20-Oct-2013				Sunday					
21-Oct-2013		0.45	0.12						
22-Oct-2013		0.35	0.26						
23-Oct-2013		0.38	0.34						
24-Oct-2013		0.45	0.19						
25-Oct-2013		0.70	0.25						
26-Oct-2013		0.95	0.27						
Remark									

Bored Pile Walls / Pipe pile Walls at Block 50



E.D. Ref. No. 2009/11 (2) (17.3.5) (H.C.) (S)
 F.S.D. Ref. No. 2009/11 (2) (17.3.5) (H.C.) (S)

Revision/Submission 修改版/ 版本
 No. 編號 Description 說明 Date 日期 Approved 審定
 - BD SUBMISSION 12/11 JS

Plan Approved

NG Kimshing
 Chief Structural Engineer
 for BUILDING AUTHORITY
 20 FEB 2012



BD SUBMISSION
 Drawing Status 圖樣狀況

This drawing and the content herein are the copyright of relevant consultants.
 本圖紙及其內容的版權屬有關顧問公司所有。
 No part of the drawing and the design contained herein may be reproduced without the prior written consent of relevant consultants.
 本圖紙內任何部分之圖樣及設計均不得在未經有關顧問公司書面同意下，再行複製或重印。
 Do not take measurements directly from this drawing.
 切勿直接從圖紙上量取尺寸。
 Check and verify all dimensions on site.
 所有尺寸必須在工地現場檢查及覆核。
 Read this drawing in conjunction with the specifications and all other related drawings.
 閱讀此圖紙必須與規格說明書及其他有關圖紙一併閱讀。
 Notify the relevant consultants immediately of any discrepancy found herein.
 如發現內容有任何錯誤之處，應立即通知有關顧問公司。

Client 業主
 賽馬會文物保育有限公司
 The Jockey Club CPS Limited

Design Consultant
HERZOG & DEMEUREN

Conservation Architect
 Rocco Engineering & Architecture

Executive Architect / AP
ARUP

Structural Engineer / RSE E & M Engineer
 JRP

Project 項目
**CENTRAL POLICE STATION
 CONSERVATION AND REVITALISATION
 PROJECT**

Drawing Title 圖名
MONITORING LAYOUT PLAN

Scale 比例 1:3000
 Drawn 繪圖 K.C.Loi
 Checked 校對 AL
 Drawing No. 圖號 00-OAP209674-G-001
 Revision 修改版

LEGEND

	EXISTING FRESH WATER MAIN
	EXISTING SALT WATER MAIN
	EXISTING STREET LIGHTING NO. 33488-A1
	EXISTING STREET LIGHTING CABLE
	EXISTING GAS MAIN
	EXISTING HV ELECTRICITY CABLE
	EXISTING LV ELECTRICITY CABLE
	EXISTING TELECOMMUNICATION DUCT (HILICHSON GLOBAL COMMUNICATIONS LIMITED)
	EXISTING STORMWATER DRAIN
	EXISTING FOUL SEWER
	PROPOSED FOUL SEWER
	SITE BOUNDARY
	EXISTING RETAINING WALL
	EXISTING DRILLHOLE WITH STANDPIPE/PNEUMETER
	PROPOSED BUILDING SETTLEMENT POINTS/TILMETER
	PROPOSED RETAINING WALL SETTLEMENT POINTS/TILMETER
	PROPOSED INCLINOMETER TO BE BUILT IN BORED PILE OR PIPE PILE WALL
	PROPOSED GROUND SETTLEMENT POINTS
	PROPOSED UTILITY MONITORING POINTS
	PROPOSED VIBRATION MONITORING POINTS
	PROPOSED ADDITIONAL DRILLHOLE

NOTES
 UTILITIES SETTLEMENT POINTS (UT1 TO UT6) SHALL ONLY BE INSTALLED AFTER EXCAVATION PERMIT IS OBTAINED AS ALTERNATIVE SETTLEMENT POINTS (GS16 TO GS25) MAY BE INSTALLED.
 應於獲准開挖後才安裝 UT1 至 UT6 之儀器，因為 GS16 至 GS25 之儀器亦可安裝。
 EITHER UTILITY SETTLEMENT MARKERS (UT1 TO UT6) OR GROUND SETTLEMENT MARKERS (GS16 TO GS25) SHALL BE INSTALLED PRIOR TO THE COMMENCEMENT OF OLD BAILEY WALLS WORKS.

RECEIVED BY
 2011 DEC 23 P 2:09
 R.A.D. Section
 PLANNING DEPARTMENT

Monitoring Check Pts.	Trigger Levels		
	Alert level	Alarm level	Action level
Vibration Monitoring	2mm/s	2.5mm/s	3mm/s
# Vibration at largest span of highest Structural level	5.0mm/s	6.0mm/s	7.5mm/s

Vibration Record

Project Title: Central Police Station Conservation & Revitalization Project No: WP201 22-Sep-2013 to 5-Oct-2013

POINT		VM8-1	VM11-1#	VM11-2	VM12-1#	VM12-2	VM14-3	VM17-1	VM17-2	VM17-3 #
DATE	PD/(m)	mm/s	mm/s	mm/s	mm/s	mm/s	mm/s	mm/s	mm/s	mm/s
19-Jun-2012 (Initial)		0.56	0.13	0.19	0.22	0.13	0.21	0.13	0.13	0.37
Surveying Date										
22-Sep-2013		Sunday								
23-Sep-2013		0.33	0.26	0.16	0.22	0.16	0.16	0.15	0.17	0.24
24-Sep-2013		0.15	1.27	0.14	0.23	0.16	0.16	0.27	0.45	0.26
25-Sep-2013		0.22	0.47	0.55	0.26	0.17	0.25	0.25	0.34	0.13
26-Sep-2013		0.38	0.25	1.90	0.28	0.16	0.26	0.26	0.40	0.45
27-Sep-2013		0.34	0.14	0.21	0.15	0.15	0.14	0.15	0.21	0.18
28-Sep-2013		0.34	0.71	0.29	0.20	0.32	1.20	0.34	0.19	0.49
29-Sep-2013		Sunday								
30-Sep-2013		0.12	0.21	0.25	0.16	0.13	0.25	0.32	0.22	0.30
1-Oct-2013		Public Holiday								
2-Oct-2013		0.21	0.28	0.18	0.40	0.18	0.19	0.43	0.50	0.43
3-Oct-2013		0.26	0.50	0.32	0.25	0.15	0.58	0.62	0.26	0.15
4-Oct-2013		0.15	0.20	0.37	0.57	0.29	0.30	0.41	0.64	0.27
5-Oct-2013		0.48	0.23	0.47	0.30	0.34	0.35	0.25	0.39	0.65
Remark										

Monitoring Check Pts.	Trigger Levels		
	Alert level	Alarm level	Action level
Vibration Monitoring	2mm/s	2.5mm/s	3mm/s
# Vibration at largest span of highest Structural level	5.0mm/s	6.0mm/s	7.5mm/s

Vibration Record

Project Title: Central Police Station Conservation & Revitalization Project No: WP201 6-Oct-2013 to 19-Oct-2013

POINT		VM8-1	VM11-1#	VM11-2	VM12-1#	VM12-2	VM14-3	VM17-1	VM17-2	VM17-3 #
DATE	PD/(m)	mm/s	mm/s	mm/s	mm/s	mm/s	mm/s	mm/s	mm/s	mm/s
19-Jun-2012 (Initial)		0.56	0.13	0.19	0.22	0.13	0.21	0.13	0.13	0.37
Surveying Date										
6-Oct-2013		Sunday								
7-Oct-2013		0.12	0.21	0.25	0.16	0.13	0.25	0.32	0.22	0.30
8-Oct-2013		0.25	0.37	0.16	0.57	0.27	0.24	0.16	0.38	0.23
9-Oct-2013		0.38	0.29	0.20	0.43	0.23	0.29	0.34	0.26	0.37
10-Oct-2013		0.79	0.58	0.25	0.18	0.26	0.15	0.17	0.18	0.34
11-Oct-2013		0.97	0.67	0.31	0.21	0.43	0.26	0.24	0.90	0.38
12-Oct-2013		0.45	0.27	0.26	0.75	0.47	0.15	0.25	0.26	0.12
13-Oct-2013		Sunday								
14-Oct-2013		Public Holiday								
15-Oct-2013		0.25	0.25	0.15	0.25	0.68	0.29	0.45	0.25	0.75
16-Oct-2013		0.15	0.26	0.42	0.19	0.37	0.52	0.45	0.25	0.12
17-Oct-2013		0.90	0.15	0.26	0.76	0.16	0.35	0.33	0.16	0.46
18-Oct-2013		0.26	0.19	0.81	0.35	1.02	1.11	0.46	0.73	0.82
19-Oct-2013		0.38	0.29	0.20	0.43	0.23	0.29	0.34	0.26	0.37
Remark										

Monitoring Check Pts.	Trigger Levels		
	Alert level	Alarm level	Action level
Vibration Monitoring	2mm/s	2.5mm/s	3mm/s
# Vibration at largest span of highest Structural level	5.0mm/s	6.0mm/s	7.5mm/s

Vibration Record

Project Title: Central Police Station Conservation & Revitalization Project No: WP201 20-Oct-2013 to 2-Nov-2013

POINT		VM8-1	VM11-1#	VM11-2	VM12-1#	VM12-2	VM14-3	VM17-1	VM17-2	VM17-3 #
DATE	PD/(m)	mm/s	mm/s	mm/s	mm/s	mm/s	mm/s	mm/s	mm/s	mm/s
19-Jun-2012 (Initial)		0.56	0.13	0.19	0.22	0.13	0.21	0.13	0.13	0.37
Surveying Date										
20-Oct-2013		Sunday								
21-Oct-2013		0.15	0.26	0.42	0.19	0.37	0.52	0.45	0.25	0.12
22-Oct-2013		0.24	0.34	0.33	0.29	0.38	0.13	0.35	0.32	0.26
23-Oct-2013		0.15	0.25	0.75	0.35	0.46	0.25	0.38	0.24	0.34
24-Oct-2013		0.31	0.16	0.23	0.70	0.15	0.16	0.45	0.31	0.19
25-Oct-2013		0.26	0.25	0.35	0.15	0.26	0.48	0.70	0.81	0.25
26-Oct-2013		0.54	0.95	1.85	0.25	0.45	0.98	0.95	0.21	0.27
27-Oct-2013		Sunday								
28-Oct-2013		0.26	0.29	0.23	0.20	0.54	0.64	0.30	0.15	0.41
29-Oct-2013		0.16	0.26	0.56	0.40	0.34	0.19	0.39	0.37	0.32
30-Oct-2013		0.27	0.26	1.83	1.53	0.62	0.36	0.23	0.19	0.22
31-Oct-2013		0.18	0.92	0.25	0.49	0.20	0.40	0.18	0.16	0.25
1-Nov-2013		0.19	0.26	0.21	0.35	0.22	0.18	0.48	0.26	0.37
2-Nov-2013		0.25	0.15	0.45	0.73	0.15	1.10	0.86	0.95	0.25
Remark										

Shaft Grouted Pre-bored H-piles at Block 51 (Arbutnot Wing)



Revision/Submitter 修改/提交		
No.	Description 說明	Date 日期
A	BO SUBMISSION (50)	12/11 JS
B	BO SUBMISSION (01)	03/12 JS
C	BO SUBMISSION (17)	03/12 JS
D	BO SUBMISSION REV BATCH 1	03/12 JS
E	FOR INFORMATION (50)	03/12 JS
F	BO SUBMISSION (51)	05/12 JS

Note: This plan has been prepared on a standard which basis under the supervision of the Structural Engineer as permitted by the Building Ordinance. The design is the responsibility of the Structural Engineer and the contractor shall be responsible for the construction and the quality of the work. The contractor shall be responsible for the safety of the work and the protection of the site and the public and the safety of the work and the protection of the site and the public.

Plan Approved
 NG Kin-ning
 Chief Structural Engineer
 for BUILDING AUTHORITY
 13 JUL 2012



BD SUBMISSION

Drawing Status 製圖狀況
 - This drawing and the contents herein are the copyright of the consultant.
 - No part of this drawing and the design contained herein may be reproduced without the prior written consent of the consultant.
 - Do not take measurements directly from this drawing.
 - Check and verify all dimensions on site.
 - Read this drawing in conjunction with the specifications and all other related drawings.
 - Notify the relevant consultants immediately of any discrepancy found herein.

Client 業主
 寶馬會文娛有限公司
 The Jockey Club OYS Limited

Design Consultant
HERZOG & DEMEUREN

Conservation Architect
ROCCO

Executive Architect / AP
ARUP

Structural Engineer / RSE
ARUP

Project 項目
 CENTRAL POLICE STATION
 CONSERVATION AND REVITALISATION
 PROJECT

Drawing Title 圖名
 MONITORING LAYOUT PLAN

Scale 比例
 Drawing 圖號
 00-OAP209674-G-001

Checked 校核
 Revision 修訂
 E

LEGEND

	EXISTING FRESH WATER MAIN
	EXISTING SALT WATER MAIN
	EXISTING STREET LIGHTING NO. 33488-A1
	EXISTING STREET LIGHTING CABLE
	EXISTING GAS MAIN
	EXISTING HV ELECTRICITY CABLE
	EXISTING LV ELECTRICITY CABLE
	EXISTING TELECOMMUNICATION DUCT (HITCHISON GLOBAL COMMUNICATIONS LIMITED)
	EXISTING STORMWATER DRAIN
	EXISTING FOUL SEWER
	PROPOSED FOUL SEWER
	SITE BOUNDARY
	EXISTING RETAINING WALL
	EXISTING DRILLHOLE WITH STANDPIPE/PIEZOMETER
	PROPOSED BUILDING SETTLEMENT POINTS/TILTMETER
	PROPOSED RETAINING WALL SETTLEMENT POINTS/TILTMETER
	PROPOSED INCLINOMETER TO BE BUILT IN BORED PILE WALL OR PIPE PILE WALL
	PROPOSED GROUND SETTLEMENT POINTS
	PROPOSED UTILITY MONITORING POINTS
	PROPOSED VIBRATION MONITORING POINTS
	PROPOSED ADDITIONAL DRILLHOLE

(Shaft Grouted Pre-bored H-piles at Block 51)



Monitoring Check Pts.	Trigger Levels		
	Alert level	Alarm level	Action level
Vibrating Monitoring	2mm/s	2.5mm/s	3mm/s

Vibration Record

Project Title: Central Police Station Conservation & Revitalization Project No: WP201 29-Sep-2013 to 12-Oct-2013

POINT		VM14-4	VM15-2	VM51-1						
DATE	PD/(m)	mm/s	mm/s	mm/s						
03-Dec-2012	(Initial)	0.14	0.21	0.3						
29-Sep-2013	Sunday									
30-Sep-2013		0.35	0.30	0.35						
1-Oct-2013	Public Holiday									
2-Oct-2013		0.39	0.22	0.22						
3-Oct-2013		0.25	0.25	0.26						
4-Oct-2013		0.42	0.28	0.29						
5-Oct-2013		0.26	0.25	0.15						
6-Oct-2013	Sunday									
7-Oct-2013		0.16	0.46	0.25						
8-Oct-2013		0.48	0.36	0.45						
9-Oct-2013		0.32	0.25	0.32						
10-Oct-2013		0.28	0.78	0.25						
11-Oct-2013		0.60	0.25	0.25						
12-Oct-2013		0.25	0.46	0.26						
Remarks										

(Shaft Grouted Pre-bored H-piles at Block 51)

WW 恆誠建築工程有限公司
Win Win Way Construction Company Ltd.

Monitoring Check Pts.	Trigger Levels		
	Alert level	Alarm level	Action level
Vibrating Monitoring	2mm/s	2.5mm/s	3mm/s

Vibration Record

Project Title: Central Police Station Conservation & Revitalization Project No: WP201 13-Oct-2013 to 26-Oct-2013

POINT		VM14-4	VM15-2	VM51-1						
DATE	PD/(m)	mm/s	mm/s	mm/s						
03-Dec-2012 (Initial)		0.14	0.21	0.3						
13-Oct-2013	Sunday									
14-Oct-2013	Public Holiday									
15-Oct-2013		0.22	0.35	0.61						
16-Oct-2013		0.75	0.26	0.21						
17-Oct-2013		0.42	0.20	0.46						
18-Oct-2013		0.79	0.60	0.25						
19-Oct-2013		0.75	0.26	0.21						
20-Oct-2013	Sunday									
21-Oct-2013		0.85	0.25	0.36						
22-Oct-2013		0.26	0.52	1.76						
23-Oct-2013		0.57	0.15	0.57						
24-Oct-2013		0.17	0.40	0.66						
25-Oct-2013		0.54	0.25	0.61						
26-Oct-2013		0.27	0.89	0.56						
Remarks										

Prepared by : Lo wing yue (Surveyor)

(Shaft Grouted Pre-bored H-piles at Block 51)



Monitoring Check Pts.	Trigger Levels		
	Alert level	Alarm level	Action level
Vibrating Monitoring	2mm/s	2.5mm/s	3mm/s

Vibration Record

Project Title: Central Police Station Conservation & Revitalization Project No: WP201 27-Oct-2013 to 9-Nov-2013

POINT		VM14-4	VM15-2	VM51-1						
DATE	PD/(m)	mm/s	mm/s	mm/s						
03-Dec-2012	(Initial)	0.14	0.21	0.3						
27-Oct-2013		Sunday								
28-Oct-2013		0.20	0.59	0.26						
29-Oct-2013		0.21	0.36	0.23						
30-Oct-2013		0.35	0.20	0.21						
31-Oct-2013		0.19	0.46	0.37						
1-Nov-2013		0.37	0.26	0.29						
2-Nov-2013		0.16	0.54	0.24						
3-Nov-2013										
4-Nov-2013		0.22	0.49	0.29						
5-Nov-2013										
6-Nov-2013										
7-Nov-2013										
8-Nov-2013										
9-Nov-2013										
Remarks										

Annex M

Records of Vibration
Monitoring for Other
Construction Works

Structural Alteration and Additions at Block 14



U.O. Ref. No. 基字編號/編號
22/2007/11 (E.L.S. 1, 4&18) (C) (S)
P.S.D. Ref. No. 地字編號/編號

No.	Description 說明	Date 日期	Approval 審批
-	BD SUBMISSION (50)	12/11	JS
A	BD SUBMISSION (01)	03/12	JS
B	BD SUBMISSION (17)	03/12	JS
C	BD SUBMISSION RW BATCH 1	03/12	JS
D	FOR INFORMATION (50)	03/12	JS
E	BD SUBMISSION (51)	05/12	JS
F	BD SUBMISSION (04)	05/12	JS
G	BD SUBMISSION (03)	05/12	JS
H	BD SUBMISSION (14)	05/12	JS

Note: This plan has been processed on a computerized system as per the standard processing system as prescribed in PWD/AD/12. The owner of the subject building, registered structural engineer and registered professional engineer concerned as specified under section 4(7)(a) and the provision of section 14(2)(b) of the Buildings Ordinance are of no further relevance in this regard.

Plan Approved
 NG-Kin-shing
 Chief Structural Engineer
 for BUILDING AUTHORITY
 - 9 AUG 2012



BD SUBMISSION
 Drawing Status 製圖狀況

- This drawing and its contents herein are the copyright of the consultant.
- 本圖紙及其內容均屬版權所有，歸顧問公司所有。
- No part of this drawing and the design conceived therein may be reproduced without the prior written consent of the consultant.
- 本圖紙內任何部分均不得复制或重現，除非獲得顧問公司的書面同意。
- Do not use measurements directly from this drawing.
- 切勿直接從圖紙上量取尺寸。
- Check and verify all dimensions on site.
- 請在現場核對及查核所有尺寸。
- Read this drawing in conjunction with the specifications and all other contract drawings.
- 閱讀此圖紙時，應與圖則及所有合約圖紙一併閱讀。
- Readily refer relevant consultants' consent of any necessary field visits.
- 如圖紙內容有任何疑難之處，應立即與有關顧問公司聯絡。

Client 業主
 香港警務處 (P.O. Box 221)
 The Police Club (CP) Limited

Design Consultant
HERZOG & DEMEUREN

Conservation Architect
 香港古物古蹟辦事處

Executive Architect / AP
ROCCO

Structural Engineer / RSE
ARUP

Project 項目
**CENTRAL POLICE STATION
 CONSERVATION AND REVITALISATION
 PROJECT**

Drawing Title 圖名
MONITORING LAYOUT PLAN

Scale 比例
 1:300BA1
 Drawing No. 圖號
 00-OAP209674-G-001
 Checked 校核
 K.C. Lo
 H

SWAN KIN 蘇恩
 Chief Structural Engineer
 REGISTERED STRUCTURAL ENGINEER

LEGEND

	EXISTING FRESH WATER MAIN
	EXISTING SALT WATER MAIN
	EXISTING STREET LIGHTING NO. 33488-A1
	EXISTING STREET LIGHTING CABLE
	EXISTING GAS MAIN
	EXISTING HV ELECTRICITY CABLE
	EXISTING LV ELECTRICITY CABLE
	EXISTING TELECOMMUNICATION DUCT (HUTCHISON GLOBAL COMMUNICATIONS LIMITED)
	EXISTING STORMWATER DRAIN
	EXISTING FOUL SEWER
	PROPOSED FOUL SEWER
	SITE BOUNDARY
	EXISTING RETAINING WALL
	EXISTING DRILLHOLE WITH STANDPIPE/PNEUMETER
	PROPOSED BUILDING SETTLEMENT POINTS/TILTMETER
	PROPOSED RETAINING WALL SETTLEMENT POINTS/TILTMETER
	PROPOSED INCLINOMETER TO BE BUILT IN BORED PILE WALL OR PIPE PILE WALL
	PROPOSED GROUND SETTLEMENT POINTS
	PROPOSED UTILITY MONITORING POINTS
	PROPOSED VIBRATION MONITORING POINTS
	PROPOSED ADDITIONAL DRILLHOLE

Monitoring Check Pts.	Trigger Levels		
	Alert level	Alarm level	Action level
Vibration Monitoring	2mm/s	2.5mm/s	3mm/s
# Vibration at largest span of highest Structural level	5.0mm/s	6.0mm/s	7.5mm/s

Vibration Record

Project Title: Central Police Station Conservation & Revitalization Project No: WP201 22-Sep-2013 to 5-Oct-2013

POINT		VM14-1#	VM14-2 #	VM14-3	VM14-4				
DATE	PD/(m)	mm/s	mm/s	mm/s	mm/s				
19-Nov-12 (Initial)		0.103	0.112	0.147	0.136				
22-Sep-2013		Sunday							
23-Sep-2013		0.13	0.45	0.16	0.15				
24-Sep-2013		0.15	0.26	0.16	0.14				
25-Sep-2013		0.25	0.26	0.25	0.15				
26-Sep-2013		0.22	0.31	0.26	0.27				
27-Sep-2013		0.27	0.30	0.14	0.23				
28-Sep-2013		0.35	0.63	1.20	0.23				
29-Sep-2013		Sunday							
30-Sep-2013		0.23	0.42	0.25	0.35				
1-Oct-2013		Public Holiday							
2-Oct-2013		0.21	0.21	0.19	0.39				
3-Oct-2013		0.15	0.26	0.58	0.25				
4-Oct-2013		0.16	0.37	0.30	0.42				
5-Oct-2013		0.25	0.16	0.35	0.26				
Remarks									

Monitoring Check Pts.	Trigger Levels		
	Alert level	Alarm level	Action level
Vibration Monitoring	2mm/s	2.5mm/s	3mm/s
# Vibration at largest span of highest Structural level	5.0mm/s	6.0mm/s	7.5mm/s

Vibration Record

Project Title: Central Police Station Conservation & Revitalization Project No: WP201 6-Oct-2013 to 19-Oct-2013

POINT		VM14-1#	VM14-2 #	VM14-3	VM14-4					
DATE	PD/(m)	mm/s	mm/s	mm/s	mm/s					
19-Nov-12 (Initial)		0.103	0.112	0.147	0.136					
6-Oct-2013		Sunday								
7-Oct-2013		0.46	0.27	0.25	0.16					
8-Oct-2013		0.13	0.46	0.24	0.48					
9-Oct-2013		0.38	0.22	0.29	0.32					
10-Oct-2013		0.47	0.25	0.15	0.28					
11-Oct-2013		0.55	0.25	0.26	0.60					
12-Oct-2013		0.79	0.25	0.15	0.25					
13-Oct-2013		Sunday								
14-Oct-2013		Public Holiday								
15-Oct-2013		0.22	0.41	0.29	0.22					
16-Oct-2013		0.15	0.12	0.52	0.75					
17-Oct-2013		0.74	0.40	0.35	0.42					
18-Oct-2013		0.15	0.25	1.11	0.79					
19-Oct-2013		0.66	0.12	0.29	0.75					
Remarks										

Monitoring Check Pts.	Trigger Levels		
	Alert level	Alarm level	Action level
Vibration Monitoring	2mm/s	2.5mm/s	3mm/s
# Vibration at largest span of highest Structural level	5.0mm/s	6.0mm/s	7.5mm/s

Vibration Record

Project Title: Central Police Station Conservation & Revitalization Project No: WP201 20-Oct-2013 to 2-Nov-2013

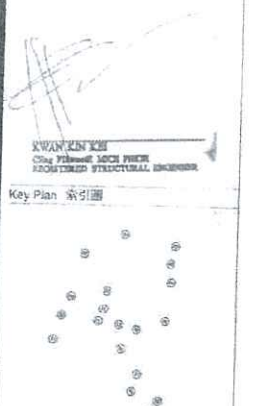
POINT		VM14-1#	VM14-2 #	VM14-3	VM14-4					
DATE	PD/(m)	mm/s	mm/s	mm/s	mm/s					
19-Nov-12 (Initial)		0.103	0.112	0.147	0.136					
20-Oct-2013		Sunday								
21-Oct-2013		0.25	0.25	0.52	0.85					
22-Oct-2013		0.27	0.45	0.13	0.26					
23-Oct-2013		0.46	0.79	0.25	0.57					
24-Oct-2013		0.51	0.14	0.16	0.17					
25-Oct-2013		0.15	0.25	0.48	0.54					
26-Oct-2013		0.48	0.75	0.98	0.27					
27-Oct-2013		Sunday								
28-Oct-2013		0.48	0.35	0.64	0.20					
29-Oct-2013		0.61	0.18	0.19	0.21					
30-Oct-2013		0.23	0.22	0.36	0.35					
31-Oct-2013		0.25	0.25	0.40	0.19					
1-Nov-2013		0.34	0.29	0.18	0.37					
2-Nov-2013		0.25	0.25	1.10	0.16					
Remarks										

Structural Alterations and Additions at Block 1



Plan Approved
 NGI Kiewit
 Chief Structural Engineer
 for BUILDING AUTHORITY
 11 SEP 2012

No.	Description	Date	Appr. By
ED	SUBMISSION (S0)	12/11	JS
A	RD SUBMISSION (01)	03/12	JS
H	RD SUBMISSION (11)	03/12	JS
C	RD SUBMISSION IN BATCH 1	03/12	JS
D	FOR INFORMATION (S0)	05/12	JS
E	RD SUBMISSION (S1)	05/12	JS
F	RD SUBMISSION (S4)	05/12	JS
G	RD SUBMISSION (C3)	05/12	JS
H	RD SUBMISSION (14)	05/12	JS
J	RD SUBMISSION IN BATCH 2	05/12	JS
K	RD SUBMISSION (S607)	07/12	JS
L	RD SUBMISSION (01)(H0)	07/12	JS



BD SUBMISSION 發展狀況

This drawing and the contents herein are the copyright of the author. No part of this drawing or the design or the construction may be reproduced without the prior written consent of the author.

此圖紙及其內容均為作者的版權。未經作者的書面同意，不得复制或重印此圖紙或其設計或建築。

Do not use measurements directly from this drawing. 切勿直接從此圖紙上量取尺寸。

Check and verify all dimensions on site. 在現場檢查及核實所有尺寸。

Road drawing in conjunction with the site plan and all other related drawings. 此圖紙必須與地盤圖及其他有關圖紙一併閱讀。

Not to be relevant to the responsibility of any disciplinary Council member. 此圖紙與任何紀律委員會成員的責任無關。

Design Consultant
HERZOG & DEMEUREN
 Conservation Architect

Executive Architect: AP
ROCCO
 許耀宗

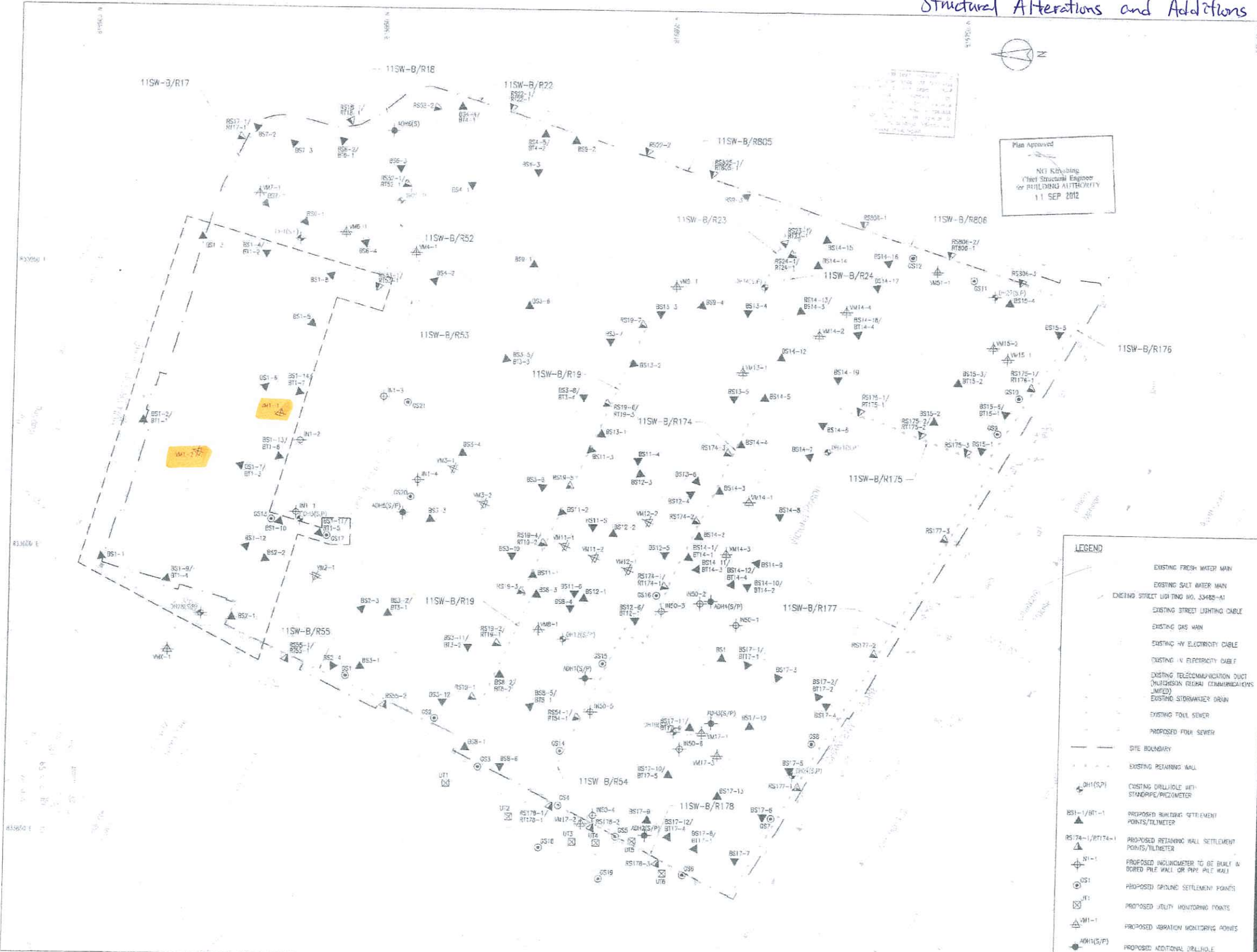
Structural Engineer: RSE
ARUP
 吳國強

Project 項目
**CENTRAL POLICE STATION
 CONSERVATION AND REVITALISATION
 PROJECT**

Drawing Title 圖名
MONITORING LAYOUT PLAN

Scale 比例尺
 Drawing No. 圖號
 00-0AP209674-G-C01 L

- LEGEND**
- EXISTING FRESH WATER MAIN
 - EXISTING SALT WATER MAIN
 - EXISTING STREET LIGHTING NO. 33485-4A1
 - EXISTING STREET LIGHTING CABLE
 - EXISTING GAS MAIN
 - EXISTING HV ELECTRICITY CABLE
 - EXISTING LV ELECTRICITY CABLE
 - EXISTING TELECOMMUNICATION DUCT (HIGH/LOW VOLTAGE COMMUNICATIONS JUMPS)
 - EXISTING STORMWATER DRAIN
 - EXISTING FOUL SEWER
 - PROPOSED FOUL SEWER
 - SITE BOUNDARY
 - EXISTING RETAINING WALL
 - EXISTING DRILLHOLE WITH STANDPIPE/PIEZOMETER
 - PROPOSED BUILDING SETTLEMENT POINTS/TILMETER
 - PROPOSED RETAINING WALL SETTLEMENT POINTS/TILMETER
 - PROPOSED INCLINOMETER TO BE INSTALLED IN BORED PILE WALL OR PIPE PILE WALL
 - PROPOSED GROUND SETTLEMENT POINTS
 - PROPOSED QUALITY MONITORING POINTS
 - PROPOSED VIBRATION MONITORING POINTS
 - PROPOSED ADDITIONAL DRILLHOLE



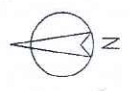


Gammon

Vibration Record of Block 1

POINT	VM1-1	VM1-2			
Date	mm/s	mm/s			
01-10-13	HOLIDAY				
02-10-13	0.207	0.362			
03-10-13	0.178	0.156			
04-10-13	0.122	0.212			
05-10-13	0.208	0.151			
06-10-13	SUNDAY				
07-10-13	0.143	0.200			
08-10-13	0.108	0.184			
09-10-13	0.160	0.239			
10-10-13	0.561	0.257			
11-10-13	0.093	0.194			
12-10-13	0.158	0.177			
13-10-13	SUNDAY				
14-10-13	HOLIDAY				
15-10-13	0.299	0.223			
16-10-13	0.102	0.223			
17-10-13	0.194	0.577			
18-10-13	0.160	0.153			
19-10-13	0.398	0.201			
20-10-13	SUNDAY				
21-10-13	0.445	0.280			
22-10-13	0.237	0.221			
23-10-13	0.272	0.216			
24-10-13	0.121	0.166			
25-10-13	0.122	0.256			
26-10-13	0.234	0.564			
27-10-13	SUNDAY				
28-10-13	0.580	0.122			
29-10-13	0.819	0.357			
30-10-13	0.207	0.415			
31-10-13	0.403	0.446			

Structural Additions and Alterations at Block 11



Note: This plan has been processed on a computer which uses the computerized processing system as specified in Part 14.19. The user of the software must register the user name and password as specified in the user manual and the user must ensure that the user name and password are not lost or destroyed. The user must ensure that the user name and password are not lost or destroyed.

Revision/Submission 校核/編號

No. 編號	Description 說明	Date 日期	Approved 審批
-	BD SUBMISSION (50)	12/11	JS
A	BD SUBMISSION (01)	03/12	JS
B	BD SUBMISSION (17)	03/12	JS
C	BD SUBMISSION RW BATCH 1	03/12	JS
D	FOR INFORMATION (50)	03/12	JS
E	BD SUBMISSION (51)	05/12	JS
F	BD SUBMISSION (04)	05/12	JS
G	BD SUBMISSION (14)	05/12	JS
H	BD SUBMISSION (14)	05/12	JS
J	BD SUBMISSION RW BATCH 2	05/12	JS
K	BD SUBMISSION (06&07)	07/12	JS
L	BD SUBMISSION (01)	07/12	JS
M	BD SUBMISSION (11)	07/12	JS

Plan Approved
CHIONG Kam-yung Jacky
 Chief Structural Engineer
 for BUILDING AUTHORITY
 - 3 OCT 2012



BD SUBMISSION
 Drawing Status 製圖狀況

This drawing and the contents herein are the copyright of relevant consultants.
 本圖紙及其內容的版權歸有關顧問公司所有。
 No part of the drawing and the design contained herein may be reproduced without the prior written consent of relevant consultants.
 未經有關顧問公司書面同意，不得複製此圖紙內任何內容。
 Do not take measurements directly from this drawing.
 切勿直接從圖紙上量度尺寸。
 Check and verify all dimensions on site.
 所有尺寸必須在工地現場核實及量度。
 Read this drawing in conjunction with the specifications and all other related drawings.
 此圖紙必須與圖紙說明書及其他相關圖紙一併閱讀。
 Notify the relevant consultants immediately of any discrepancy found herein.
 如發現圖紙內有任何錯誤之處，應立即通知有關顧問公司。

LEGEND

	EXISTING FRESH WATER MAIN
	EXISTING SALT WATER MAIN
	EXISTING STREET LIGHTING NC. 33488-A1
	EXISTING STREET LIGHTING CABLE
	EXISTING GAS MAIN
	EXISTING HV ELECTRICITY CABLE
	EXISTING LV ELECTRICITY CABLE
	EXISTING TELECOMMUNICATION DUCT (HUTCHISON GLOBAL COMMUNICATIONS LIMITED)
	EXISTING STORMWATER DRAIN
	EXISTING FOUL SEWER
	PROPOSED FOUL SEWER
	SITE BOUNDARY
	EXISTING RETAINING WALL
	EXISTING DRILLHOLE WITH STANDPIPE/PIEZOMETER
	PROPOSED BUILDING SETTLEMENT POINTS/TILTMETER
	PROPOSED RETAINING WALL SETTLEMENT POINTS/TILTMETER
	PROPOSED INCLINOMETER TO BE BUILT IN BORED PILE WALL OR PIPE PILE WALL
	PROPOSED GROUND SETTLEMENT POINTS
	PROPOSED UTILITY MONITORING POINTS
	PROPOSED VIBRATION MONITORING POINTS
	PROPOSED ADDITIONAL DRILLHOLE

Client 業主

 The Jersey Club CP Limited

Design Consultant
HERZOG & DEMEURON

Conservation Architect

 Rocco

Executive Architect / AP

ARUP

Structural Engineer / RSE
 E & M Engineer

JRP

Project 項目
**CENTRAL POLICE STATION
 CONSERVATION AND REVITALISATION
 PROJECT**

Drawing Table 圖名
MONITORING LAYOUT PLAN

Scale 比例
 1:300 @ A1

Drawn 繪圖
 K.C. Lai

Checked 校對
 AL

Drawing No. 圖號
 00-OAP209674-G-001

Revision 校核
 M

Cost file 00-OAP209674-G-001.dwg



Gammon

Vibration Record of Block 11

POINT	VM11-1	VM11-2			
Date	mm/s	mm/s			
01-10-13	HOLIDAY				
02-10-13	0.170	0.252			
03-10-13	0.232	0.264			
04-10-13	0.172	0.565			
05-10-13	0.186	0.116			
06-10-13	SUNDAY				
07-10-13	0.087	0.093			
08-10-13	0.319	0.113			
09-10-13	0.120	0.097			
10-10-13	0.248	0.095			
11-10-13	0.169	0.132			
12-10-13	0.083	0.113			
13-10-13	SUNDAY				
14-10-13	HOLIDAY				
15-10-13	0.166	0.272			
16-10-13	0.098	0.217			
17-10-13	0.108	0.117			
18-10-13	0.103	0.209			
19-10-13	0.336	0.086			
20-10-13	SUNDAY				
21-10-13	0.182	0.254			
22-10-13	0.587	0.145			
23-10-13	0.398	0.091			
24-10-13	0.160	0.122			
25-10-13	0.245	0.405			
26-10-13	0.091	0.129			
27-10-13	SUNDAY				
28-10-13	0.117	0.323			
29-10-13	0.125	0.181			
30-10-13	0.120	0.137			
31-10-13	0.166	0.448			