

The Jockey Club CPS Limited

Central Police Station Conservation
and Revitalisation Project:
75th Monthly EM&A Report
(1 January to 31 January 2018)

Issue Date: February 2018

Environmental Resources Management

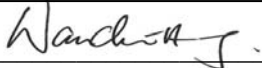

16/F Berkshire House
25 Westlands Road
Quarry Bay, Hong Kong
Telephone: (852) 2271 3000
Facsimile: (852) 2723 5660
E-mail: post.hk@erm.com
<http://www.erm.com>

The Jockey Club CPS Limited

Central Police Station Conservation
and Revitalisation Project:
75th Monthly EM&A Report
(From 1 January to 31 January 2018)

Issue Date: February 2018

Reference 0095646

For and on behalf of ERM-Hong Kong, Limited	
Approved by:	<u>Frank Wan</u>
Signed:	<u></u>
Position:	<u>Partner</u>
Certified by:	<u></u>
	(Environmental Team Leader - Katie Yu)
Date:	<u>12 February 2018</u>

This report has been prepared by ERM-Hong Kong, Limited with all reasonable skill, care and diligence within the terms of the Contract with the client, incorporating our General Terms and Conditions of Business and taking account of the resources devoted to it by agreement with the client.

We disclaim any responsibility to the client and others in respect of any matters outside the scope of the above.

This report is confidential to the client and we accept no responsibility of whatsoever nature to third parties to whom this report, or any part thereof, is made known. Any such party relies on the report at their own risk.

Your ref. 0095646_let_Atkins_20180213 Monthly EM&A Report No.75.doc
Our ref. 5121189/17.20/OC134/KC/EK
Date: 13 February 2018

電話 Tel (852) 2972 1000
傳真 Fax (852) 2890 6343

info.hk@atkinsglobal.com
www.atkinsglobal.com

By Post and Email (katie.yu@erm.com)

ERM-Hong Kong Limited,
16/F Berkshire House,
25 Westlands Road,
Quarry Bay,
Hong Kong

Attn: Ms Katie Yu

Dear Katie,

**Central Police Station Conservation and Revitalization Project
Verification of Monthly EM&A Report No. 75**

We refer to your letter dated 13 February 2018 regarding the Monthly EM&A Report No. 75. Atkins China Limited verifies, in the capacity of Independent Environmental Checker, that the report conforms the requirements provided in Condition 3.4 of the Environmental Permit (EP-408/2011/C).

**Yours faithfully,
for and on behalf of
Atkins China Limited**



**Keith Chau
Independent Environmental Checker**

c.c. HKJC – Mr. Kenneth Lee (By Email)
Rocco Design Architect – Mr. Charles Kung (By Email)

CONTENTS

1	INTRODUCTION	1
1.1	<i>PURPOSE OF THE REPORT</i>	1
1.2	<i>STRUCTURE OF THE REPORT</i>	1
2	PROJECT INFORMATION	3
2.1	<i>BACKGROUND</i>	3
2.2	<i>SITE DESCRIPTION</i>	3
2.3	<i>CONSTRUCTION ACTIVITIES</i>	3
2.4	<i>PROJECT ORGANISATION</i>	4
2.5	<i>STATUS OF ENVIRONMENTAL APPROVAL DOCUMENTS</i>	4
3	ENVIRONMENTAL MONITORING REQUIREMENTS	6
3.1	<i>NOISE MONITORING</i>	6
3.1.1	<i>Monitoring Location</i>	6
3.1.2	<i>Monitoring Parameters, Frequency and Programme</i>	6
3.1.3	<i>Monitoring Equipment and Methodology</i>	6
3.1.4	<i>Event / Action Plan</i>	7
3.1.5	<i>Mitigation Measures</i>	7
3.2	<i>CULTURAL HERITAGE</i>	7
3.2.1	<i>Vibration Monitoring</i>	7
3.2.2	<i>Mitigation Measures</i>	8
3.3	<i>LANDSCAPE AND VISUAL MONITORING</i>	9
3.3.1	<i>Mitigation Measures</i>	9
3.4	<i>ENVIRONMENTAL REQUIREMENTS IN CONTRACT DOCUMENTS</i>	9
4	IMPLEMENTATION STATUS ON ENVIRONMENTAL PROTECTION REQUIREMENTS	10
5	MONITORING RESULTS	11
5.1	<i>NOISE</i>	11
5.2	<i>CULTURAL HERITAGE</i>	11
5.2.1	<i>Vibration Monitoring</i>	11
5.2.2	<i>Heritage Site Audit</i>	11
5.3	<i>LANDSCAPE AND VISUAL</i>	12
5.4	<i>WASTE MANAGEMENT</i>	13
6	ENVIRONMENTAL SITE INSPECTION	14
7	ENVIRONMENTAL NON-CONFORMANCE	15
7.1	<i>SUMMARY OF MONITORING EXCEEDANCE</i>	15
7.2	<i>SUMMARY OF ENQUIRY</i>	15
7.3	<i>SUMMARY OF ENVIRONMENTAL NON-COMPLIANCE</i>	15
7.4	<i>SUMMARY OF ENVIRONMENTAL COMPLAINT</i>	15

7.5	<i>SUMMARY OF ENVIRONMENTAL SUMMONS AND SUCCESSFUL PROSECUTION</i>	15
8	<i>FUTURE KEY ISSUES</i>	16
8.1	<i>KEY ISSUES FOR THE COMING MONTH</i>	16
8.2	<i>MONITORING SCHEDULE FOR THE NEXT MONTH</i>	16
8.3	<i>CONSTRUCTION PROGRAMME FOR THE NEXT MONTH</i>	16
9	<i>CONCLUSIONS</i>	17

LIST OF TABLES

Table 2.1	Summary of Construction Activities Undertaken from 1 to 31 January 2018
Table 2.2	Summary of Environmental Licensing, Notification and Permit Status
Table 3.1	Construction Phase Noise Monitoring Station
Table 3.2	Noise Monitoring Equipment
Table 3.3	Action and Limit Levels for Construction Noise Monitoring
Table 3.4	Alert, Alarm and Action (AAA) Levels for Vibration Monitoring
Table 3.5	Event and Action Plan for Vibration Monitoring
Table 4.1	Status of Required Submissions
Table 5.1	Findings of Monthly Tree Inspection in the Reporting Period
Table 5.2	Quantities of Waste Generated from the Project
Table 8.1	Construction Works to be Undertaken in the Coming Month

LIST OF ANNEXES

Annex A	Locations of Works Areas and the Surroundings
<i>Annex A1</i>	<i>Project Location</i>
<i>Annex A2</i>	<i>Declared Monuments within the Project Site</i>
<i>Annex A3</i>	<i>Site Layout Plan marked with Works</i>
Annex B	Project Organization Chart and Contact Detail
Annex C	Locations of Noise Monitoring Stations and Noise Sensitive Receivers
Annex D	Monitoring Schedule of the Reporting Month and the Next Month
Annex E	Calibration Reports for Calibrators and Sound Level Meters
Annex F	Event/Action Plans for Noise
Annex G	Summary of Implementation Status
Annex H	Noise Monitoring Results
Annex I	Construction Programme for the Project
Annex J	Tree Inspection Reports
Annex K	Environmental Complaint, Environmental Summons and Prosecution Log

Annex L Records of Vibration Monitoring for Other Construction Works

EXECUTIVE SUMMARY

The construction works of **Central Police Station Conservation and Revitalisation Project** commenced on 24 October 2011. This is the 75th monthly Environmental Monitoring and Audit (EM&A) report presenting the EM&A works carried out during the period from 1 to 31 January 2018 in accordance with the EM&A Manual.

Summary of Construction Works undertaken during Reporting Period

The major construction works undertaken during the reporting period include:

- Sitewide hard landscape construction;
- Timber elements repair and replacement at Blocks 3, 9, 10 and 14;
- Fitting out works at Blocks 1, 3, 9, 10, 11, 12, 14, 17 and Old Bailey Wing;
- Metal works repair at Blocks 1, 3, 6, 9, 10, 12, 14, 15, 17, 19;
- External façade repair at Blocks 3, 9, 10, 13 and 14;
- E&M fixing at Blocks 1, 3, 9, 10, 13, 14, Arbuthnot Wing and Old Bailey Wing;
- Footbridge construction; and
- Structural enhancement works at Blocks 1, 3, 8, 9, 10 and 14.

Environmental Monitoring and Audit Progress

A summary of the monitoring activities in this reporting period is listed below:

- | | |
|---|----------|
| • Construction noise monitoring during normal weekdays at each monitoring station | 5 times |
| • Joint environmental site inspection | 1 time |
| • Heritage site inspections | 26 times |
| • Landscape & visual monitoring / tree inspection | 1 time |
| • Vibration monitoring for other construction works | 26 times |

Noise

5 sets of 30-minute construction noise measurements were carried out at each of the monitoring stations (NM2 and NM6) during normal weekdays of the reporting period. No exceedance of the Action or Limit Level of construction noise was recorded during the reporting period.

Cultural Heritage

No vibration monitoring was carried out for demolition works, trial piling or pile/bored piling works as the aforementioned works were not conducted during the reporting period.

Vibration monitoring carried out for other construction works during the reporting period are listed below:

- 26 vibration monitoring measurements for the structural addition and alteration works at Block 11.

No exceedance of the Alert, Alarm and Action Levels was recorded during the reporting period.

Heritage site audits were conducted on every working weekday in January 2018 by the Heritage Checker during the reporting period.

Major observations and recommendations during the site inspections were listed below:

12 January 2018

- Debris was observed on the floor, tiles and wash basin due to paint removal on ground floor of Block 14. The Contractor was reminded to clean up the debris and protect the existing building fabric.

31 January 2018

- It was observed that a number of new metal doors at lower ground floor of Block 14 were not fabricated in accordance with approved drawings. The Contractor was reminded to rectify the doors.

The Contractor was urged to follow-up the necessary rectification based on the inspection findings.

Landscape & Visual

Landscape and visual monitoring has commenced since October 2011 on a monthly basis. The tree inspection was conducted on 10 January 2018 by the arborist during the reporting period. Leaves on Tree 6 and Tree 7 were observed to be rather sparse with some faded leaves due to dry season. Four pits near each of the planter of Tree 6 and Tree 7 were created for ventilation purpose for the trees. The Contractor was reminded to keep close monitoring of the growth of Tree 6 and Tree 7. The Contractor has provided a temporary shelter for the protection of Tree 11 during the nearby renovation works. Withered leaves were observed on Tree 11. Some construction debris was also observed at the planter of Tree 11 and the Contractor was reminded to remove the construction debris. The Contractor should closely monitor the growth of Tree 11 especially during the nearby renovation works are in progress.

Waste Management

Wastes generated from this Project include inert construction and demolition (C&D) materials and non-inert C&D materials. A total of 87.24 tonnes of

inert C&D materials were generated during the reporting period. 186.5 tonnes of non-inert C&D materials comprising general refuse and mixed construction waste were generated during the reporting period. No metal, paper/cardboard packaging or plastic waste was recycled during the reporting period. No chemical waste was collected by licenced chemical waste collector during the reporting period.

Environmental Site Inspection

A joint environmental site inspection was carried out by the representatives of the Contractor, the IEC and the ET on 16 January 2018. There is no major observation or recommendation recorded during the environmental site inspection.

Environmental Exceedance/Non-conformance/Compliant/Enquiry/Summons and Prosecution

No exceedance of the Action or Limit Level of construction noise was recorded at designated monitoring stations during the reporting period.

No exceedance of the Alert, Alarm and Action Levels of vibration was recorded during the reporting period.

No enquiry was received during the reporting period.

No environmental non-compliance event was recorded during the reporting period. No non-compliance report related to the character defining elements, historic buildings and structures was issued during the reporting period.

One complaint was received during the reporting period. A complaint on improper storage of construction waste was received by the EPD on 29 January 2018 and transferred to the ET on 2 February 2018. The complaint investigation is under progress and the findings will be reported in the next reporting period.

No summons/prosecution was received during the reporting period.

Future Key Issues

Work items to be undertaken in the next month include:

- Sitewide hard landscape construction;
- Timber elements repair and replacement at Blocks 3, 9 and 10;
- Fitting out works at Blocks 1, 3, 9, 10, 12, 14, 17 and Old Bailey Wing;
- Metal works repair at Blocks 1, 3, 9, 10, 12 and 14;
- External façade repair at Blocks 3, 9, 10 and 13;
- E&M fixing at Blocks 1, 3, 9, 10, 14, Arbuthnot Wing and Old Bailey Wing;
- Footbridge construction; and
- Structural enhancement works at Block 1, 3, 8, 10 and 14.

Potential environmental impacts arising from the above construction activities are mainly associated with dust, construction noise, site runoff and waste management.

1 INTRODUCTION

ERM-Hong Kong, Limited (ERM) was appointed by the Jockey Club CPS Limited (the CPS Ltd) as the Environmental Team (ET) to undertake the Environmental Monitoring and Audit (EM&A) programme for the **Central Police Station Conservation and Revitalisation Project** (the Project).

1.1 PURPOSE OF THE REPORT

This is the 75th EM&A report which summarises the impact monitoring results and audit findings for the EM&A programme during the reporting period from **1 to 31 January 2018**.

1.2 STRUCTURE OF THE REPORT

The structure of the report is as follows:

Section 1 : **Introduction**

details the scope and structure of the report.

Section 2 : **Project Information**

summarises background and scope of the Project, site description, project organization and contact details, construction programme, the construction works undertaken and the status of Environmental Permit(s)/License(s) during the reporting period.

Section 3 : **Environmental Monitoring Requirements**

summarises the monitoring parameters, monitoring programmes, monitoring methodologies, monitoring frequency, monitoring locations, Action and Limit Levels, Event/ Action Plans, environmental mitigation measures as recommended in the EIA report and relevant environmental requirements.

Section 4 : **Implementation Status on Environmental Protection Requirements**

summarises the implementation of environmental protection measures during the reporting period.

Section 5 : **Monitoring Results**

summarises the monitoring results obtained in the reporting period.

Section 6 : **Environmental Site Inspection**

summarises the audit findings of the site inspections undertaken within the reporting period.

Section 7 : **Environmental Non-conformance**

summarises any monitoring exceedance, environmental complaints and environmental summons within the reporting period.

Section 8 : **Future Key Issues**

summarises the impact forecast and monitoring schedule for the next reporting month.

Section 9 : **Conclusions**

2 PROJECT INFORMATION

2.1 BACKGROUND

The Chief Executive (CE)'s 2007-2008 Policy Address highlighted revitalisation as the guiding principle of heritage conservation and the Project was one of the specific proposals put forward by the CE in the same Policy Address. At the meeting of the Executive Council (ExCo) on 15 July 2008, the ExCo advised and the CE ordered that Government should enter into a partnership with the Hong Kong Jockey Club (HKJC) in the form of an agreement (or agreements) to take forward the conservation and revitalisation of the CPS project based on various guiding parameters. The Project is now being undertaken in partnership with the Development Bureau of the HKSAR Government. The HKJC has taken on board the decision at the ExCo meeting and further investigated the design and implementation of the Project. The Project is now implemented by the Jockey Club CPS Limited.

2.2 SITE DESCRIPTION

The location of the Project Site is shown in *Annex A1*. The Site is bounded by Hollywood Road to the north, Arbuthnot Road to the east, Chancery Lane to the south and Old Bailey Street to the west.

The Site comprises three Declared Monuments designated under the *Antiquities and Monuments Ordinance* in 1995. They are:

- Central Police Station;
- Former Central Magistracy; and
- Victoria Prison Compound.

They are collectively named the Central Police Station (CPS). *Annex A2* shows the location of the Declared Monuments within CPS and the buildings within the CPS.

2.3 CONSTRUCTION ACTIVITIES

A summary of the major construction activities undertaken in this reporting period is shown in *Table 2.1* and illustrated in *Annex A3*.

Table 2.1 **Summary of Construction Activities Undertaken from 1 to 31 January 2018**

Construction Activities Undertaken

- Sitewide hard landscape construction;
 - Timber elements repair and replacement at Blocks 3, 9, 10 and 14;
 - Fitting out works at Blocks 1, 3, 9, 10, 11, 12, 14, 17 and Old Bailey Wing;
 - Metal works repair at Blocks 1, 3, 6, 9, 10, 12, 14, 15, 17, 19;
 - External façade repair at Blocks 3, 9, 10, 13 and 14;
 - E&M fixing at Blocks 1, 3, 9, 10, 13, 14, Arbuthnot Wing and Old Bailey Wing;
 - Footbridge construction; and
 - Structural enhancement works at Blocks 1, 3, 8, 9, 10 and 14.
-

2.4 **PROJECT ORGANISATION**

The Project organisation chart and contact details are shown in *Annex B*.

2.5 **STATUS OF ENVIRONMENTAL APPROVAL DOCUMENTS**

A summary of the valid permits, licences, and/or notifications on environmental protection for this Project in the reporting period is presented in *Table 2.2*.

Table 2.2 Summary of Environmental Licensing, Notification and Permit Status

Permit/ Licences/ Notification	Reference	Validity Period	Remarks
Environmental Permit (EP)	EP-408/2011/C	Throughout the Contract	Permit granted on 29 April 2016
Notification of Construction Works as required under <i>Air Pollution Control (Construction Dust) Regulation</i>	Ref. No. 332920	Throughout the Contract	-
Registration of Chemical Waste Producer under <i>Waste Disposal Ordinance</i>	Chemical Waste Producer No.: 5213-122-G2347-25	Throughout the Contract	-
Disposal of C&D material/waste	Billing Account Number: 7013338	Throughout the Contract	-
Effluent Discharge License under <i>Water Pollution Control Ordinance</i>	License No. WT00026824-2017	11 Jan 2017 – 31 Oct 2021	The renewed licence was issued on 11 January 2017
Notification of Commencement of Asbestos Abatement Work under <i>Air Pollution Control Ordinance</i>	-	Throughout the Contract	EPD's letter (EPD's ref.: (5) in EPAC/A/4/000/23 3 II) dated 2 December 2011 satisfied that the content of the asbestos abatement plan (Report No.: 0210/11/ED/0078A) is in accordance with the APCO
Approval of Asbestos Abatement Work (Phase 2)	-	Earliest commencement date on 26 January 2012	EPD's letter (EPD's ref:() in EPAC/A/4/000/23 3) dated 18 January 2012.
Construction Noise Permit (CNP)	GW-RS0980-17	15 November 2017 at 1900 hours to 14 May 2018 at 2300 hours	-
	GW-RS0983-17	15 November 2017 at 2300 hours to 30 January 2018 at 0600 hours	-

3.1 NOISE MONITORING

3.1.1 Monitoring Location

The construction noise monitoring locations are listed in *Table 3.1* and are shown in *Annex C*.

Table 3.1 Construction Phase Noise Monitoring Station

Monitoring Location	Proposed Construction Noise Monitoring Station			
	ID in EM&A Manual	ID	Type of Measurement	Remark
Rooftop of Ho Fook Building	N2	NM2	Façade	-
Rooftop of Chancery Mansion	---	NM6	Façade	Accesses to the original proposed monitoring location in the EM&A Manual, Chancery House (N5), were denied; alternative location of Chancery Mansion (N6), were therefore proposed and approved by the Authorised Person (AP), the Independent Environmental Checker (IEC) and EPD.

The noise sensitive receivers are also shown in *Annex C*.

3.1.2 Monitoring Parameters, Frequency and Programme

Weekly construction noise monitoring was conducted in accordance with the requirements stipulated in the EM&A Manual. The monitoring programme for this reporting period is shown in *Annex D*.

The construction noise levels were measured in terms of A-weighted equivalent continuous sound pressure level (L_{eq}) in decibels dB(A). $L_{eq(30min)}$ were used as the monitoring parameter for the time period in between 0700 – 1900 hours on normal weekdays. Supplementary information for data auditing, two statistical sound levels L_{10} and L_{90} - the levels exceeded for 10 and 90 percent of the time respectively, were also recorded during the monitoring for reference. The measured noise levels were logged in every 5 minutes throughout the impact monitoring period.

3.1.3 Monitoring Equipment and Methodology

Construction noise measurements were conducted in accordance with the calibration and measurement procedures as stated in *Annex – General Calibration and Measurement Procedures of Technical Memorandum on Noise from Construction Work other than Percussive Piling (GW-TM)* issued under the *Noise Control Ordinance (NCO) (Cap 400)*.

The sound level meters and calibrator used for the noise measurement, as listed in *Table 3.2*, complies with the IEC 651: 1979 and 804:1985 (Type 1) specifications. The calibration certificates of the sound level meters are appended in *Annex E*.

Table 3.2 *Noise Monitoring Equipment*

Monitoring Stations	Monitoring Equipment (Sound Level Meter and Calibrator)
NM2, NM6	<u>Calibrator</u>
	CEL 120 (S/N 3421612)
	<u>Sound Level Meter</u>
	CEL-633A (S/N 3521757)

Immediately prior to and following the noise measurements, the accuracy of the measurement equipment was checked using an acoustic calibrator generating a known sound pressure level at a known frequency.

Measurements were accepted as the calibration level from before and after the noise measurement agree to within 1.0 dB(A).

3.1.4 *Event / Action Plan*

Table 3.3 *Action and Limit Levels for Construction Noise Monitoring*

Noise Monitoring Location	Action Level	Limit Level, $L_{eq(30mins), dB(A)}$	Remark
NM2, NM6	When one documented complaint is received from any one of the sensitive receivers	75 ^(note)	Applicable during 0700 – 1900 hours on normal weekdays.

Notes:

- (a) Acceptable Noise Levels for Area Sensitivity Rating of A/B/C. Limit Level is reduced to 70dB(A) for schools and 65dB(A) during school examination periods.
- (b) If works are to be carried out during restricted hours, the conditions stipulated in the CNP issued by the NCA have to be followed.

The Event / Action Plan (EAP) for noise monitoring is presented in *Annex F*.

3.1.5 *Mitigation Measures*

The mitigation measures in accordance with the EP, EIA and EM&A Manual and their implementation status are presented in *Annex G*.

3.2 *CULTURAL HERITAGE*

3.2.1 *Vibration Monitoring*

In accordance with the EM&A Manual, vibration monitoring is required and the vibration control limits and vibration monitoring proposal are defined by a specialist for AMO's approval.

Baseline Monitoring

Baseline vibration monitoring was not conducted during the reporting period.

Vibration Monitoring for Demolition Works

As no demolition works were carried out, vibration monitoring for demolition works was not conducted during the reporting period.

Vibration Monitoring for Trial Piling and Pipe/Bored Piling Works

As no trial piling or pipe/bored piling works were carried out, vibration monitoring for trial piling and piling works was not conducted during the reporting period.

Vibration Monitoring for Other Construction Works

Vibration monitoring for specific construction works other than demolition works, trial piling works and pipe/bored piling works is also required in accordance with Building Department's requirement. The monitoring location is shown in *Annex L*. The number and location of monitoring location will depend on the location of the specific construction works. The vibration monitoring should be conducted for duration of 5 minutes on a daily basis (working day) at each vibration monitoring location.

Alert, Alarm and Action Levels

The Alert, Alarm and Action (AAA) Levels are to be implemented during the vibration monitoring and shown in *Table 3.4*.

Table 3.4 *Alert, Alarm and Action (AAA) Levels for Vibration Monitoring*

Instrument Type	Item Monitored	Alert Level	Alarm Level	Action Level
Vibration Monitoring	Horizontal Movement	2.0 mm/s	2.5 mm/s	3.0 mm/s

The Event / Action Plan (EAP) for vibration monitoring is shown in *Table 3.5*.

Table 3.5 *Event and Action Plan for Vibration Monitoring*

Events	Action
Exceedance of Alert Level	Notify Management Contractor
Exceedance of Alarm Level	Notify Authorised Person/ Resident Engineer
Exceedance of Action Level	Cease Works and submit mitigation

3.2.2 *Mitigation Measures*

Cultural heritage mitigation measures (including those for archaeology) in accordance with the EP, EIA and EM&A Manual were implemented by the Contractor and the implementation status is given in *Annex G*.

3.3 *LANDSCAPE AND VISUAL MONITORING*

In accordance with the EM&A Manual, inspections of affected trees were conducted by an experienced and appropriately trained arborist. All irregularities that deviate from the recommended tree protection measures or could impose deleterious impacts on the protected trees were reported. Besides, implementation of mitigation measures for landscape and visual resources recommended in the EIA Report were also monitored during the site inspection.

3.3.1 *Mitigation Measures*

Landscape and visual mitigation measures in accordance with the EP, EIA and EM&A Manual were implemented by the Contractor and the implementation status is given in *Annex G*.

3.4 *ENVIRONMENTAL REQUIREMENTS IN CONTRACT DOCUMENTS*

The environmental requirements as specified in the contract documents were reviewed and were covered in the EIA's requirements.

IMPLEMENTATION STATUS ON ENVIRONMENTAL PROTECTION REQUIREMENTS

The Contractor has generally implemented the environmental mitigation measures (including those for archaeology) and requirements as stated in the EIA Report, the EP and EM&A Manual and the contract documents. The implementation status during the reporting period is summarized in *Annex G*.

Status of required submissions under the EP and EM&A Manual during the reporting period is presented in *Table 4.1*.

Table 4.1 *Status of Required Submissions*

Submission		Submission Date
<i>EP Condition</i>		
Condition 3.4	74 th Monthly EM&A Report	12 January 2018

5 MONITORING RESULTS

5.1 NOISE

A total of 5 sets of 30-minute construction noise measurements were carried out at the monitoring stations (NM2 and NM6) during normal weekdays of the reporting period. The monitoring results together with graphical presentations are presented in *Annex H*. The local impacts observed near the monitoring stations of NM2 and NM6 were summarised below:

- NM2: construction noise from activities in the Project Site and traffic noise from Old Bailey Street.
- NM6: construction noise from activities in the Project Site and traffic noise from Chancery Lane.

No exceedance of the Action or Limit Level of construction noise was recorded during the reporting period.

5.2 CULTURAL HERITAGE

5.2.1 *Vibration Monitoring*

Trial Piling and Piling works

No vibration monitoring was carried out for the trial piling and piling works as there were no piling works conducted during the reporting period.

Other Construction Works

Vibration monitoring carried out for other construction works during the reporting period are listed below:

- 26 vibration monitoring measurements for the structural addition and alteration works at Block 11.

The monitoring results are presented in *Annex L*.

All monitoring results were below the Alert/ Alarm/ Action Levels.

5.2.2 *Heritage Site Audit*

Heritage site audits were conducted on every working weekday in January 2018 by the Heritage Checker during the reporting period.

Major observations and recommendations during the site inspections were listed below:

12 January 2018

- Debris was observed on the floor, tiles and wash basin due to paint removal on ground floor of Block 14. The Contractor was reminded to clean up the debris and protect the existing building fabric.

31 January 2018

- It was observed that a number of new metal doors at lower ground floor of Block 14 were not fabricated in accordance with approved drawings. The Contractor was reminded to rectify the doors.

The Contractor was urged to follow-up the necessary rectification based on the inspection findings.

5.3

LANDSCAPE AND VISUAL

The tree inspection was conducted by the arborist on 10 January 2018 and major observations and recommendations in the reporting period are summarised in *Table 5.1*. The tree inspection report is contained in *Annex J*.

Table 5.1 Findings of Monthly Tree Inspection in the Reporting Period

Tree No.	Botanical Name	Overall Health Condition	Arborist's Observations / Recommendations
Tree -5	<i>Mangifera indica</i>	Good	<ul style="list-style-type: none"> • No further action required.
Tree -6	<i>Aleurites moluccana</i>	Fair	<ul style="list-style-type: none"> • Leaves on the crown are rather sparse. • Four pits near the planter were created for ventilation purpose for the tree. • Some faded leaves observed due to dry season. • Keep monitoring on the growth of the tree.
Tree-7	<i>Aleurites moluccana</i>	Fair	<ul style="list-style-type: none"> • Leaves on the crown are rather sparse. • Four pits near the planter were created for ventilation purpose for the tree. • Some faded leaves observed due to dry season. • Keep monitoring on the growth of the tree.
Tree-8	<i>Plumeria rubra</i>	Good	<ul style="list-style-type: none"> • No further action required.
Tree-9	<i>Araucaria cunninghamia</i>	Good	<ul style="list-style-type: none"> • No further action required.
Tree-11	<i>Dracaena marginata</i>	Fair	<ul style="list-style-type: none"> • Withered leaves were observed on the tree. • The Contractor should closely monitor the growth of the tree especially during the nearby renovation works are in progress.

Tree No.	Botanical Name	Overall Health Condition	Arborist's Observations / Recommendations
			<ul style="list-style-type: none"> Some construction debris was observed at the planter. The Contractor was reminded to remove the construction debris from the planter.

5.4

WASTE MANAGEMENT

Wastes generated from this Project include inert construction and demolition (C&D) materials and non-inert C&D materials. Non-inert C&D materials were made up of wastes such as general refuse and mixed construction waste. With reference to relevant handling records and trip tickets of this Project, the quantities of different types of waste generated in the reporting period are summarised in *Table 5.2*. No metal, paper/cardboard packaging or plastic waste was recycled during the reporting period. No chemical waste was collected by licenced chemical waste collector during the reporting period.

Table 5.2 *Quantities of Waste Generated from the Project*

Month / Year	Quantity						
	C&D Materials (inert) ^(a)	C&D Materials (non-inert) ^(b)	Chemical Waste		Recycled materials ^(e)		
			Solid	Liquid	Paper / cardboard	Plastics	Metals
January 2018	87.24 tonnes ^(c)	186.5 tonnes ^(d)	0 kg	0 L	0 kg	0 kg	0 kg

Notes:

- (a) Inert C&D materials include bricks, concrete, building debris, rubble and excavated soil.
- (b) Non-inert C&D materials include general refuse and mixed construction waste which were disposed of at landfill site and/or sorting facilities.
- (c) 87.24 tonnes of inert C&D materials were sent to Chai Wan Public Fill Barging Point.
- (d) 186.5 tonnes of non-inert C&D materials were disposed of at SENT Landfill.

Joint environmental site inspection was conducted by the representatives of the Contractor, IEC and the ET in the reporting period on 16 January 2018. There was no non-compliance recorded during the site inspection.

Follow-up Actions for the Last Site Audit

- The chemical drums observed outside Block 14 were removed.
- All wastewater generated from the site has been properly treated prior to discharge to the stormwater drainage system.

Observations and Recommendations of this Reporting Month

- Nil.

7 ENVIRONMENTAL NON-CONFORMANCE

7.1 SUMMARY OF MONITORING EXCEEDANCE

No exceedance of the Action or Limit Level of construction noise or Alert, Alarm and Action Levels of vibration was recorded during the reporting period.

7.2 SUMMARY OF ENQUIRY

No enquiry was recorded during the reporting period.

7.3 SUMMARY OF NON-COMPLIANCE

No environmental non-compliance event was recorded during the reporting period. No non-compliance report related to the character defining elements, historic buildings and structures was issued during the reporting period.

7.4 SUMMARY OF ENVIRONMENTAL COMPLAINT

One complaint was received during the reporting period. A complaint on improper storage of construction waste was received by the EPD on 29 January 2018 and transferred to the ET on 2 February 2018. The complaint investigation is under progress and the findings will be reported in the next reporting period. The cumulative number of complaints is presented in *Annex K*.

7.5 SUMMARY OF ENVIRONMENTAL SUMMONS AND SUCCESSFUL PROSECUTION

No summons/prosecution was received during the reporting period.

8.1 KEY ISSUES FOR THE COMING MONTH

Construction works at the CPS site have resumed except for Block 4. Works to be undertaken for the coming monitoring period are summarised in *Table 8.1*.

Table 8.1 *Construction Works to be Undertaken in the Coming Month*

Work to be Undertaken
<ul style="list-style-type: none"> • Sitewide hard landscape construction; • Timber elements repair and replacement at Blocks 3, 9 and 10; • Fitting out works at Blocks 1, 3, 9, 10, 12, 14, 17 and Old Bailey Wing; • Metal works repair at Blocks 1, 3, 9, 10, 12 and 14; • External façade repair at Blocks 3, 9, 10 and 13; • E&M fixing at Blocks 1, 3, 9, 10, 14, Arbuthnot Wing and Old Bailey Wing; • Footbridge construction; and • Structural enhancement works at Block 1, 3, 8, 10 and 14.

Potential environmental impacts arising from the above construction activities are mainly associated with dust, construction noise, site runoff and waste management.

8.2 MONITORING SCHEDULE FOR THE NEXT MONTH

The tentative schedule of noise monitoring for the next reporting period is presented in *Annex D*.

8.3 CONSTRUCTION PROGRAMME FOR THE NEXT MONTH

The most updated construction programme for the Project is presented in *Annex I*.

CONCLUSIONS

The *Environmental Monitoring and Audit (EM&A) Report* presents the EM&A works undertaken during the period from 1 to 31 January 2018 in accordance with EM&A Manual and the requirement under EP-408/2011/C.

No exceedance of the Action or Limit Level of construction noise was recorded at designated monitoring stations during the reporting period.

No exceedance of Alert, Alarm and Action Levels of vibration was recorded during the reporting period.

No enquiry was received during the reporting period.

No environmental non-compliance event was recorded during the reporting period. No non-compliance report related to the character defining elements, historic buildings and structures was issued during the reporting period.

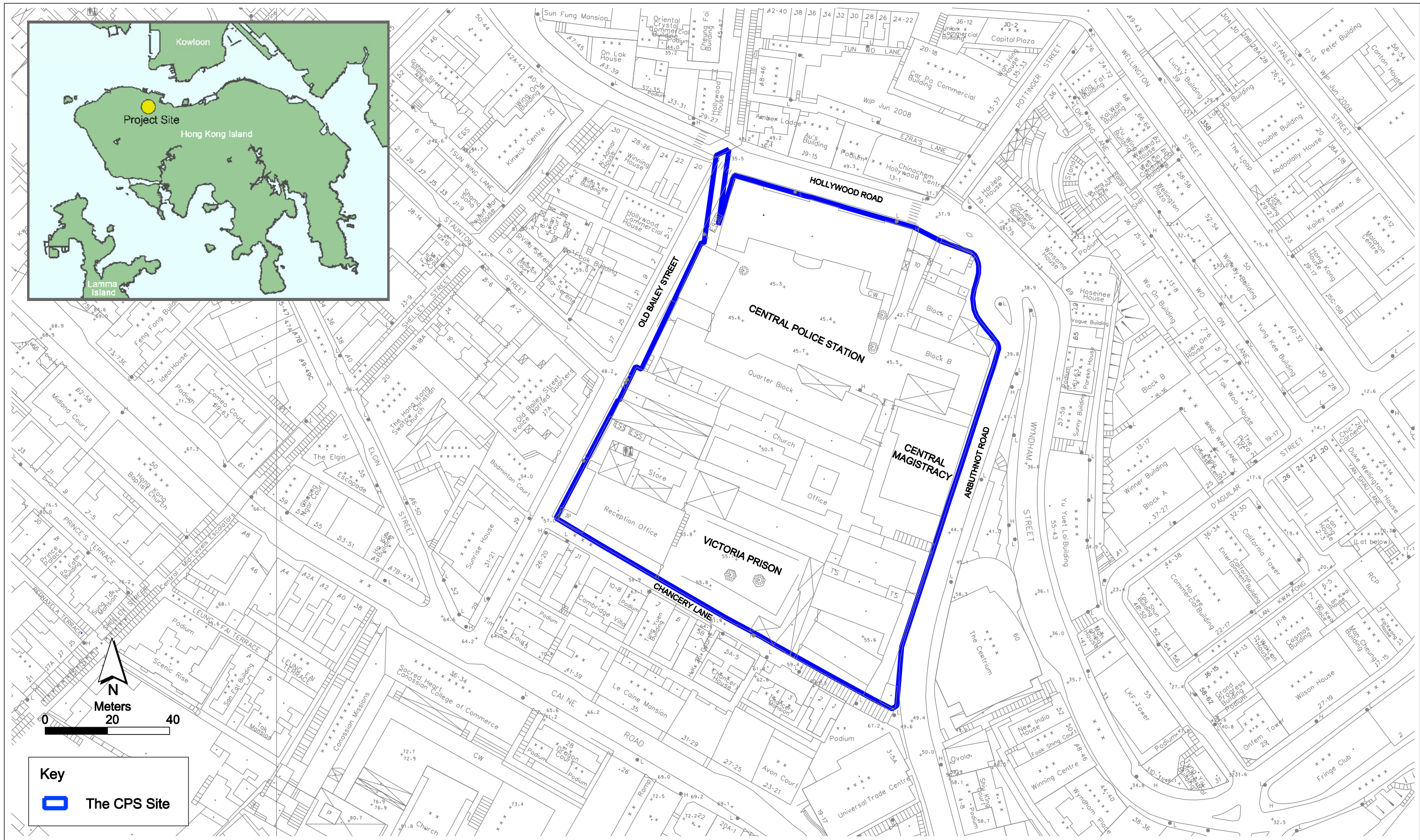
One complaint was received during the reporting period. A complaint on improper storage of construction waste was received by the EPD on 29 January 2018 and transferred to the ET on 2 February 2018. The complaint investigation is under progress and the findings will be reported in the next reporting period.

No summons/prosecution was received during the reporting period.

The ET will keep track on the EM&A programme to ensure compliance of environmental requirements and the proper implementation of all necessary mitigation measures.

Annex A

Locations of Works Areas and the Surroundings



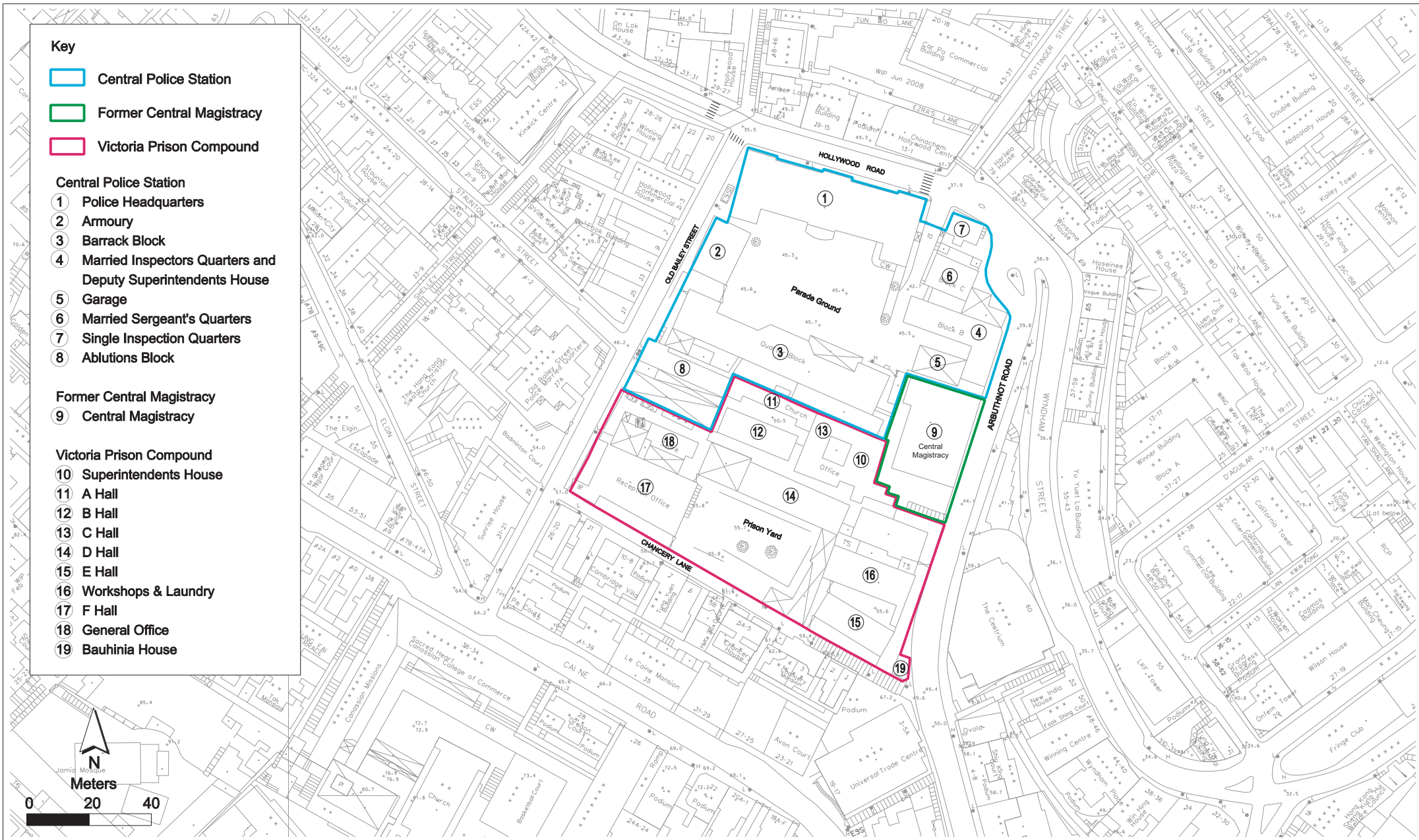
Annex A1

Project Location

**Environmental
Resources
Management**



賽馬會文物保育有限公司
The Jockey Club CPS Limited



Annex A2

Declared Monuments within the Project Site

**Environmental
Resources
Management**

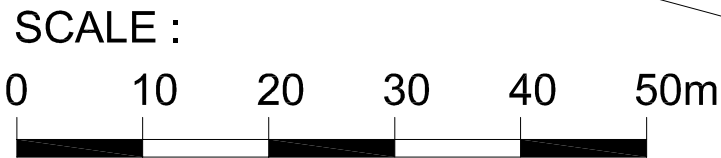


賽馬會文物保育有限公司
The Jockey Club CPS Limited



LEGEND

1. E&M Installation / Opening / Conduit Transformer delivery and installation
2. Excavation
3. Internal Building Works
4. Permanent Steel Works Erection
5. Upgrading
6. Roof Replacement Works / New Roof / Repair
7. Basement Construction
8. Structure A&A Works
9. Repair Works to Timber Window, Door, Structure, Floor and Metal Elements
10. Demolition Works
11. Facade Works / Link Bridge Repair
12. New Structure Construction
13. Balcony Repair
14. Paint Stripping and Plastering Works
15. Core Wall Construction
16. Utilities Diversion and Carriageway
17. PBR
18. Removal of Needle Beams
19. U/G Drainage
20. Service trench construction
21. Demolition of concrete block
22. New Balcony Construction
23. Construction of terminal Manhole
24. Emergency Works for collapsed building and BD inspection
25. Fitting Out Works / E&M Fixing
26. Enhancement Works

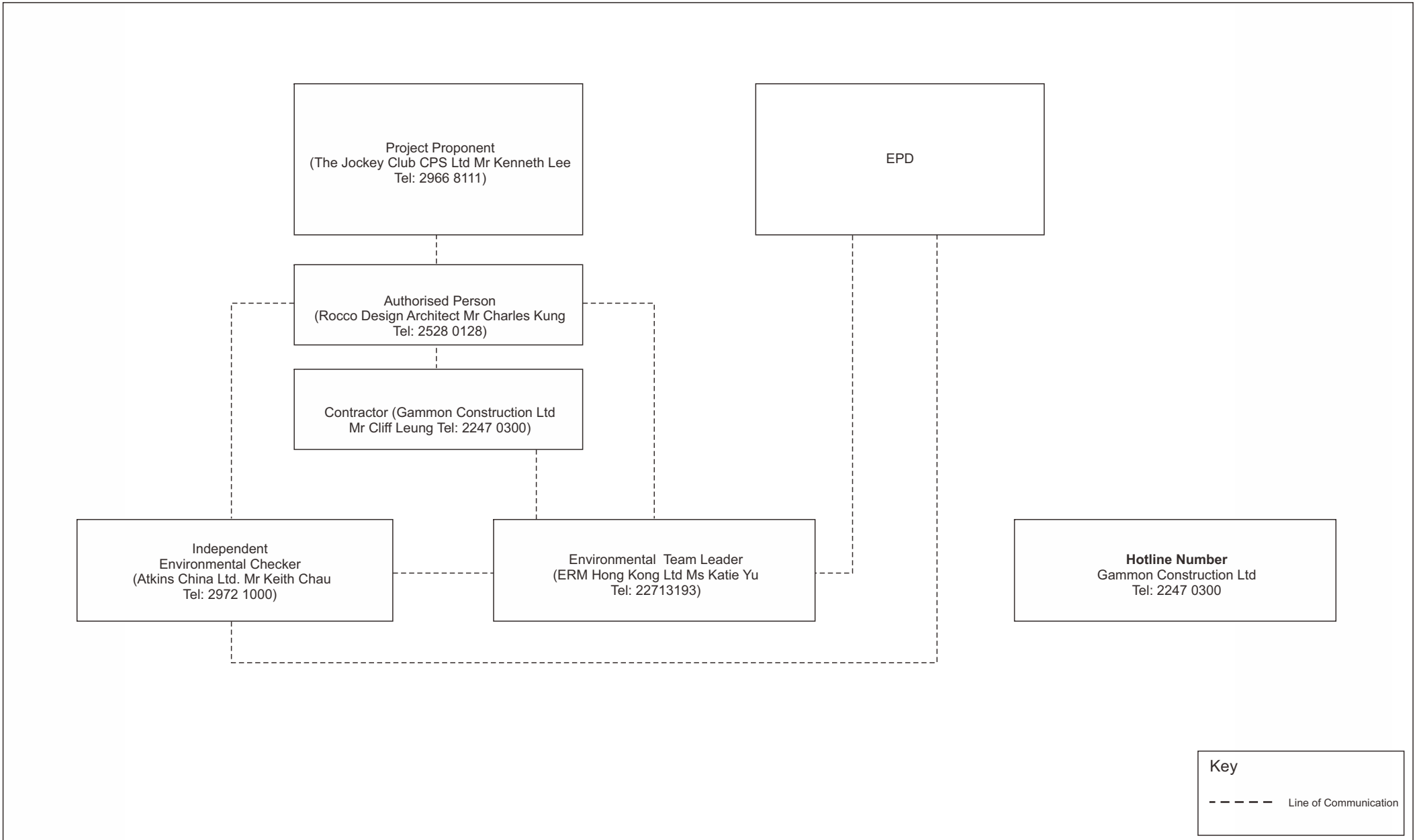


Marked for Enquiry & Complaint log (CPS/E&C/09)

Annex A3 Site Layout Plan marked with Works (Jan - 2018)

Annex B

Project Organization Chart and Contact Detail



Key
 - - - - - Line of Communication



Annex C

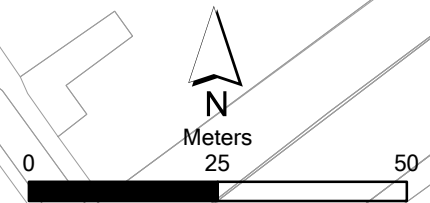
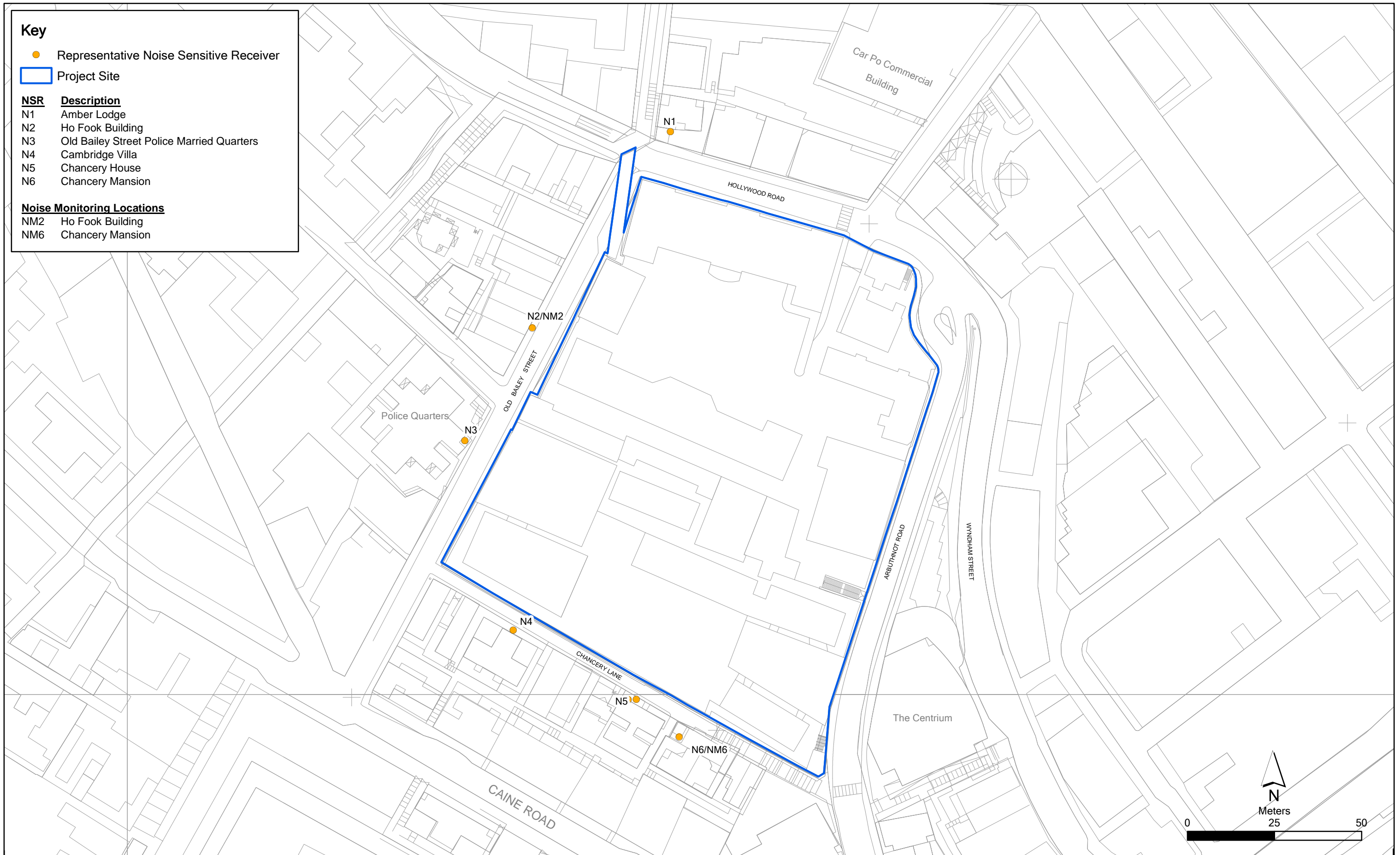
Locations of Noise
Monitoring Stations and
Noise Sensitive Receivers

Key

- Representative Noise Sensitive Receiver
- ▭ Project Site

NSR	Description
N1	Amber Lodge
N2	Ho Fook Building
N3	Old Bailey Street Police Married Quarters
N4	Cambridge Villa
N5	Chancery House
N6	Chancery Mansion

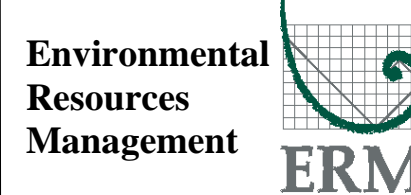
Noise Monitoring Locations	
NM2	Ho Fook Building
NM6	Chancery Mansion



Annex C

Location of Representative Noise Sensitive Receivers and Noise Monitoring Locations

File: 0095646_NSR_NM_May2012.mxd
Date: 09/05/2012



賽馬會文物保育有限公司
The Jockey Club CPS Limited

Annex D

Monitoring Schedule of the Reporting Period and Next Month

**Central Police Station Compound Conservation and Revitalisation
(Ho Fook Building - NM2 & Chancery Mansion - NM6)
Monitoring Schedule for Reporting Month - January 2018**

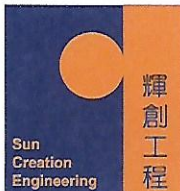
Sunday	Monday	Tuesday	Wednesday	Thursday	Friday	Saturday
	01-Jan	02-Jan	03-Jan	04-Jan	05-Jan	06-Jan
	Public Holiday			Noise Monitoring at NM2 & NM6		
07-Jan	08-Jan	09-Jan	10-Jan	11-Jan	12-Jan	13-Jan
			Noise Monitoring at NM2 & NM6			
14-Jan	15-Jan	16-Jan	17-Jan	18-Jan	19-Jan	20-Jan
		Noise Monitoring at NM2 & NM6				
21-Jan	22-Jan	23-Jan	24-Jan	25-Jan	26-Jan	27-Jan
	Noise Monitoring at NM2 & NM6				Noise Monitoring at NM2 & NM6	
28-Jan	29-Jan	30-Jan	31-Jan			

**Central Police Station Compound Conservation and Revitalisation
(Ho Fook Building - NM2 & Chancery Mansion - NM6)
Monitoring Schedule for Next Reporting Month - February 2018**

Sunday	Monday	Tuesday	Wednesday	Thursday	Friday	Saturday
				01-Feb	02-Feb	03-Feb
				Noise Monitoring at NM2 & NM6		
04-Feb	05-Feb	06-Feb	07-Feb	08-Feb	09-Feb	10-Feb
			Noise Monitoring at NM2 & NM6			
11-Feb	12-Feb	13-Feb	14-Feb	15-Feb	16-Feb	17-Feb
		Noise Monitoring at NM2 & NM6		Noise Monitoring at NM2 & NM6	Public Holiday	Public Holiday
18-Feb	19-Feb	20-Feb	21-Feb	22-Feb	23-Feb	24-Feb
	Public Holiday		Noise Monitoring at NM2 & NM6			
25-Feb	26-Feb	27-Feb	28-Feb			
		Noise Monitoring at NM2 & NM6				

Annex E

Calibration Reports for Calibrators and Sound Level Meters



輝創工程有限公司

Sun Creation Engineering Limited

Calibration and Testing Laboratory

Certificate of Calibration 校正證書

Certificate No. : C176743

證書編號

ITEM TESTED / 送檢項目 (Job No. / 序引編號 : IC17-2654) Date of Receipt / 收件日期 : 14 November 2017

Description / 儀器名稱 : Acoustic Calibrator

Manufacturer / 製造商 : Casella

Model No. / 型號 : CEL-120/1

Serial No. / 編號 : 3421612

Supplied By / 委託者 : Envirotech Services Co.

Room 113, 1/F, My Loft, 9 Hoi Wing Road, Tuen Mun,
New Territories, Hong Kong

TEST CONDITIONS / 測試條件

Temperature / 溫度 : $(23 \pm 2)^\circ\text{C}$

Relative Humidity / 相對濕度 : $(55 \pm 20)\%$

Line Voltage / 電壓 : ---

TEST SPECIFICATIONS / 測試規範

Calibration check

DATE OF TEST / 測試日期 : 2 December 2017

TEST RESULTS / 測試結果

The results apply to the particular unit-under-test only.

The results do not exceed manufacturer's specification.

The results are detailed in the subsequent page(s).

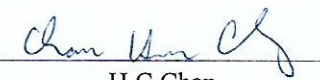
The test equipment used for calibration are traceable to National Standards via :

- The Government of The Hong Kong Special Administrative Region Standard & Calibration Laboratory
- Agilent Technologies / Keysight Technologies
- Rohde & Schwarz Laboratory, Germany
- Fluke Everett Service Center, USA

Tested By
測試


K C Lee
Engineer

Certified By
核證


H C Chan
Engineer

Date of Issue
簽發日期

4 December 2017

The test equipment used for calibration are traceable to the Nation Standards as specified in this certificate. This certificate shall not be reproduced except in full, without the prior written approval of this laboratory.

本證書所載校正用之測試器材均可溯源至國際標準。局部複印本證書需先獲本實驗室書面批准。

Sun Creation Engineering Limited - Calibration & Testing Laboratory

c/o 4/F, Tsing Shan Wan Exchange Building, 1 Hing On Lane, Tuen Mun, New Territories, Hong Kong

輝創工程有限公司 - 校正及檢測實驗室

c/o 香港新界屯門興安里一號青山灣機樓四樓

Tel 電話: 2927 2606

Fax 傳真: 2744 8986

E-mail 電郵: callab@suncreation.com

Website 網址: www.suncreation.com

Page 1 of 2

Certificate of Calibration

校正證書

Certificate No. : C176743
證書編號

1. The unit-under-test (UUT) was allowed to stabilize in the laboratory for over 12 hours before the commencement of the test.
2. The results presented are the mean of 3 measurements at each calibration point.
3. Test equipment :

<u>Equipment ID</u>	<u>Description</u>	<u>Certificate No.</u>
CL130	Universal Counter	C173864
CL281	Multifunction Acoustic Calibrator	PA160023
TST150A	Measuring Amplifier	C161175

4. Test procedure : MA100N.

5. Results :

5.1 Sound Level Accuracy

UUT Nominal Value	Measured Value (dB)	Mfr's Spec. (dB)	Uncertainty of Measured Value (dB)
94 dB, 1 kHz	94.0	± 0.25	± 0.2
114 dB, 1 kHz	114.1		

5.2 Frequency Accuracy

UUT Nominal Value (kHz)	Measured Value (kHz)	Mfr's Spec.	Uncertainty of Measured Value (Hz)
1	1.000 0	1 kHz ± 5 Hz	± 0.1

Remark : The uncertainties are for a confidence probability of not less than 95 %.

Note :

Only the original copy or the laboratory's certified true copy is valid.

The values given in this Certificate only relate to the values measured at the time of the test and any uncertainties quoted will not include allowance for the equipment long term drift, variations with environment changes, vibration and shock during transportation, overloading, mis-handling, or the capability of any other laboratory to repeat the measurement. Sun Creation Engineering Limited shall not be liable for any loss or damage resulting from the use of the equipment.



輝創工程有限公司

Sun Creation Engineering Limited

Calibration and Testing Laboratory

Certificate of Calibration

校正證書

Certificate No. : C176744

證書編號

ITEM TESTED / 送檢項目 (Job No. / 序引編號 : IC17-2654) Date of Receipt / 收件日期 : 14 November 2017

Description / 儀器名稱 : Sound Level Meter
Manufacturer / 製造商 : Casella
Model No. / 型號 : CEL-633A
Serial No. / 編號 : 3521757
Supplied By / 委託者 : Envirotech Services Co.
Room 113, 1/F, My Loft, 9 Hoi Wing Road, Tuen Mun,
New Territories, Hong Kong

TEST CONDITIONS / 測試條件

Temperature / 溫度 : $(23 \pm 2)^{\circ}\text{C}$ Relative Humidity / 相對濕度 : $(55 \pm 20)\%$
Line Voltage / 電壓 : ---

TEST SPECIFICATIONS / 測試規範

Calibration check

DATE OF TEST / 測試日期 : 2 December 2017


TEST RESULTS / 測試結果

The results apply to the particular unit-under-test only.
The results do not exceed manufacturer's specification.
The results are detailed in the subsequent page(s).

The test equipment used for calibration are traceable to National Standards via :

- The Government of The Hong Kong Special Administrative Region Standard & Calibration Laboratory
- Agilent Technologies / Keysight Technologies
- Rohde & Schwarz Laboratory, Germany
- Fluke Everett Service Center, USA

Tested By
測試


K C Lee
Engineer

Certified By
核證


H C Chan
Engineer

Date of Issue : 4 December 2017
簽發日期

The test equipment used for calibration are traceable to the Nation Standards as specified in this certificate. This certificate shall not be reproduced except in full, without the prior written approval of this laboratory.

本證書所載校正用之測試器材均可溯源至國際標準。局部複印本證書需先獲本實驗室書面批准。

Sun Creation Engineering Limited - Calibration & Testing Laboratory

c/o 4/F, Tsing Shan Wan Exchange Building, 1 Hing On Lane, Tuen Mun, New Territories, Hong Kong

輝創工程有限公司 - 校正及檢測實驗室

c/o 香港新界屯門興安里一號青山灣機樓四樓

Tel 電話: 2927 2606

Fax 傳真: 2744 8986

E-mail 電郵: callab@suncreation.com

Website 網址: www.suncreation.com

Certificate of Calibration

校正證書

Certificate No. : C176744
證書編號

- The unit-under-test (UUT) was allowed to stabilize in the laboratory for over 12 hours, and switched on to warm up for over 10 minutes before the commencement of the test.
- Self-calibration using the Casella Acoustic Calibrator CEL-120/1, S/N : 3421612 was performed before the test.
- The results presented are the mean of 3 measurement at each calibration point.
- Test equipment :

<u>Equipment ID</u>	<u>Description</u>	<u>Certificate No.</u>
CL280	40 MHz Arbitrary Waveform Generator	C170048
CL281	Multifunction Acoustic Calibrator	PA160023

- Test procedure : MA101N.

- Results :

6.1 Sound Pressure Level

6.1.1 Reference Sound Pressure Level

UUT Setting		Applied Value		UUT Reading (dB)	IEC 61672 Class 1 Spec. (dB)
Time Weighting	Frequency Weighting	Level (dB)	Freq. (kHz)		
L _F	A	114.00	1	114.0	± 1.1

6.1.2 Linearity

UUT Setting		Applied Value		UUT Reading (dB)
Time Weighting	Frequency Weighting	Level (dB)	Freq. (kHz)	
L _F	A	114.00	1	114.0 (Ref.)
		104.00		103.9
		94.00		93.8

IEC 61672 Class 1 Spec. : ± 0.6 dB per 10 dB step and ± 1.1 dB for overall different.

6.2 Time Weighting

UUT Setting		Applied Value		UUT Reading (dB)	IEC 61672 Class 1 Spec. (dB)
Time Weighting	Frequency Weighting	Level (dB)	Freq. (kHz)		
L _F	A	114.00	1	114.0	Ref.
L _S				114.0	± 0.3

The test equipment used for calibration are traceable to the Nation Standards as specified in this certificate. This certificate shall not be reproduced except in full, without the prior written approval of this laboratory.

本證書所載校正用之測試器材均可溯源至國際標準。局部複印本證書需先獲本實驗室書面批准。

Certificate of Calibration

校正證書

Certificate No. : C176744

證書編號

6.3 Frequency Weighting

6.3.1 A-Weighting

UUT Setting		Applied Value		UUT Reading (dB)	IEC 61672 Class 1 Spec. (dB)
Time Weighting	Frequency Weighting	Level (dB)	Freq.		
L _F	A	94.00	63 Hz	87.7	-26.2 ± 1.5
			125 Hz	97.8	-16.1 ± 1.5
			250 Hz	105.3	-8.6 ± 1.4
			500 Hz	110.8	-3.2 ± 1.4
			1 kHz	114.0	Ref.
			2 kHz	115.2	+1.2 ± 1.6
			4 kHz	114.9	+1.0 ± 1.6
			8 kHz	112.6	-1.1(+2.1 ; -3.1)
			12.5 kHz	108.4	-4.3(+3.0 ; -6.0)

6.3.2 C-Weighting

UUT Setting		Applied Value		UUT Reading (dB)	IEC 61672 Class 1 Spec. (dB)
Time Weighting	Frequency Weighting	Level (dB)	Freq.		
L _F	C	94.00	63 Hz	113.2	-0.8 ± 1.5
			125 Hz	113.8	-0.2 ± 1.0
			250 Hz	114.0	0.0 ± 1.0
			500 Hz	114.0	0.0 ± 1.0
			1 kHz	114.0	Ref.
			2 kHz	113.8	-0.2 ± 1.0
			4 kHz	113.1	-0.8 ± 1.0
			8 kHz	110.7	-3.0 (+1.5 ; -3.0)
			12.5 kHz	106.5	-6.2 (+3.0 ; -6.0)

The test equipment used for calibration are traceable to the Nation Standards as specified in this certificate. This certificate shall not be reproduced except in full, without the prior written approval of this laboratory.

本證書所載校正用之測試器材均可溯源至國際標準。局部複印本證書需先獲本實驗室書面批准。



輝創工程有限公司

Sun Creation Engineering Limited

Calibration and Testing Laboratory

Certificate of Calibration

校正證書

Certificate No. : C176744

證書編號

Remarks : - UUT Microphone Model No. : CEL-251 & S/N : 1950

- Mfr's Spec. : IEC 61672 Class 1

- Uncertainties of Applied Value :

114 dB	: 63 Hz - 125 Hz	: ± 0.45 dB
	250 Hz - 500 Hz	: ± 0.40 dB
	1 kHz	: ± 0.30 dB
	2 kHz - 4 kHz	: ± 0.45 dB
	8 kHz	: ± 0.55 dB
	12.5 kHz	: ± 0.80 dB
104 dB	: 1 kHz	: ± 0.10 dB (Ref. 114 dB)
94 dB	: 1 kHz	: ± 0.10 dB (Ref. 114 dB)

- The uncertainties are for a confidence probability of not less than 95 %.

Note :

Only the original copy or the laboratory's certified true copy is valid.

The values given in this Certificate only relate to the values measured at the time of the test and any uncertainties quoted will not include allowance for the equipment long term drift, variations with environment changes, vibration and shock during transportation, overloading, mis-handling, or the capability of any other laboratory to repeat the measurement. Sun Creation Engineering Limited shall not be liable for any loss or damage resulting from the use of the equipment.

The test equipment used for calibration are traceable to the Nation Standards as specified in this certificate. This certificate shall not be reproduced except in full, without the prior written approval of this laboratory.

本證書所載校正用之測試器材均可溯源至國際標準。局部複印本證書需先獲本實驗室書面批准。

Sun Creation Engineering Limited Calibration & Testing Laboratory

c/o 4 F, Tsing Shan Wan Exchange Building, 1 Hing On Lane, Tuen Mun, New Territories, Hong Kong

輝創工程有限公司 校正及檢測實驗室

c/o 香港新界屯門興安里一號青山灣機樓四樓

Tel/電話: 2927 2606

Fax/傳真: 2744 8986

E-mail/電郵: callab@suncreation.com

Website/網址: www.suncreation.com

Page 4 of 4

Annex F

Event / Action Plans for Noise

Annex F Event and Action Plan for Noise

Event	Action			
	Environmental Team (ET)	Independent Environmental Checker (IEC)	Authorised Person (AP)	Contractor
Action Level	<ol style="list-style-type: none"> 1. Notify IEC and Contractor; 2. Carry out investigation; 3. Report the results of investigation to the IEC, AP and Contractor; 4. Discuss with the Contractor and formulate remedial measures; 5. Increase monitoring frequency to check mitigation effectiveness. 	<ol style="list-style-type: none"> 1. Review the analysed results submitted by the ET; 2. Review the proposed remedial measures by the Contractor and advise the AP accordingly; 3. Supervise the implementation of remedial measures. 	<ol style="list-style-type: none"> 1. Confirm receipt of notification of failure in writing; 2. Notify Contractor; 3. Require Contractor to proposed remedial measures for the analysed noise problem; 4. Ensure remedial measures are properly implemented. 	<ol style="list-style-type: none"> 1. Submit noise mitigation proposals to IEC; 2. Implement noise mitigation proposals.
Limit Level	<ol style="list-style-type: none"> 1. Identify source; 2. Inform IEC and AP; 3. Repeat measurements to confirm findings; 4. Increase monitoring frequency; 5. Carry out analysis of Contractor's working procedures to determine possible mitigation to be implemented; 6. Inform IEC, AP and EPD the causes and actions taken for the exceedances; 7. Assess effectiveness of Contractor's remedial actions and keep IEC, EPD and AP informed of the results; 8. If exceedance stops, cease additional monitoring. 	<ol style="list-style-type: none"> 1. Discuss amongst AP, ET, and Contractor on the potential remedial actions; 2. Review Contractors remedial actions whenever necessary to assure their effectiveness and advise the AP accordingly; 3. Supervise the implementation of remedial measures. 	<ol style="list-style-type: none"> 1. Confirm receipt of notification of failure in writing; 2. Notify Contractor; 3. Require Contractor to propose remedial measures for the analysed noise problem; 4. Ensure remedial measures properly implemented; 5. If exceedance continues, consider what portion of the work is responsible and instruct the Contractor to stop that portion of work until the exceedance is abated. 	<ol style="list-style-type: none"> 1. Take immediate action to avoid further exceedance; 2. Submit proposals for remedial actions to IEC within 3 working days of notification; 3. Implement the agreed proposals; 4. Resubmit proposals if problem still not under control; 5. Stop the relevant portion of works as determined by the AP until the exceedance is abated.

Annex G

Summary of Implementation Status

Annex G Implementation Schedule for Environmental Protection Measures

EIA Ref.	EM&A Ref.	Recommended Mitigation Measures	Location	When to Implement the Measure	Status
<i>Cultural Heritage</i>					
S3.9.1	S3.2.6	Subject to the outcome of the archaeological investigation, if archaeological deposits are identified to be impacted by the proposed development, appropriate mitigation measures will be recommended and agreed with AMO.	In accordance with the recommendations in the Archaeological Action Plan (AAP) issued on 21 Dec 11 and approved on 30 Dec 11 by AMO	During detailed design and construction	√
S3.9.2	S3.3.1	<u>Vibration Monitoring</u> A baseline condition survey and baseline vibration impact will be conducted by a specialist for the approval of AMO and Buildings Department prior to commencement of the construction works to define the vibration control limits and recommend a vibration monitoring proposal for the concerned historic buildings and structures in and outside CPS for AMO's prior approval before commencement of the construction works.	Historic buildings and structures in CPS, the granite walls at Old Bailey Street and the proposed Grade 3 historic building (No. 20 Hollywood Road)	During detailed design and construction	√
S3.9.2	S3.3.3	<u>Compliance of the Approved Measures and Auditing</u> Staff training by an experience building conservation expert or relevant competent person(s) in the environmental team of the project should be provided to the on-site staffs, contractors, sub-contractors and workers of the project before commencement of works to ensure their full understanding of the approved protection schedule, restoration proposal and work methodologies related to cultural heritage, and their respective responsibilities in the implementation of the environmental protection measures. Regular site audit for cultural heritage should be carried out in the construction phase by an experience building conservation expert in the environmental team ("the Heritage Checker") to investigate the site practice of the contractors and workers and their compliance of the approved work methodologies with respect of conservation works, mitigations for cultural heritage and any related works. A detailed	Whole site	Prior to and during construction	<>

EIA Ref.	EM&A Ref.	Recommended Mitigation Measures	Location	When to Implement the Measure	Status
		<p>proposal of the regular audit such as methodology (e.g. performance and monitoring indicators, control tools, frequency of the audit, etc.) and the conservation professionals to be engaged should be agreed with AMO prior to work commencement.</p> <p>The Heritage Checker shall also attend the regular site meetings with AMO and report the compliance and effectiveness of the mitigation measures for cultural heritage.</p>			
S3.9.3	S3.3.4	<p><u>Archival Recording</u></p> <p>An archival recording should be conducted to provide a detailed reference for the update of the Conservation Management Plan and inventory of historical features of the monuments, the preparation of as-built drawings showing the condition of the historic buildings and structures after the completion of the construction works. These archival records will be a reference source for future maintenance of the character defining elements, conservation of the monuments, interpretation and conservation education of the Site. The archival recording shall include but not limit to the video and photographic recording on the detailed process of the repair trials for different kinds of historical features, conservation works of character defining elements and historic fabrics of the monuments, and a written records of any new changes to the detailed design made in the construction phase illustrate with photos and drawings. A full set of the archives records (including both hard and soft copies) should be submitted to the AMO for approval after the work completion for record purpose. Any new findings related to the conservation of built heritage in the Site identified during the detailed design stage and construction phases shall be properly recorded in details for notification to the AMO and update of the Conservation Management Plan.</p>	Whole Site	During detailed design, construction and prior to operation	N/A – Archival recording will be conducted at later stage.
S3.7.3	-	<p><u>General Construction Methods</u></p> <p>Prior to the commencement of the modification/refurbishment works at an existing building or structure (e.g. masonry walls near the Old Bailey Wing), a site survey will be carried out by the design team, and all building dimensions and levels of the building/structure shown will be</p>	Whole site	During construction	At around 10:05pm on 29 May 2016, the northwest corner of Block 4 partially collapsed. The collapsed area includes northwest corner roof, west elevation façade wall, north elevation façade wall west part, 1/F and 2/F verandah west part, 2/F

EIA Ref.	EM&A Ref.	Recommended Mitigation Measures	Location	When to Implement the Measure	Status
		checked and confirmed by the contractor. Non-percussive piling methods will be adopted for the construction of the foundation for the new buildings. Protective and precaution measures to the existing buildings and structure adjacent to the work area (including the proposed Grade 3 historic building (No. 20 Hollywood road) and the granite boundary walls between the Ablutions Block of the police station (building no. 08) and the General Office of the prison area (building no. 18) which is adjacent to the new construction of the Old Bailey Wing and for an old granite walls at Old Bailey Street within 15m from the new construction) shall be provided to avoid damage to the existing features and to safeguard the structural integrity during the course of construction. Small scale handheld pneumatic tools with minimal vibration impact to the existing buildings/ structures are selected so as to have a better logistic and handling at the existing buildings and structures, which usually have only narrow working areas. In cases of the local demolition of structural elements, demountable platforms will be erected to temporarily support the affected area and divert the loading from above to avoid instability and create excessive cracking and settlement of the building/structure.			west balcony, floor structure in room 04/5/03. Temporary propping has been undertaken to prevent further collapse. Construction works have resumed except Block 4.
S3.7.1 & 3.7.2	-	Implementation and update of the Conservation Management Plan (CMP). Any new findings related to the conservation of the built heritage in the site identified during the detailed design and construction stage shall be properly recorded in details for the notification to the AMO and update in the CMP. After the construction, a cartographic and photographic recording on the restored historic buildings, historic features and the site shall be conducted and the following records shall be included into the CMP as appendices for updating and record purpose: <ul style="list-style-type: none"> • one set of measured drawings and photographic records showing the as-built condition of historic buildings and structures; and • an updated inventory list of the historic features together with the cross referenced location plans and photo records. One set of updated CMP shall be submitted to the AMO for approval before the operation stage of the project.	Whole site	During detailed design, construction, post-construction and operation	√ - CMP was implemented during the reporting month. There were no updates for the CMP.

EIA Ref.	EM&A Ref.	Recommended Mitigation Measures	Location	When to Implement the Measure	Status
<i>Landscape & Visual</i>					
S4.7.27	-	<p><u><i>In-situ Tree Protection - Cordon Zone (CZ)</i></u></p> <p>Cordon off each tree along its drip line (below the crown) with a chain-link fencing of 2.5 m height with padlocked gate, allowing limited access to area only to authorized persons. The base of the perimeter fence will be sealed up to 30 cm height to ensure that no construction drainage water will enter. If grouting is to be conducted less than 5 m from the edge of the CZ, a waterproof membrane will be installed below the ground to a depth of 1.5 m on the outer edge of the CZ to prevent the subsurface lateral movement of contaminated construction wastewater from intruding the soil inside the CZ.</p>	Whole site	During construction	<> The chain-link fencing for the retained trees has been removed to enable the laying of floor slab and repairing of the planters. A tree protection zone around the planter of each tree has been provided. Barricades are set up for Tree 6, 7, 8 and 9 and the barricaded zone is clear of construction materials or equipment. The vicinity of Tree 5 is also clear of construction materials or equipment. A temporary shelter has been erected around Tree 11. No major construction works in the vicinity of the trees or within the CPS site are being carried out.
S4.7.2	-	<p><u><i>In-situ Tree Protection - Advanced & Phased Root Pruning</i></u></p> <p>All edges of the CZ that will be affected by excavation will undergo root pruning by a trained arborist or horticulturist, in advance of the earth work. The entire affected length of the CZ, plus 3 m additional length at both ends, shall be designated as the root pruning segment (RPS). The require trench will be opened manually in the RPS, be 1.5 m deep and 1 m wide, and closed on the same day after pruning with a good soil mix. All roots with a diameter >20 mm encountered in the course of trench opening shall be cut flushed with the inner wall of the trench. If the RPS exceeds one-quarter of the CZ circumference, the root pruning should be conducted in two stages. Each phase will tackle half of the RPS length. After the first phase, the tree will be allowed to recuperate for not less than four months before the second phase root pruning is conducted. The RPS shall be protected by sheet piles along the outer edge. The rig that installs the piles and the associated operations shall not intrude into the CZ or injure the protected tree.</p>	Whole site	During construction	N/A – no root pruning has been conducted yet
S4.7.2	-	<p><u><i>In-situ Tree Protection - Foliage cleansing system</i></u></p> <p>A sprinkler cleansing system will be installed either in the crown of the</p>	Whole site	During construction	N/A – The sprinkler cleansing system has been removed as major dust-generating works within the

EIA Ref.	EM&A Ref.	Recommended Mitigation Measures	Location	When to Implement the Measure	Status
		tree or at a suitable location on an adjacent building to provide the means to wash the foliage of the accumulated dust when necessary, particularly in the dry season.			CPS site have been completed.
S4.7.2	S4	<p><u>In-situ Tree Protection - Monthly inspection</u></p> <p>Monthly inspection of affected trees by an experienced and appropriately trained arborist or horticulturist using Form 1 – Tree Group Inspection Form and Form 2 – Tree Risk Assessment Form developed by Development Bureau (http://www.trees.gov.hk/en/doc/TRAGuideline_July2010version_combine.pdf) or a form designed by a tree expert and approved by Tree Management Office. All irregularities that deviate from the recommended tree protection measures, or could impose deleterious impacts on the protected trees, must be reported to the authorized person or the tree expert within two days.</p>	Whole site	During construction	√
S4.7.2	-	<p><u>Light Control</u></p> <p>Control of night-time lighting shall be implemented to minimise impact to adjacent VSRs.</p>	Whole site	During construction and operation	√
S4.7.2	S4	<p><u>Compensatory Tree Planting</u></p> <p>A new planting site has been identified for compensatory tree planting in the Parade Ground. The planting is to compensate for felling of T10 and T10a. The existing tree site will be enlarged to become a wide tree strip to accommodate the compensatory trees. The entire strip of land that accommodates T1 to T4 should be revamped to improve the soil condition for future tree growth.</p> <p>The new tree strip should be 4 m wide and covered by porous unit pavers to permit the entry of rain and irrigation water and air exchange between the soil and the atmosphere. The unit pavers should be supported by small columns to create a vault-like structure so as to avoid compaction of the underlying soil due to pedestrian trampling. The unit pavers will be movable to provide access to the soil</p>	At identified compensatory tree planting location at the Parade Ground	During detailed design and construction	√ - Planters of the compensatory trees are being built in the Parade Ground during the reporting period.

EIA Ref.	EM&A Ref.	Recommended Mitigation Measures	Location	When to Implement the Measure	Status
		<p>underneath so that fertilizers and conditioners could be added on a regular basis. The air conditioner unit currently located near the proposed planting site should also be removed. This new tree planting site should also be provided with proper irrigation.</p> <p>Pursuant to the "Environment, Transport and Works Bureau Technical Circular (Works) No. 3/2006 Tree Preservation", the compensation ratio should preferably be 1:1 according to trunk girth. An aggregate DBH of the new trees would be 60cm, the rate of compensation is beyond the requirements</p> <p>The replacement trees should be planted in accordance with the requirement of the landscape proposal approved by the Planning Department.</p>			
S4.7.2	S4	<p><u>Existing Granite Revetment Wall</u></p> <p>The inner stone face along the southern wall of the Site shall be preserved to its original historical appearance.</p>	Inner Southern Wall	During detailed design and construction	√
S4.7.2	-	<p><u>New Custom Paving</u></p> <p>New, Patterned, High Quality, Concrete Custom Pavers should replace most of the existing paving in the open spaces.</p>	Whole site	During detailed design and construction	√
S4.7.2	S4	<p><u>In-situ Tree Protection - Quarterly inspection</u></p> <p>Quarterly Inspection of affected and newly planted trees by an experienced and appropriately trained arborist or horticulturist using Form 1 – Tree Group Inspection Form and Form 2 – Tree Risk Assessment Form developed by Development Bureau (http://www.trees.gov.hk/en/doc/TRAGuideline_July2010version_combine.pdf) or a form designed by a tree expert and approved by Tree Management Office for a period of 12 months after construction.</p>	Whole site	During post construction and operation	N/A – The quarterly inspection will be conducted at later stage.
Noise					

EIA Ref.	EM&A Ref.	Recommended Mitigation Measures	Location	When to Implement the Measure	Status
S5.9	-	<p>The following site practices should be followed during the construction of the Project:</p> <ul style="list-style-type: none"> • Only well-maintained plant will be operated on-site and plant will be serviced regularly during the construction phase; • Silencers or mufflers on construction equipment will be utilised and will be properly maintained during the construction phase; • Mobile plant, if any, will be sited as far away from NSRs as possible; • Machines and plant (such as trucks) that may be in intermittent use will be shut down between work periods or will be throttled down to a minimum; • Plant known to emit noise strongly in one direction will, wherever possible, be orientated so that the noise is directed away from the nearby NSRs; and • Material stockpiles and other structures will be effectively utilised, wherever practicable, in screening noise from on-site construction activities. 	Whole Site	During construction	√
S5.9	-	Noise insulating sheet would be adopted for certain PME (eg drill rig, excavator for demolition of existing structures, etc). The noise insulating sheet should be deployed such that there would be no opening or gaps on the joints.	Whole Site	During construction	√
S5.9	-	Use temporary noise barriers to mitigate the noise impact arising from the construction works, particularly for low-rise NSRs. Movable noise barriers of 3 m in height with skid footing should be used and located within a few metres of stationary plant and mobile plant such that the line of sight to the NSR is blocked by the barriers. The length of the barrier should be at least five times greater than its height. The noise barrier material should have a superficial surface density of at least 7 kg m ⁻² and have no openings or gaps.	Whole Site	During construction	√
S5.9	-	Use quiet PME as far as practicable to mitigate the construction noise impact.	Whole Site	During construction	√
S5.9	-	Scheduling of construction activities with identified grouping of PMEs.	Whole Site	During construction	√

EIA Ref.	EM&A Ref.	Recommended Mitigation Measures	Location	When to Implement the Measure	Status
S5.11	S5	Weekly noise monitoring will be undertaken at the representative NSRs N2 Ho Fook Building and N5 Chancery House. Monthly site audits will be conducted to ensure that the recommended mitigation measures are properly implemented during the construction stage.	Whole Site	During construction	√
<i>Air Quality</i>					
S6.8.1	-	Dust control measures stipulated in the <i>Air Pollution Control (Construction Dust) Regulation</i> will be implemented during the construction phase to control the potential fugitive dust emissions.	Whole Site	During construction	√
S6.8.1	-	In particular: Temporary stockpiles of dusty materials will be either covered entirely by impervious sheets; placed in an area sheltered on the top and three sides; or sprayed with water to maintain the entire surface wet at all the time.	Whole Site	During construction	√
S6.8.1	-	Impervious sheet will be provided for skip hoist for material transport.	Whole Site	During construction	√
S6.8.1	-	Vehicle washing facilities will be provided at the designated vehicle exit points.	Whole Site	During construction	√
S6.8.1	-	Every vehicle will be washed to remove any dusty materials from its chassis and wheels immediately before leaving the worksite.	Whole Site	During construction	√
S6.8.1	-	Road sections between vehicle-wash areas and vehicular entrances will be paved.	Whole Site	During construction	√
S6.8.1	-	The load carried by the trucks will be covered entirely to ensure no dust emission from the vehicles.	Whole Site	During construction	√
S6.8.1	-	Hoarding of not less than 2.4m high from ground level will be provided along the Project Site boundary adjoining a road where the new buildings (Old Bailey Wing and Arbuthnot Wing) will be constructed.	Whole Site	During construction	√
S6.8.1	-	Stockpiles of more than 20 bags of cement, dry pulverised fuel ash and dusty construction materials will be covered entirely by impervious sheeting sheltered on top and 3-sides.	Whole Site	During construction	√
S6.8.1	-	An effective dust screen will be provided to enclose scaffolding, if	Whole Site	During	√

EIA Ref.	EM&A Ref.	Recommended Mitigation Measures	Location	When to Implement the Measure	Status
		required, from the ground floor level of building for construction of superstructure of the new buildings.		construction	
S6.8.1	-	Impervious dust screen or sheeting will be implemented for demolition of structures and renovation of outer surfaces of structures that abuts or fronts open area accessible to the public to no less than 1m higher than the highest level of the structure being demolished.	Whole Site	During construction	√
S6.8.1	-	The area at which demolition work takes place will be sprayed with water or dust suppression chemical immediately prior to, during and immediately after the demolition activity.	Area for Demolition Work	During construction	√
S6.8.1	-	ULSD will be used for all construction plant on-site.	Whole Site	During construction	√
S6.8.1	-	The engine of the construction equipment or trucks during idling will be switched off.	Whole Site	During construction	√
S6.8.1	-	Site practices such as regular maintenance and checking of construction equipment deployed on-site will be conducted to avoid any black smoke emissions and to minimise gaseous emissions.	Whole Site	During construction	N/A – Not observed.
S6.10	S3.2	Monthly environmental site audits to ensure that appropriate dust control measures are properly implemented and good construction site practices are adopted throughout the construction period.	Whole Site	During construction	√
<i>Water Quality</i>					
S7.6	-	Channels, earth bunds or sand bag barriers will be provided on site to direct stormwater to silt removal facilities. The design of silt removal facilities will make reference to the guidelines in <i>Appendix A1 of ProPECC PN 1/94</i> . All drainage facilities and erosion and sediment control structures will be inspected on a regular basis and maintained to confirm proper and efficient operation at all times and particularly during rainstorms. Deposited silt and grit will be removed regularly.	Whole Site	During construction	√
S7.6	-	All drainage facilities and erosion and sediment control structures will be regularly inspected and maintained to ensure proper and efficient operation at all times and particularly following rainstorms. Deposited silt and grit will be removed regularly and disposed of.	Whole Site	During construction	N/A – Not observed.

EIA Ref.	EM&A Ref.	Recommended Mitigation Measures	Location	When to Implement the Measure	Status
S7.6	-	Measures will be taken to reduce the ingress of stormwater into excavation areas. If the excavation of the concrete foundation is to be carried out in wet season, they will be dug and backfilled in short sections wherever practicable. Water pumped out from trenches or foundation excavations will be discharged into stormwater drains via silt removal facilities.	Whole Site	During construction	N/A – Not observed.
S7.6	-	Open stockpiles of excavated and demolition materials will be covered with tarpaulin or similar fabric during rainstorms. Measures will be taken to prevent the washing away of residues, chemicals or debris into any drainage system.	Whole Site	During construction	√
S7.6	-	Manholes (including newly constructed ones) will always be adequately covered and temporarily sealed so as to prevent silt, construction materials or debris being washed into the drainage system.	Whole Site	During construction	N/A – Not observed.
S7.6	-	Precautions will be taken when a rainstorm is imminent or forecasted, and actions to be taken during or after rainstorms are summarised in Appendix A2 of <i>ProPECC PN 1/94</i> . Particular attention will be paid to the control of silty surface runoff during storm events.	Whole Site	During construction	N/A – Not observed.
S7.6	-	All temporary and permanent drainage pipes and culverts provided to facilitate runoff discharge will be adequately designed for the controlled release of stormwater flows. All sediment traps will be regularly cleaned and maintained. The temporary diverted drainage will be reinstated to the original condition when the construction work has finished or the temporary diversion is no longer required.	Whole Site	During construction	N/A – Not observed.
S7.6	-	Vehicle and plant servicing areas, vehicle washing bays and lubrication bays will, as far as possible, be located within roofed areas. The drainage in these covered areas will be connected to foul sewers via a petrol interceptor.	Whole Site	During construction	N/A – Not observed.
S7.6	-	Oil leakage or spillage will be contained and cleaned up immediately. Waste oil will be collected and stored for recycling or disposal.	Whole Site	During construction	N/A – Not observed.
S7.6	-	Waste streams classifiable as chemical wastes will be properly stored, collected and treated.	Whole Site	During construction	√
S7.6	-	All fuel tanks and chemical storage areas will be provided with locks and be sited on paved areas.	Whole Site	During construction	√

EIA Ref.	EM&A Ref.	Recommended Mitigation Measures	Location	When to Implement the Measure	Status
S7.6	-	The storage areas will be surrounded by bunds with a capacity equal to 110% of the storage capacity of the largest tank to prevent spilled oil, fuel and chemicals from reaching the receiving waters.	Whole Site	During construction	√
S7.6	-	The Contractors will prepare guidelines and procedures for immediate clean-up actions following any spillages of oil, fuel or chemicals.	Whole Site	During construction	√
S7.6	-	Surface runoff from bunded areas will pass through oil/grease traps prior to discharge to the stormwater system	Whole Site	During construction	N/A – Not observed.
S7.6	-	The stormwater discharge from the site will be monitored as part of the routine monitoring under the WPCO licence, if applicable.	Whole Site	During construction	N/A – Not observed.
S7.6	-	The existing toilet facilities of the CPS will be available to the construction workforce. The sewage will be discharged to the public sewer.	Whole Site	During construction	√
S7.8	S5.2	Monthly site audits of the works areas will be carried out during the construction phase to monitor the environmental performance of the Project and to enable prompt actions to rectify any malpractice which may give rise to water pollution problem.	Whole Site	During construction	√
<i>Waste Management</i>					
S8.5	S6.3.1 & Table 6.1	<u>General</u> The Contractor shall apply for and obtain all the necessary waste disposal permits or licences are obtained prior to the commencement of the construction works.	Whole Site	During construction	√
S8.5	-	<u>Management of Waste Disposal</u> The construction contractor will open a billing account with the EPD. Every construction waste or public fill load to be transferred to the Government waste disposal facilities such as public fill reception facilities, sorting facilities, landfills will require a valid “chit” which contains the information of the account holder to facilitate waste transaction recording and billing to the waste producer.	Whole Site	During construction	√
S8.5	S6.2	A trip-ticket system will also be established to monitor the disposal of construction waste at landfill and to control fly-tipping. The trip-ticket	Whole Site	During construction	√

EIA Ref.	EM&A Ref.	Recommended Mitigation Measures	Location	When to Implement the Measure	Status
		system will be included as one of the contractual requirements and implemented by the contractor.			
S8.5	S6 & Table 6.1	A recording system for the amount of wastes generated /recycled and disposed of will be established during the construction phase.	Whole Site	During construction	√
S8.5	S6.3	<u>Reduction of Construction Waste Generation</u> C&D material will be segregated on-site into public fill and construction waste and stored in different containers or skips to facilitate reuse of the public fill and proper disposal of the construction waste. Specific areas of the work site will be designated for such segregation and storage if immediate use is not practicable.	Whole Site	During construction	√
S8.5	S6	<u>Chemical Waste</u> The contractor will register as a chemical waste producer with the EPD.	Whole Site	During construction and operation	√
S8.5	S6	Containers used for storage of chemical waste shall: <ul style="list-style-type: none"> • Be suitable for the substance they are holding, resistant to corrosion, maintained in a good condition, and securely closed; • Have a capacity of less than 450 L unless the specifications have been approved by the EPD; and • Display a label in English and Chinese in accordance with instructions prescribed in <i>Schedule 2 of the Regulations</i>. 	Whole Site	During construction and operation	√
S8.5	S6	Storage areas for chemical waste shall: <ul style="list-style-type: none"> • Be clearly labelled and used solely for the storage of chemical waste; • Be enclosed on at least 3 sides; • Have an impermeable floor and bunding, of capacity to accommodate 110% of the volume of the largest container or 20% by volume of the chemical waste stored in that area, whichever is the greatest; • Have adequate ventilation; • Be covered to prevent rainfall entering (water collected within the bund must be tested and disposed of as chemical waste, if necessary); and 	Whole Site	During construction and operation	√

EIA Ref.	EM&A Ref.	Recommended Mitigation Measures	Location	When to Implement the Measure	Status
		<ul style="list-style-type: none"> Be arranged so that incompatible materials are appropriately separated. 			
S8.5	S6	A licensed contractor shall be employed to collect chemical waste for delivery to a licensed treatment facility.	Chemical Waste Treatment Centre at Tsing Yi	During construction and operation	√
S8.5	S6 & Table 6.1	<u>General Refuse</u> General refuse will be stored in enclosed bins separately from construction and chemical wastes. The general refuse will be delivered to the transfer station, separately from construction and chemical wastes, on a daily basis to reduce odour, pest and litter impacts.	Whole site	During construction	√
S8.5	S6	Recycling bins will be provided at strategic locations to facilitate recovery of aluminium can and waste paper from the Site. Materials recovered will be sold for recycling.	Whole site	During construction and operation	√
S8.5	S6	<u>Staff Training</u> At the commencement of the construction works, training will be provided to workers on the concepts of site cleanliness and on appropriate waste management procedures, including waste reduction, reuse and recycling.	Whole site	Commencement of construction	√
S8.7	S6.1 & 6.3	Monthly audits of the waste management practices will be carried out during the construction phases to determine if wastes are being managed in accordance with the recommended good site practices. The audits will examine all aspects of waste management including waste generation, storage, recycling, transport and disposal.	Whole site	During construction	√

Remark:

- √ Compliance of Mitigation Measures
- <> Compliance of Mitigation but need improvement
- x Non-compliance of Mitigation Measures
- ▲ Non-compliance of Mitigation Measures but rectified by Gammon Construction Ltd
- △ Deficiency of Mitigation Measures but rectified by Gammon Construction Ltd
- N/A Not Applicable in Reporting Period

Annex H

Noise Monitoring Results

Annex H Noise Monitoring Results

Daytime Noise Monitoring Results

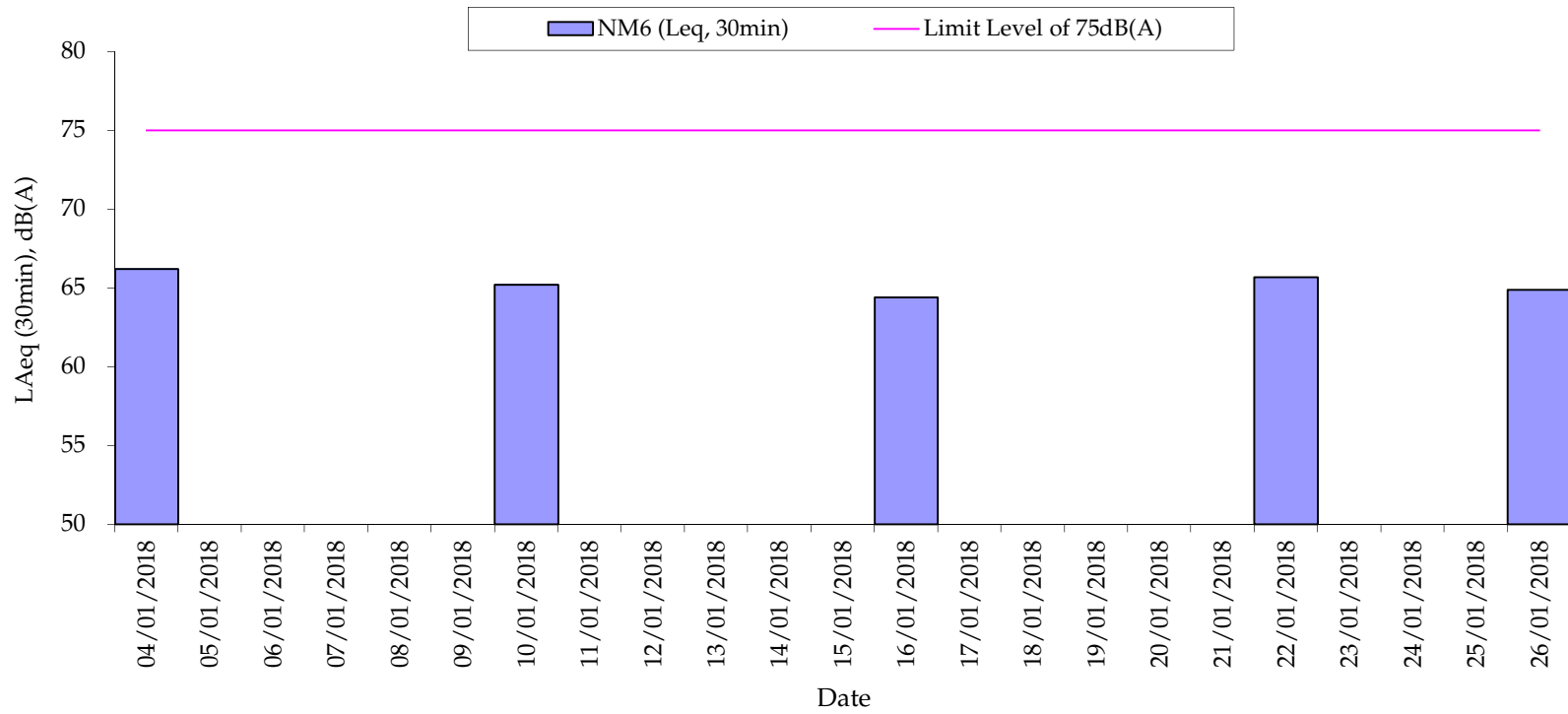
NM6 Chancery Mansion

Date	Start Time	End Time	Weather	Noise level (dB(A)), 30 min			Major Construction Noise Source(s) Observed	Other Noise Source(s) Observed	Remarks	Wind Speed (m/s)	Noise Meter Model / ID	Calibrator Model / ID
				Leq	L10	L90						
04-Jan-18	8:30	9:00	Fine	66.2	67.8	63.6	Interior fitting (within the project site)	Traffic Noise	-	0.5	CEL-633A (S/N 3521757)	CEL-120 (S/N 3421612)
10-Jan-18	9:55	10:25	Cloudy	65.2	66.9	63.1	Interior fitting (within the project site)	Traffic Noise	-	1.5	CEL-633A (S/N 3521757)	CEL-120 (S/N 3421612)
16-Jan-18	13:10	13:40	Sunny	64.4	66.1	61.8	Interior fitting (within the project site)	Traffic Noise	-	0.4	CEL-633A (S/N 3521757)	CEL-120 (S/N 3421612)
22-Jan-18	8:45	9:15	Sunny	65.7	67.4	63.0	Breaking works, Interior fitting (within the project site)	Traffic Noise	-	0.4	CEL-633A (S/N 3521757)	CEL-120 (S/N 3421612)
26-Jan-18	9:42	10:12	Sunny	64.9	66.7	62.7	Interior fitting (within the project site)	Traffic Noise	-	0.6	CEL-633A (S/N 3521757)	CEL-120 (S/N 3421612)
				Min.	64.4							
				Max.	66.2							

NM2 Ho Fook Building

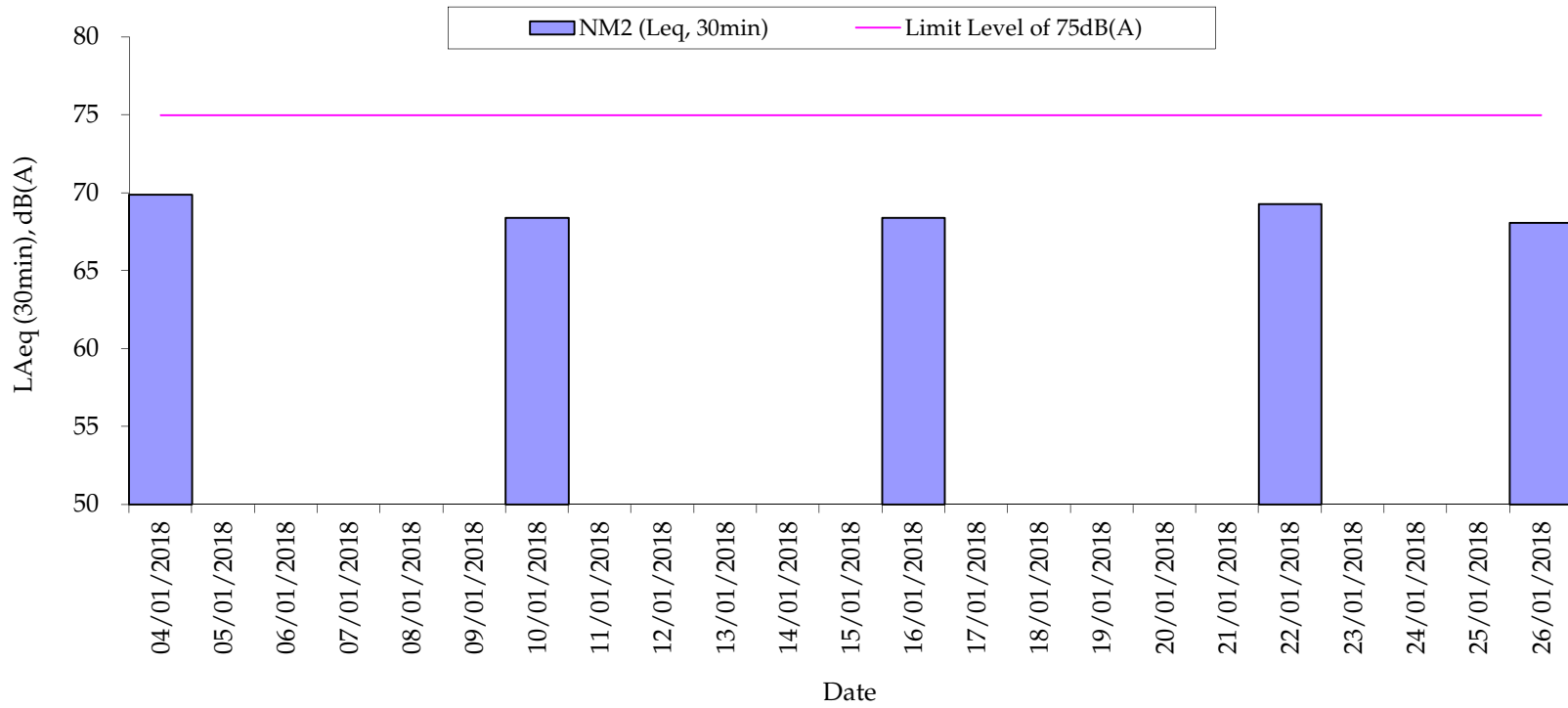
Date	Start Time	End Time	Weather	Noise level (dB(A)), 30 min			Major Construction Noise Source(s) Observed	Other Noise Source(s) Observed	Remarks	Wind Speed (m/s)	Noise Meter Model / ID	Calibrator Model / ID
				Leq	L10	L90						
04-Jan-18	10:25	10:55	Fine	69.9	72.3	66.1	Interior fitting (within the project site)	Traffic noise	-	0.5	CEL-633A (S/N 3521757)	CEL-120 (S/N 3421612)
10-Jan-18	10:34	11:04	Cloudy	68.4	71.1	64.5	Interior fitting (within the project site)	Traffic Noise	-	1.5	CEL-633A (S/N 3521757)	CEL-120 (S/N 3421612)
16-Jan-18	13:50	14:20	Sunny	68.4	71.1	64.0	Interior fitting (within the project site)	Traffic Noise	-	0.5	CEL-633A (S/N 3521757)	CEL-120 (S/N 3421612)
22-Jan-18	9:24	9:54	Sunny	69.3	71.7	64.8	Interior fitting (within the project site)	Traffic Noise	-	0.5	CEL-633A (S/N 3521757)	CEL-120 (S/N 3421612)
26-Jan-18	10:22	10:52	Sunny	68.1	70.8	64.8	Interior fitting (within the project site)	Traffic Noise	-	1.0	CEL-633A (S/N 3521757)	CEL-120 (S/N 3421612)
				Min.	68.1							
				Max.	69.9							

Normal Weekdays Noise Monitoring Results at NM6 - Chancery Mansion (Leq, 30min)



Remark:
- 75dB(A) was adopted as the Limit Level during normal weekdays in the reporting period

Normal Weekdays Noise Monitoring Results at NM2 - Ho Fook Building (Leq, 30min)

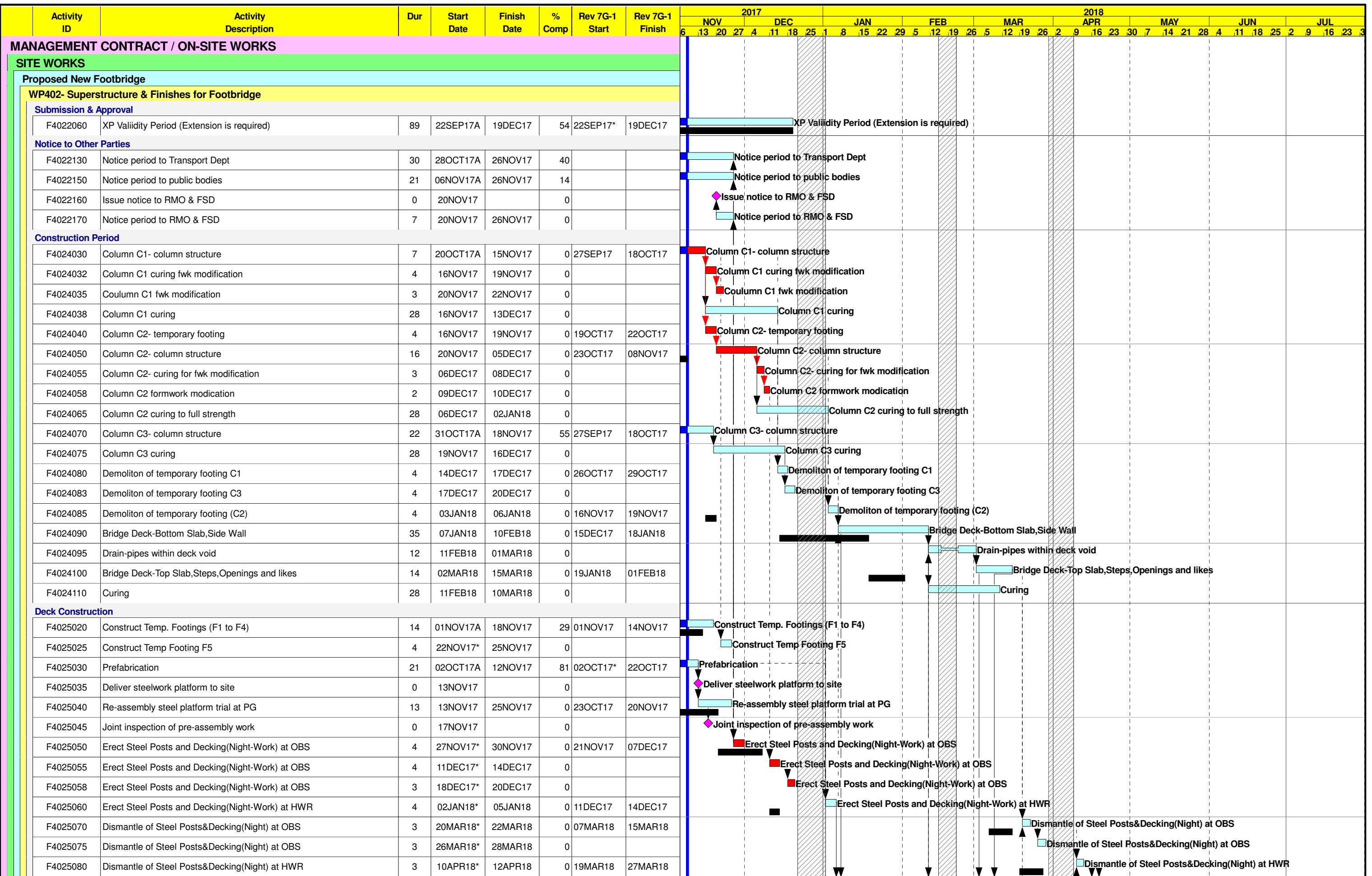


Remark:

- 75dB(A) was adopted as the Limit Level during normal weekdays in the reporting period

Annex I

Construction Programme for the Project



Start Date 01JUL11
 Finish Date 29JUN18
 Data Date 09NOV17
 Run Date 17NOV17 16:13

Early Bar
 T1 Bar
 Progress Bar
 Critical Activity

F7L1
CENTRAL POLICE STATION
REVISED TARGET CONSTRUCTION PROGRAMME FOR
FOOTBRIDGE
 (WITH PROGRESS AS OF 09 NOV 2017)
 (WITH OBJECTION FROM PUBLIC)

Sheet 1 of 2



Date	Revision	Checked	Approved
25MAR14	assume no objection from public		
28APR14	amend to account for public objections to Gazet		
22FEB16	programme reviewed		
23FEB16	revised to include comments		
14NOV16	revised to cater for Zone B planning		
17NOV16	revised after meeting on 17Nov2016		
24OCT17	revised		
31OCT17	revised		

Activity ID	Activity Description	Orig Dur	Start Date	Finish Date	Rev.7G-1 Start	Rev.7G-1 Finish	2017						2018											
							SEP	OCT	NOV	DEC	JAN	FEB	MAR	APR	MAY	JUN								
CENTRAL POLICE STATION																								
BLOCK 1 - POLICE HEADQUARTERS																								
SB01-0020	BLOCK 1 - FINISHES & E/M INCL TEMP SITE OFFICE	549*	21JUL16A	20JAN18	21JUL16A	15JAN18																		
BLOCK 3 - BARRACK BLOCK																								
SB03-0010	BLOCK 3 - FACADE WORK & MINOR REMAIN WORKS	500*	21SEP16A	02FEB18	21SEP16A	31JAN18																		
SB03-0020	BLOCK 3 - FINISHES, E/M WORK, STRAP & STEEL COL.	463*	05DEC16A	12MAR18	05DEC16A	23FEB18																		
BLOCK 6 - DORMITORY BLOCK C																								
SB06-0020	BLOCK 6-FINISHES & E/M WORK & MISCEL REMAIN WORK	481*	09AUG16A	02DEC17	09AUG16A	02DEC17																		
BLOCK 7 - DORMITORY BLOCK D																								
SB07-0010	BLOCK 7-FINISHES & E/M WORK & MISCEL REMAIN WORK	481*	09AUG16A	02DEC17	09AUG16A	02DEC17																		
BLOCK 8 - ABLUTIONS BLOCK																								
SB08-0020	BLOCK 8 - FINISHES & E/M WORK & BALCONY COLUMNS	478*	07OCT16A	27JAN18	07OCT16A	30DEC17																		
BLOCK 9 - CENTRAL MAGISTRACY																								
SB09-0010	BLOCK 9 - FACADE WORK INCL SOUTH ELEVATION	530*	25AUG16A	05FEB18	25AUG16A	08JAN18																		
SB09-0020	BLOCK 9-COURT RM STRENGTHEN, FINISHES & E/M WORK	530*	25AUG16A	05FEB18	25AUG16A	17JAN18																		
BLOCK 10 - SUPERINTENDENTS HOUSE																								
SB10-0010	BLOCK 10 - FACADE WORK INCL BALCONY REPAIR	488*	06OCT16A	05FEB18	06OCT16A	24JAN18																		
SB10-0020	BLOCK 10 - FINISHES & E/M WORK INCL FLOOR STRAP	513*	04OCT16A	28FEB18	04OCT16A	07FEB18																		
BLOCK 11 - A HALL																								
SB11-0010	BLOCK 11 - FACADE WORK	400*	07OCT16A	10NOV17	07OCT16A	13OCT17																		
SB11-0020	BLOCK 11 - FINISHES & E/M WORK	415*	24NOV16A	12JAN18	24NOV16A	13DEC17																		
BLOCK 12 - B HALL																								
SB12-0010	BLOCK 12 - FACADE WORK	489*	14JUL16A	14NOV17	14JUL16A	06NOV17																		
SB12-0020	BLOCK 12 -FINISHES & E/M WORK & METAL GATE/FENCE	541*	14JUL16A	05JAN18	14JUL16A	30DEC17																		
BLOCK 13 - C HALL																								
SB13-0010	BLOCK 13 - FACADE WORK INCL CANOPY REMOVAL	418*	06OCT16A	27NOV17	06OCT16A	09NOV17																		
SB13-0020	BLOCK 13 - FINISHES & E/M WORK	440*	06OCT16A	19DEC17	06OCT16A	19DEC17																		
BLOCK 14 - D HALL																								
SB14-0010	BLOCK 14 - FACADE WORK	435*	21SEP16A	29NOV17	21SEP16A	17OCT17																		
SB14-0020	BLOCK 14 - FINISHES & E/M WORK INC CROSS BRACING	499*	21SEP16A	01FEB18	21SEP16A	23JAN18																		
BLOCK 15 - E HALL																								
SB15-0020	BLOCK 15 - FINISHES & E/M WORK	545*	04JUL16A	30DEC17	04JUL16A	02JAN18																		
BLOCK 17 - F HALL																								
SB17-0010	BLOCK 17 - FACADE WORK INC EXT WINDOW TOP RAIL	490*	21JUL16A	22NOV17	21JUL16A	21OCT17																		
SB17-0020	BLOCK 17 - FINISHES & E/M WORK	514*	21JUL16A	16DEC17	21JUL16A	16DEC17																		
BLOCK 19 - BAUHINIA HOUSE																								
SB19-0010	BLOCK 19 - FINISHES & E/M WORK	384*	11NOV16A	29NOV17	11NOV16A	29NOV17																		
BLOCK 50 OLD BAILEY WING																								
SB50-0010	OBW FINISHES & E/M WORK INC R54	589*	20JUN16A	29JAN18	20JUN16A	15JAN18																		
BLOCK 51 ARBUTHNOT WING																								
SB51-0010	AW - FINISHES & E/M WORK	564*	20JUN16A	04JAN18	20JUN16A	30DEC17																		
EXTERNAL WORKS																								
SBEW-0020	EXTERNAL WORK (EXCL BLK 4 PROTECTIVE PLATFORM)	582*	04JUL16A	05FEB18	04JUL16A	31JAN18																		

Start Date	07JUL10
Finish Date	23APR19
Data Date	09NOV17
Run Date	18NOV17 08:41

	Early Bar
	Rev.7G-1 Bar
	Progress Bar

7L1D

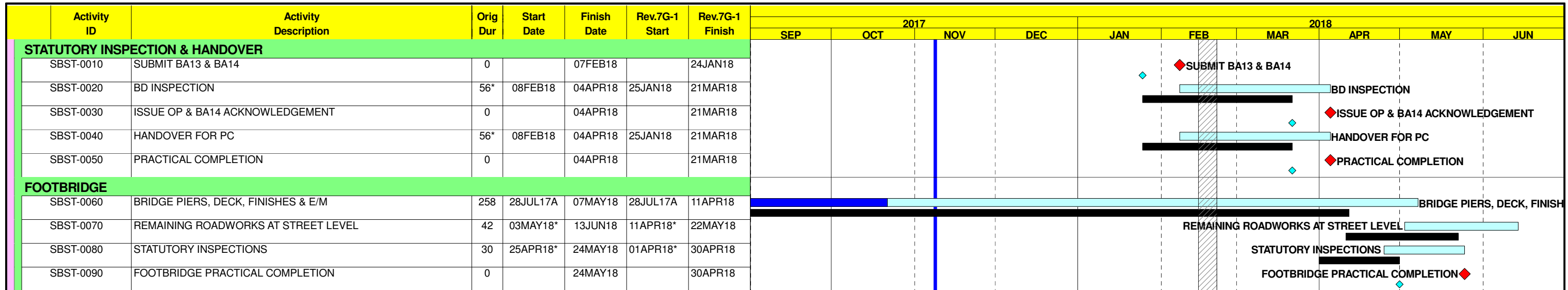
**CENTRAL POLICE STATION
CONSERVATION AND REVITALIZATION**

Sheet 1 of 2

**SUMMARY PROGRAMME TO COMPLETION (REV 7G-1)
(EXCL BLOCK 4)
(WITH PROGRESS AS OF 09 NOV 2017)**



GCL/PJ3416/SUM/CP07G-1			
Date	Revision	Checked	Approved



Start Date 07JUL10
 Finish Date 23APR19
 Data Date 09NOV17
 Run Date 18NOV17 08:41



7L1D

**CENTRAL POLICE STATION
 CONSERVATION AND REVITALIZATION**

**SUMMARY PROGRAMME TO COMPLETION (REV 7G-1)
 (EXCL BLOCK 4)
 (WITH PROGRESS AS OF 09 NOV 2017)**



GCL/PJ3416/SUM/CP07G-1			
Date	Revision	Checked	Approved

Annex J

Tree Inspection Reports



欣榮 (香港) 環境管理有限公司

Yan Wing (Hong Kong) Environment Management Limited

香港 新界 沙頭角 新樓街 15 號 二樓
No. 15, San Lau Street, 1/F., Sha Tau Kok, N.T., Hong Kong

RECEIVED

08 FEB 2018

Tel : 9776 1987, 2486 2317 Fax : 2482 4667 E-mail : yanwinghk@netvigator.com

Our Ref. : YW/TP/GAMMON/2018/1/1

30th Jan. 2018

Gammon Construction Limited
28/F Devon House,
TaiKoo Place 979 King's Road
Hong Kong
Attn : Mr. Cliff C.H. LEUNG, Ms. Oley C.T. WONG

Tel. 2516 8823
Fax.2516 6260

Dear Madam/Sir,

**Summary of Monthly Inspection Report for the Six Existing Trees
at Central Police Station Compound for Jan. 2018
(Contract Ref. : J3416/400.4/D00025)**

Tree No.	Botanical Name	Date of Inspection	Overall Health Condition Good/Fair/Poor	Comments and Recommendations
Tree-5	<i>Mangifera indica</i> 芒果	10.1.2018	Good	1. No further action is required.
Tree-6	<i>Aleurites moluccana</i> 石栗	10.1.2018	Fair	1. Leaves on the crown are rather sparse. 2. Keep close monitoring on the growth of the tree.
Tree-7	<i>Aleurites moluccana</i> 石栗	10.1.2018	Fair	1. Leaves on the crown are rather sparse. 2. Keep close monitoring on the growth of the tree.
Tree-8	<i>Plumeria rubra</i> 紅雞蛋花	10.1.2018	Good	1. No further action is required.
Tree-9	<i>Araucaria cunninghamia</i> 花旗杉	10.1.2018	Good	1. No further action is required.

Tree-11	<i>Dracaena marginata</i> 馬尾鐵	10.1.2018	Fair	<ol style="list-style-type: none">1. Withered leaves still appear on the tree.2. Keep monitoring on the growth of the tree especially during the nearby renovation works are in progress.
---------	----------------------------------	-----------	------	--

Tree Inspection Reports and Tree Group Inspection Form (Form 1) are attached for your reference and record, please.

I should be much grateful if you could endorse the attached Invoice (No.1136) and fax it to my office at 2482 4667 Thank you.

Yours faithfully

For and on behalf of
Yan Wing (HK) Environment Management Ltd.



(WONG Pak Hay)
Contract Manager



FORM 1: TREE GROUP INSPECTION FORM

表格 1: 樹群檢查表格

General Information 基本資料

Company 公司:	Gammon Construction Ltd	Name of Tree Inspection officer 巡查人員姓名:	LAU Man Chung
File Ref. 檔案編號:	YW/TP/GAMMON/2018/1/2	Name of Endorsement Officer 覆核人員姓名:	WONG Pak Hay
Date of Inspection 巡查日期:	January 10, 2018		
Project/Contract No. 合約/工程編號:	J3416/400.4/D00025		

Location Information 位置資料

Location 地點:	Central Police Station Compound	Nearby Utility Post No. 就近公用設施編號:	
Location Types 地點類別: Address: _____ (multiple answers allowed) 可選多於一項	<input type="checkbox"/> Roadside 路旁 <input checked="" type="checkbox"/> Open space 空地 <input type="checkbox"/> Exhibition Centre 展覽中心 <input type="checkbox"/> View Point 觀景台 <input type="checkbox"/> Walking / nature trail 行山徑 / 自然徑 <input type="checkbox"/> Others (please specify) 其他 (請說明): _____	<input type="checkbox"/> Community Hall / Centre 社區會堂 / 中心 <input type="checkbox"/> Roadside Planter 路旁花園 <input type="checkbox"/> Rain shelter / pavilion 避雨亭 / 涼亭 <input type="checkbox"/> Sitting out area 休憩處	

General Tree Information 基本樹木資料

* Delete as appropriate 請把不合適的刪除

Main tree species in the group or minority tree species of significant size 在群組內的主要樹種或樹幹胸徑或高度或樹冠範圍較大的樹種 (Note 2)	Approx. number of trees in the relevant species or as a % of tree group 該樹種在群組內的百分比/數目*	Range of tree height (m) 該樹種高度範圍	Overall health condition 整體健康狀況 (good, fair, poor 好, 良, 差)	Overall structural condition 整體結構狀況 (good, fair, poor 好, 良, 差)	Other remarks (Any special tree condition, e.g. dying/dead, pest/disease problem and structural defects; and soil condition 其他評語 (樹木狀況例如: 凋謝/枯樹/病蟲害或結構問題; 及泥土狀況)
<i>Mangifera indica</i> 芒果	17%, 1 No.	16M	GOOD	GOOD	N.F.A.
<i>Aleurites moluccana</i> 石栗	32% 2 Nos.	10-13M	FAIR	FAIR	1. Leaves on the crown are rather sparse. 2. Keep close monitoring on the growth of the two trees.
<i>Plumeria rubra</i> 紅雞蛋花	17% 1 No.	7M	GOOD	GOOD	N.F.A.
<i>Araucaria cunninghamia</i> 花旗杉	17% 1 No.	13M	GOOD	GOOD	N.F.A.
<i>Dracaena marginata</i> 馬尾鐵	17% 1 No.	8M	FAIR	FAIR	Keep close monitoring on the growth of the tree.

Target 目標

TARGET (people or property potentially affected by tree/branch failure) 目標 (因樹木倒塌或枝條斷裂而受影響的人或財產)
Does target exist? 目標是否存在? <input checked="" type="checkbox"/> Yes 是 <input type="checkbox"/> No 否
Can target be moved? 能否移除目標? <input type="checkbox"/> Yes 是 <input checked="" type="checkbox"/> No 否
Can the use of site be restricted? 可否限制場地的使用? <input checked="" type="checkbox"/> Yes 是 <input type="checkbox"/> No 否
Frequency of use of location 使用該地點的頻密程度: <input type="checkbox"/> Occasional use 偶爾使用 <input type="checkbox"/> Intermittent use 間歇使用 <input checked="" type="checkbox"/> Frequent use 經常使用 <input type="checkbox"/> Constant use 恆常使用

Identification of Trees for Remedial Action or Detailed Tree Risk Assessment

識別下述樹木, 以便採取風險緩減措施或進行詳細樹木風險評估

Trees falling under the following criteria 樹木屬於以下任何一項或多於一項類別	Number of trees 樹木數量	Remedial action or detailed tree risk assessment 緩減措施或進行詳細樹木風險評估
(1) Trees on complaint list with structural or health problems 投訴個案中, 結構或健康問題的樹木 (Note 1)	NII	
(2) Mature trees belonging to species with brittle wood structure and having unsatisfactory health or structural conditions with failure potential 屬木質脆弱品種並已達成成熟期及有倒塌風險的樹木 (Note 1)	NII	
(3) Tree with major defects or health problems 有明顯缺陷或健康問題的樹木 (Note 1)	NII	
(4) Trees growing in very stressful site conditions with failure potential 生長於非常擠壓環境而有倒塌風險的樹木 (Note 1)	NII	



Signature of Tree Inspection Officer :
Signature of Endorsement Officer:

Name of Contractor

Date:



Yan Wing (HK) Environment Management Ltd.

30-1-2018



- Note 1: If remedial action (such as pruning) undertaken cannot mitigate the potential risk of tree or branch failure, detailed tree risk assessment (using Form 2) should be carried out.
備註 1: 若風險緩減措施(如枝幹修剪)仍未能解決倒塌或枝條斷裂的潛在風險，應該該樹進行詳細的樹木風險評估(表格 2)。
- Note 2: Please read in conjunction with TMO's Guidelines on Tree Risk Assessment and Management Arrangement (Para. 4.3, refers.)
備註 2: 請參閱樹木管理辦事處的樹木風險評估安排及管理指引(第 4.3 節)

**Inspection Report for the 6 Existing Trees
at Central Police Station Compound
(Contract Ref. : J3416/400.4/D00025)**

I. TREE NUMBER : Tree-5 *Mangifera indica* 芒果

II. BASIC INFORMATION :

Height (m)	16m	Crown spread (m)	18m
DBH (mm)	1000mm	Overall Health Condition Good/Fair/Poor	Good
Date of Inspection	10 th January 2018	Last Inspection Date	1 st December 2017

III. COMMENTS :

1. Overall health condition of the tree is good.
2. The crown is full of vigorous and green leaves.
3. Many young and green leaves appear on the branches.
4. Flowers are growing on the tree.
5. Some mango fruits also appear on the tree.

IV. RECOMMENDATIONS :

1. No further action is required.

V. PHOTO RECORD :



Fig 2. The root collar is normal. The planter is covered with small pieces of pine bark.



Fig. 3 Health condition of the lower trunk is fair.



Fig. 4 Health condition of the mid trunk is fair.



Fig. 5 Health condition of the upper trunk also is fair.



Fig. 6 The crown is full of vigorous and green leaves.



Fig. 7 Vigorous and green leaves also are growing on the lower branches.



Fig. 8 Many young and green leaves appear on the tree.



Fig. 9 Flowers also appear on Tree-5.



Fig. 10 Several mango fruits are found hanging on the tree.



Fig. 11 The site near the planter is clean and tidy.



Fig. 12 Overall view of Tree-5 during inspection on 10th January 2018.



Signature of Inspection Officer :
(Mr. LAU Man-chung, ISA CA-HK0050A)

Signature of Endorsement Officer :
(Mr. WONG Pak-hay, Contract Manager)

Name of Contractor :

Yan Wing (HK) Environment
Management Ltd.

Dated this :

15th January 2018



**Inspection Report for the 6 Existing Trees
at Central Police Station Compound
(Contract Ref. : J3416/400.4/D00025)**

I. TREE NUMBER : Tree-6 *Aleurites moluccana* 石栗

II. BASIC INFORMATION :

Height (m)	10m	Crown spread (m)	10m
DBH (mm)	510mm	Overall Health Condition Good/Fair/Poor	Fair
Date of Inspection	10 th January 2018	Last Inspection Date	1 st December 2017

III. COMMENTS :

1. Overall health condition of the tree is fair.
2. Leaves on the crown are rather sparse.
3. Leaves on the lower branches are normal.
4. As dry season has come, some leaves on the tree become faded.
5. The site near Tree-6 seems to be re-constructed.

IV. RECOMMENDATIONS :

1. Keep close monitoring on the growth of the tree.

V. PHOTO RECORD :



Fig 2. Root collar is normal. The planter is covered with mulch and some hessian clothes.



Fig 3. Health condition of the lower trunk is fair.



Fig. 4 Health condition of the mid trunk is fair.



Fig. 5 Health condition of the upper trunk also is fair.



Fig. 6 Leaves on the crown are rather sparse.



Fig. 7 Leaves on the lower branches are normal.



Fig. 8 Some young and green leaves appear on the tree.



Fig. 9 As dry season has come, some leaves on the tree become faded.



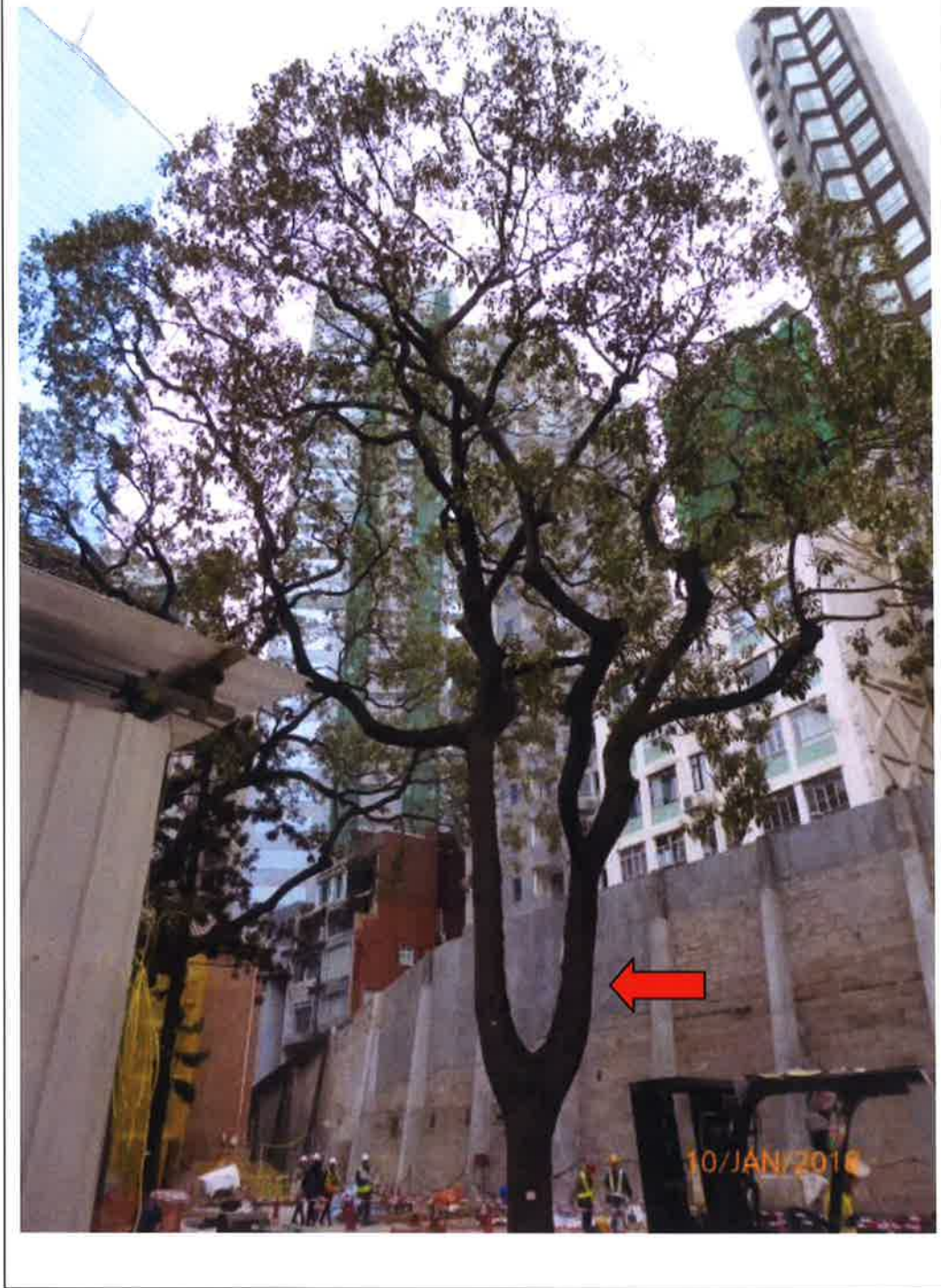
Fig. 10 The tree protection zone is in good order.



Fig. 11 The site near Tree-6 seems to be re-constructed.



Fig. 12 Overall view of Tree-6 during inspection on 10th January 2018.



Signature of Inspection Officer :
(Mr. LAU Man-chung, ISA CA-HK0050A)

Signature of Endorsement Officer :
(Mr. WONG Pak-hay, Contract Manager)

Name of Contractor :

Yan Wing (HK) Environment
Management Ltd.

Dated this :

15th January 2018



(Handwritten signature)
(Handwritten signature)
(Handwritten signature)
7

**Inspection Report for the 6 Existing Trees
at Central Police Station Compound
(Contract Ref. : J3416/400.4/D00025)**

I. TREE NUMBER : Tree-7 *Aleurites moluccana* 石栗

II. BASIC INFORMATION :

Height (m)	13m	Crown spread (m)	12m
DBH (mm)	650mm	Overall Health Condition Good/Fair/Poor	Fair
Date of Inspection	10 th January 2018	Last Inspection Date	1 st December 2017

III. COMMENTS :

1. Overall health condition of the tree is fair.
2. Leaves on the crown are rather sparse.
3. Leaves on the lower branches are normal.
4. Some young and green leaves appear on the tree.
5. The site near Tree-7 seems to be re-constructed.

IV. RECOMMENDATIONS :

1. Keep close monitoring on the growth of the tree.

V. PHOTO RECORD :



Fig. 2 Root collar is normal. The planter is covered with wet hessian clothes.



Fig 3. Health condition of the lower trunk is fair.



Fig. 4 Health condition of the mid trunk also is fair.



Fig. 5 Leaves on the crown are rather sparse.



Fig. 6 Leaves on the lower branches are normal.



Fig. 7 Some young and green leaves appear on the tree.



Fig. 8 As dry season has come, some leaves on the tree become faded.



Fig. 9 The tree protection zone is in good order.



Fig. 10 The bare roots at the pits have been wrapped with hessian clothes.



Fig. 11 The site near Tree-7 seems to be re-constructed.



Fig. 12 Overall view of Tree-7 during inspection on 10th January 2018.



Signature of Inspection Officer :
(Mr. Lau Man-chung, ISA CA-HK0045A)

Signature of Endorsement Officer :
(Mr. WONG Pak-hay, Contract Manager)

Name of Contractor :

Dated this :



Yan Wing (HK) Environment
Management Ltd.

15th January 2018



**Inspection Report for the 6 Existing Trees
at Central Police Station Compound
(Contract Ref. : J3416/400.4/D00025)**

I. TREE NUMBER : Tree-8 *Plumeria rubra* 紅雞蛋花

II. BASIC INFORMATION :

Height (m)	7m	Crown spread (m)	9m
DBH (mm)	430mm	Overall Health Condition Good/Fair/Poor	Good
Date of Inspection	10 th January 2018	Last Inspection Date	1 st December 2017

III. COMMENTS :

1. Overall health condition of the tree is good.
2. As dry season has come, leaves on the tree become sparse.
3. Tree protection zone is in good order.
4. The site near Tree-8 seems to be re-constructed.

IV. RECOMMENDATIONS :

1. No further action is required.

V. PHOTO RECORD :



Fig. 2 Root collar is normal. The planter is covered with mulch and dry leaves.



Fig. 3 Health condition of the lower trunk is fair.



Fig. 4 Health condition of the mid trunk is fair.



Fig. 5 Health condition of the upper trunk also is fair.



Fig. 6 As dry season has come, leaves on the tree become sparse.



Fig. 7 Some leaves still remain on the lower branches.



Fig. 8 Some leaves on the crown become faded.



Fig. 9 The tree protection zone is in good order.



Fig. 10 The site near the planter seems to be re-constructed.



Fig. 11 Many construction equipment are placed near Tree-8.



Fig. 12 Overall view of Tree-8 during inspection on 10th January 2018.



Signature of Inspection Officer :
(Mr. LAU Man-chung, ISA CA-HK0050A)

Signature of Endorsement Officer :
(Mr. WONG Pak-hay, Contract Manager)

Name of Contractor :

Dated this :

Yan Wing (HK) Environment
Management Ltd.

15th January 2018



**Inspection Report for the 6 Existing Trees
at Central Police Station Compound
(Contract Ref. : J3416/400.4/D00025)**

I. TREE NUMBER : Tree - 9 *Araucaria cunninghamia* 花旗杉

II. BASIC INFORMATION :

Height (m)	13m	Crown spread (m)	5m
DBH (mm)	230mm	Overall Health Condition Good/Fair/Poor	Good
Date of Inspection	10 th January 2018	Last Inspection Date	1 st December 2017

III. COMMENTS :

1. Overall health condition of the tree is good.
2. The crown is full of vigorous and green leaves.
3. Some young and green leaves appear on the tree.
4. The site near Tree-9 appears clean and tidy.

IV. RECOMMENDATIONS :

1. No further action is required.

V. PHOTO RECORD :



Fig. 2 Root collar is normal. The planter is covered with mulch and dry leaves.



Fig. 3 Health condition of the lower trunk is fair.



Fig. 4 Health condition of the mid trunk is fair.



Fig. 5 Health condition of the upper trunk also is fair.



Fig. 6 The crown is full of vigorous and green leaves.



Fig. 7 Vigorous and green leaves also are growing on the lower branches.



Fig. 8 Some young and green leaves appear on the mid trunk.



Fig. 9 Young and green leaves also appear on the lower branches.



Fig. 10 The tree protection zone is in good order.



Fig. 11 The site near Tree-9 is clean and tidy.



Fig. 12 Overall view of Tree-9 during inspection on 10th January 2018.



Signature of Inspection Officer :
(Mr. LAU Man-chung, ISA CA-HK0050A)

Signature of Endorsement Officer :
(Mr. WONG Pak-hay, Contract Manager)

Name of Contractor :

Dated this :





Yan Wing (HK) Environment
Management Ltd.

15th January 2018



**Inspection Report for the 6 Existing Trees
at Central Police Station Compound
(Contract Ref. : J3416/400.4/D00025)**

I. TREE NUMBER : Tree -11 *Dracaena marginata* 馬尾鐵

II. BASIC INFORMATION :

Height (m)	8m	Crown spread (m)	2m
DBH (mm)	170mm	Overall Health Condition Good/Fair/Poor	Fair
Date of Inspection	10 th January 2018	Last Inspection Date	1 st December 2017

III. COMMENTS :

1. Health condition of the tree is fair.
2. Withered leaves still appear on the tree.
3. **A few construction debris remained at the planter.**
4. Two large working platforms have been set up close to Tree-11 for renovation works.

IV. RECOMMENDATIONS

1. **Remove the construction debris away from the planter.**
2. **Keep close monitoring on the growth of the tree especially during the nearby renovation works are in progress.**

V. PHOTO RECORD :

Fig 1. Tree number



Fig. 2 Root collar is normal. A few construction debris remain at the planter.



Fig. 3 Health condition of the lower trunk is fair.



Fig. 4 Health condition of the mid trunk is fair.



Fig. 5 Health condition of the upper trunk also is fair.



Fig. 6 Some leaves on the bottom part of Tree-11 are covered with cement.



Fig. 7 Withered leaves still appear on the lower branches.



Fig. 8 Withered leaves also appear on the upper branches.



Fig. 9 A large working platform has been set up close to Tree-11.

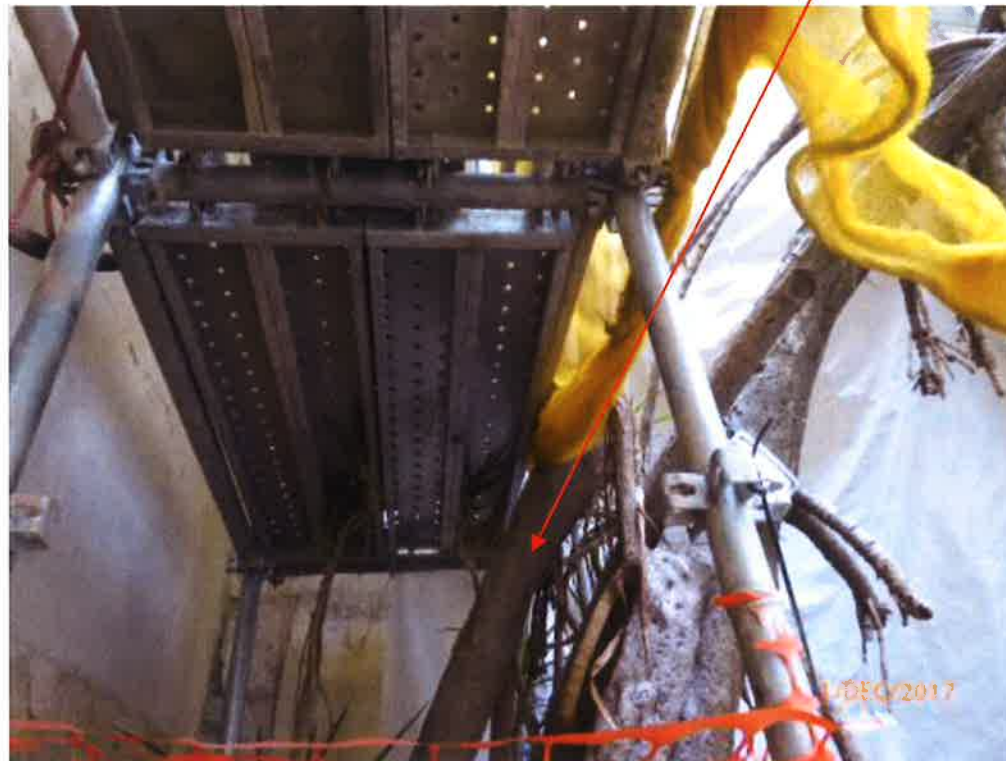


Fig. 10 Another large working platform also set up close to Tree-11 for renovation works.



Fig. 11 The tree protection zone is in order.



Fig. 12 Overall view of Tree-11 during inspection on 10th January 2018.



Signature of Inspection Officer :
(Mr. LAU Man-chung, ISA CA-HK0050A)

Signature of Endorsement Officer :
(Mr. WONG Pak-hay, Contract Manager)

Name of Contractor :

Dated this :

Yan Wing (HK) Environment
Management Ltd.

15th January 2018



Annex K

Environmental Complaint,
Environmental Summons
and Prosecution Log

Annex K Cumulative Complaint and Summons/Prosecutions Log

Reporting Month	Number of Complaints in Reporting Month	Number of Summons/Prosecutions in Reporting Month
November 2011	0	0
December 2011	0	0
January 2012	0	0
February 2012	0	0
March 2012	4	0
April 2012	0	0
May 2012	0	0
June 2012	2	0
July 2012	1	0
August 2012	0	0
September 2012	0	0
October 2012	0	0
November 2012	2	0
December 2012	0	0
January 2013	0	0
February 2013	1	0
March 2013	1	0
April 2013	0	0

Reporting Month	Number of Complaints in Reporting Month	Number of Summons/Prosecutions in Reporting Month
May 2013	0	0
June 2013	0	0
July 2013	0	0
August 2013	0	0
September 2013	0	0
October 2013	0	0
November 2013	0	0
December 2013	0	0
January 2014	2	0
February 2014	1	0
March 2014	1	0
April 2014	1	0
May 2014	0	0
June 2014	0	0
July 2014	2	0
August 2014	3	0
September 2014	2	0
October 2014	1	0
November 2014	0	0

Reporting Month	Number of Complaints in Reporting Month	Number of Summons/Prosecutions in Reporting Month
December 2014	0	0
January 2015	0	0
February 2015	1	0
March 2015	1	0
April 2015	0	0
May 2015	1	0
June 2015	1	0
July 2015	1	0
August 2015	1	0
September 2015	0	0
October 2015	0	0
November 2015	0	0
December 2015	0	0
January 2016	0	0
February 2016	0	0
March 2016	1	0
April 2016	0	0
May 2016	0	0
June 2016	0	0

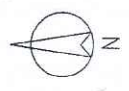
Reporting Month	Number of Complaints in Reporting Month	Number of Summons/Prosecutions in Reporting Month
July 2016	0	0
August 2016	0	0
September 2016	1	0
October 2016	0	0
November 2016	0	0
December 2016	0	0
January 2017	0	0
February 2017	0	0
March 2017	0	0
April 2017	0	0
May 2017	0	0
June 2017	0	0
July 2017	0	0
August 2017	0	0
September 2017	0	0
October 2017	0	0
November 2017	0	0
December 2017	1	0
January 2018	1	0

Reporting Month	Number of Complaints in Reporting Month	Number of Summons/Prosecutions in Reporting Month
Overall Total	34	0

Annex L

Records of Vibration
Monitoring for Other
Construction Works

Structural Additions and Alterations at Block 11



Note: This plan has been processed on a computer which uses the computerized processing system as specified in Part 14.19. The user of the software must register the user name and password as specified in the user manual and the user must ensure that the user name and password are not lost or destroyed. The user must ensure that the user name and password are not lost or destroyed.

Revision/Submission 校核/編號

No. 編號	Description 說明	Date 日期	Approved 審批
-	BD SUBMISSION (50)	12/11	JS
A	BD SUBMISSION (01)	03/12	JS
B	BD SUBMISSION (17)	03/12	JS
C	BD SUBMISSION RW BATCH 1	03/12	JS
D	FOR INFORMATION (50)	03/12	JS
E	BD SUBMISSION (51)	05/12	JS
F	BD SUBMISSION (04)	05/12	JS
G	BD SUBMISSION (14)	05/12	JS
H	BD SUBMISSION (14)	05/12	JS
J	BD SUBMISSION RW BATCH 2	05/12	JS
K	BD SUBMISSION (06&07)	07/12	JS
L	BD SUBMISSION (01)(02)	07/12	JS
M	BD SUBMISSION (11)	07/12	JS

Plan Approved
CHIONG Kam-yung Jacky
 Chief Structural Engineer
 for BUILDING AUTHORITY
 - 3 OCT 2012



BD SUBMISSION
 Drawing Status 製圖狀況

This drawing and the contents herein are the copyright of relevant consultants.
 本圖紙及其內容的版權歸有關顧問公司所有。
 No part of the drawing and the design contained herein may be reproduced without the prior written consent of relevant consultants.
 未經有關顧問公司書面同意，不得複製此圖紙內任何內容。
 Do not take measurements directly from this drawing.
 切勿直接從圖紙上量度尺寸。
 Check and verify all dimensions on site.
 所有尺寸必須在工地現場核實及量度。
 Read this drawing in conjunction with the specifications and all other related drawings.
 此圖紙必須與圖紙說明書及其他相關圖紙一併閱讀。
 Notify the relevant consultants immediately of any discrepancy found herein.
 如發現圖紙內有任何錯誤之處，應立即通知有關顧問公司。

LEGEND

	EXISTING FRESH WATER MAIN
	EXISTING SALT WATER MAIN
	EXISTING STREET LIGHTING NC. 33488-A1
	EXISTING STREET LIGHTING CABLE
	EXISTING GAS MAIN
	EXISTING HV ELECTRICITY CABLE
	EXISTING LV ELECTRICITY CABLE
	EXISTING TELECOMMUNICATION DUCT (HUTCHISON GLOBAL COMMUNICATIONS LIMITED)
	EXISTING STORMWATER DRAIN
	EXISTING FOUL SEWER
	PROPOSED FOUL SEWER
	SITE BOUNDARY
	EXISTING RETAINING WALL
	EXISTING DRILLHOLE WITH STANDPIPE/PIEZOMETER
	PROPOSED BUILDING SETTLEMENT POINTS/TILTMETER
	PROPOSED RETAINING WALL SETTLEMENT POINTS/TILTMETER
	PROPOSED INCLINOMETER TO BE BUILT IN BORED PILE WALL OR PIPE PILE WALL
	PROPOSED GROUND SETTLEMENT POINTS
	PROPOSED UTILITY MONITORING POINTS
	PROPOSED VIBRATION MONITORING POINTS
	PROPOSED ADDITIONAL DRILLHOLE

Client 業主

 The Jersey Club CP Limited

Design Consultant
HERZOG & DEMEUREN

Conservation Architect

 Rocco

Executive Architect / AP

 ARUP

Structural Engineer / RSE
 E & M Engineer

 JRP

Project 項目
**CENTRAL POLICE STATION
 CONSERVATION AND REVITALISATION
 PROJECT**

Drawing Table 圖名
MONITORING LAYOUT PLAN

Scale 比例
 1:300 @ A1

Drawn 繪圖
 K.C. Lai

Checked 校對
 AL

Drawing No. 圖號
 00-OAP209674-G-001

Revision 校核
 M

Cost file 00-OAP209674-G-001.dwg

Vibration Monitoring Record (January)

	Block 11	
Point	VM11-1	VM11-2
Date	mm/s	mm/s
1-Jan-2018		
2-Jan-2018	0.107	0.108
3-Jan-2018	0.114	0.105
4-Jan-2018	0.105	0.104
5-Jan-2018	0.102	0.116
6-Jan-2018	0.109	0.104
7-Jan-2018		
8-Jan-2018	0.105	0.102
9-Jan-2018	0.119	0.105
10-Jan-2018	0.107	0.103
11-Jan-2018	0.103	0.110
12-Jan-2018	0.116	0.102
13-Jan-2018	0.104	0.107
14-Jan-2018		
15-Jan-2018	0.106	0.106
16-Jan-2018	0.109	0.103
17-Jan-2018	0.106	0.106
18-Jan-2018	0.123	0.102
19-Jan-2018	0.105	0.106
20-Jan-2018	0.104	0.103
21-Jan-2018		
22-Jan-2018	0.112	0.104
23-Jan-2018	0.107	0.107
24-Jan-2018	0.104	0.103
25-Jan-2018	0.109	0.108
26-Jan-2018	0.102	0.102
27-Jan-2018	0.108	0.102
28-Jan-2018		
29-Jan-2018	0.102	0.105
30-Jan-2018	0.104	0.103
31-Jan-2018	0.109	0.105